



4th Annual AMTA Conference



# MUSIC Therapy on My Mind



Sessions October 31 - November 3, 2002

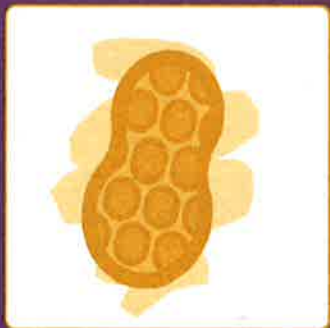
Meetings October 29 - November 3, 2002

Institutes - October 30, 2002

CMTEs October 31 - November 3, 2002

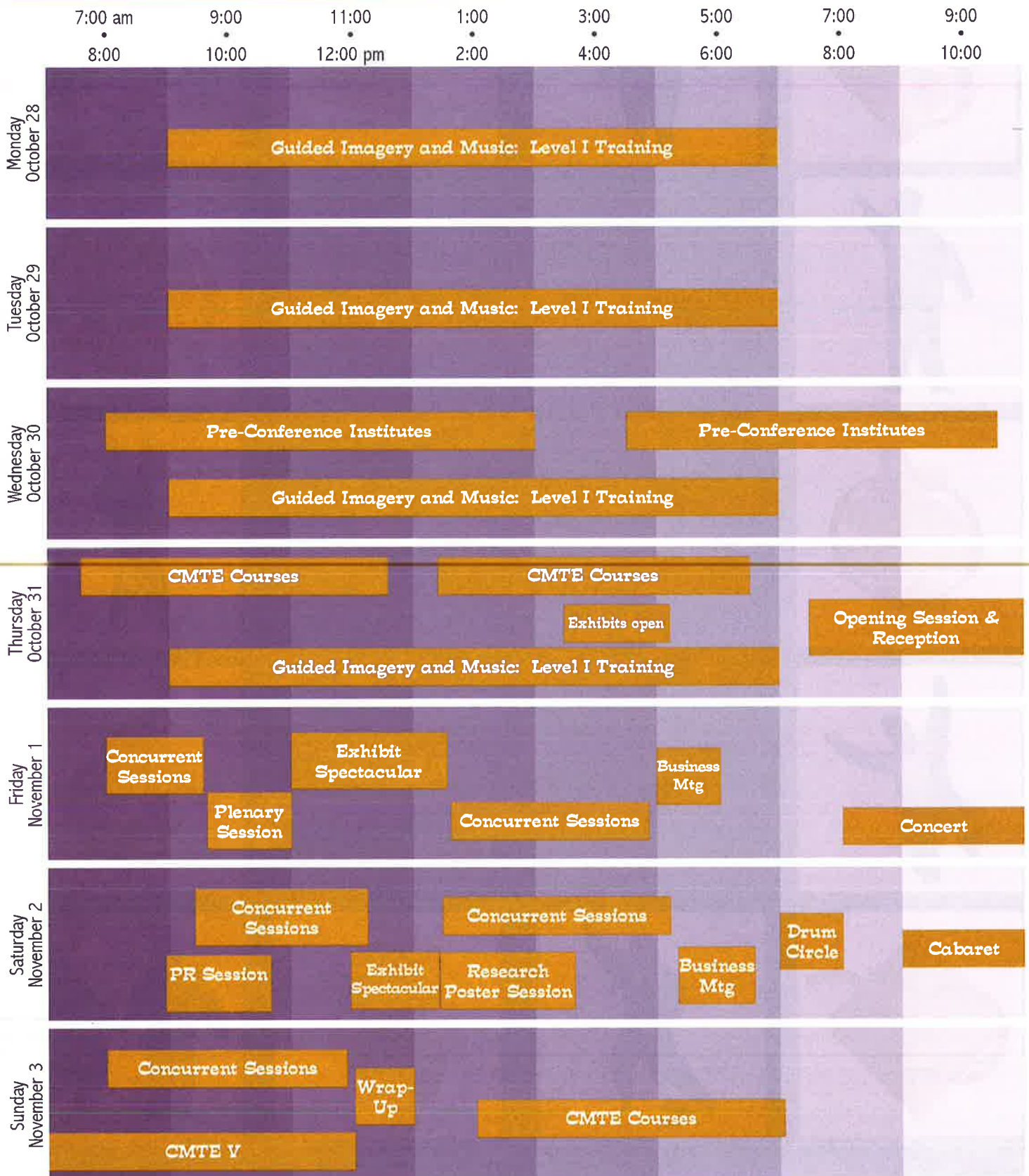


## Atlanta, Georgia



# American Music Therapy Association

# CONFERENCE AT A GLANCE





# Music Therapy on My Mind



## **AMTA 4th Annual Conference**

---

### **Atlanta, Georgia**

**Sessions October 31 - November 3, 2002**  
**Meetings October 29 - November 3, 2002**  
**Institutes - October 30, 2002**  
**CMTEs October 31 - November 3, 2002**





# TABLE OF CONTENTS

<b>Welcomes</b> .....	<b>5</b>
President of the United States .....	5
Governor of Georgia .....	6
Mayor of Atlanta .....	7
The Recording Academy .....	8
Conference Chair .....	9
AMTA President .....	10
Local Arrangements Committee .....	10
<b>General Information</b> .....	<b>11</b>
<b>Grand Opening Night</b> .....	<b>13</b>
<b>Lifetime Achievement Honorees</b> .....	<b>15</b>
<b>An Evening With Maureen McGovern</b> .....	<b>16</b>
<b>Special Events</b> .....	<b>17</b>
Drum Circle .....	17
Entertainment Breaks .....	17
Cabaret .....	17
International Relations Networking Breakfast .....	18
Networking Breakfasts .....	18
Special Target Populations Networking Session .....	19
Music Therapy Responding to Disaster and Trauma: Special Conference Track .....	19
Reimbursement Plenary Session .....	20
Jam Rooms .....	21
Public Relations Session .....	21
Research Poster Session .....	22
<b>Guided Imagery in Music Training</b> .....	<b>24</b>
<b>Pre-Conference Institutes</b> .....	<b>25</b>
Innovative Business Strategies in the Music Therapy Marketplace .....	25
When Music Therapy Meets Disaster Relief .....	25
Music Therapy in Pediatric Healthcare .....	26
Addressing Cultural Complexities in Music Therapy Practice .....	26
<b>Continuing Music Therapy Education Information</b> .....	<b>27</b>
<b>Continuing Music Therapy Education Courses</b> .....	<b>28</b>
<b>Meeting Schedule</b> .....	<b>31</b>
<b>Session Schedule</b> .....	<b>32</b>
<b>Conference Officials</b> .....	<b>56</b>
<b>Exhibit Hall</b> .....	<b>57</b>
<b>Acknowledgements</b> .....	<b>62</b>
<b>Conference Sponsors</b> .....	<b>63</b>
<b>Advertisements</b> .....	<b>64</b>

# GREETINGS FROM PRESIDENT BUSH

THE WHITE HOUSE  
WASHINGTON

September 19, 2002

I send greetings to those gathered for the 4th Annual Conference of the American Music Therapy Association (AMTA).

For more than 50 years, music therapy has helped to address the physical, psychological, cognitive, and social functions of those with disabilities and illnesses.

I commend the AMTA for working to promote public awareness and increase access to music therapy services. Your dedication to education, clinical training, advancing professional standards, and a code of ethics helps advance this important therapy and gives hope to countless people across our Nation.

Laura joins me in sending best wishes for a productive conference.



# GREETINGS FROM THE GOVERNOR

STATE OF GEORGIA  
OFFICE OF THE GOVERNOR  
ATLANTA 30334-0900

Roy E. Barnes  
GOVERNOR

October 30, 2002

It is a pleasure to extend best wishes and warmest regards on the occasion of the fourth annual conference of the American Music Therapy Association (AMTA).

As Governor, I am pleased to welcome music therapists, students, educators, administrators and other attendees from around the country and across Georgia to our capital. Atlanta is a beautiful city providing many attractions, including fine dining, historic sites and various recreational facilities. I hope you have an opportunity to enjoy some of them while you are here and experience the hospitality that is so much a part of everyday life in Atlanta.

Since 1998, AMTA has promoted the progressive development of the therapeutic use of music in rehabilitation, special education and various community settings, and its annual event is held for the purpose of conducting association business and exchanging up-to-date ideas and strategies. This year's conference, Music Therapy on My Mind, promises to be one of its best ever, with numerous exhibits, educational seminars and sessions, music and more.

I extend a warm welcome to your musical guest, Maureen McGovern and my best wishes to all for a productive, enlightening and enjoyable conference.

Sincerely,



Roy E. Barnes

REB:pm

# GREETINGS FROM THE MAYOR

CITY OF ATLANTA  
55 TRINITY AVENUE, S.W.  
ATLANTA, GEORGIA 30335-0300

SHIRLEY FRANKLIN  
MAYOR

October 30, 2002

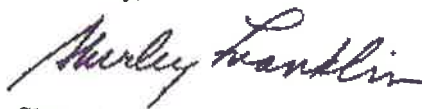
Greetings:

As Mayor of Atlanta, it gives me great pleasure to welcome the American Music Therapy Association to your 4th Annual Conference.

With its Southern charm and pleasant climate, Atlanta continues to be a great place to visit. Thanks to steady economic growth, new developments from the Centennial Olympic Games and urban revitalization, Atlanta is more beautiful and vibrant than ever before. While here, we hope that you will visit the world renowned Martin Luther King, Jr. Historic District, The Carter Presidential Center, and CNN.

On behalf of the citizens of Atlanta, I hope that you will have a most productive conference.

Sincerely,



Shirley Franklin



# GREETINGS FROM NARAS

## National Academy of Recording Arts & Sciences, Inc.

Atlanta Chapter  
999 Peachtree St., NE, Suite 110, Atlanta, GA 30309  
(404) 249-8881 Fax (404) 249-8882  
email: atlanta@grammy.com

As Executive Director of the Atlanta Chapter of The Recording Academy, it is a pleasure to welcome you to Atlanta for the 4th Annual American Music Therapy Association Conference.

Over the years, the music scene in Atlanta has continued to nurture a diverse music community. From the celebrated Atlanta Symphony Orchestra, to So So Def Records, to Gospel/Contemporary Christian artists Dottie Peoples and Third Day, to Country's finest, Travis Tritt and Mark Wills, to Rock/Pop artists the Indigo Girls, Shawn Mullins and Collective Soul, Atlanta has either birthed such luminaries or they have chosen to become a part of our collective and take advantage of the rich infrastructure developing around the Atlanta music community.

As music therapists, you are a vital link between the wellspring of music and the diverse people you serve. While in the area, take the opportunity to replenish yourself with the music Atlanta has to offer!

Sincerely,



Michele Rhea Caplinger



# WELCOME FROM CONFERENCE CHAIR

**W**elcome to the great city of Atlanta, Southern hospitality, and to *Music Therapy on My Mind*. It is a great pleasure to present the final program; as the title states, we want music therapy on your mind—and this conference is designed to do just that!

Preliminary conference offerings start on Monday, October 28<sup>th</sup> with Level One Training in the Bonny Method of **Guided Imagery and Music**, guided by Kenneth Bruscia. Beginning Wednesday, four Institutes will be available, addressing current requests. Barbara Reuer and Judy Simpson will chair **Innovative Business Strategies in the Music Therapy Marketplace**, Andrea Frisch Hara and Gary Hara will chair **When Music Therapy Meets Disaster Relief**, Sheri Robb will chair **Music Therapy in Pediatric Healthcare: Research and Best Practice Methods**, and Fredrick Tims and Margie Rodriguez Le Sage will chair **Addressing Cultural Complexities in Music Therapy Practice**.



*Michelle Hairston, EdD, MT-BC  
AMTA Vice President and  
Conference Chair*



It is exciting to announce that we have every letter of the alphabet used for CMTE's! That's right, we have **26 exciting CMTE's** for conference attendees to choose from. We think we've come up with a variety of courses that in some way will meet individual needs. Don't miss out on this opportunity to earn continuing education credit. Along with all the pre-conference activities we have **over 100 concurrent sessions** for everyone to choose from. Your choices will be difficult, but have fun—choose the things that are interesting to you!

The **Opening Ceremony** promises to be an event you won't want to miss. Not only will **Jana Stanfield** be performing, but also a special tribute will be given in memory of music therapy pioneer, **Robert Unkefer**, of Michigan State University. Immediately after the opening ceremony we will be moving to the Exhibit Area for the **Spectacular Silent Auction and Masquerade Party** — complete with Mardi Gras masks, beads, and balloons. Join **Leslie Hunter** and **Amber Weldon-Stephens** for the famous “bat” song. If you have a masquerade costume you want to wear, go for it!

Friday night promises to be a fabulous night of entertainment at **An Evening With Maureen McGovern**. Her performance is guaranteed to fill your heart and soul. Saturday is the famous **AMTA Cabaret**. Join in the fun and see if you can be AMTA's newest “idol”.

I hope you have a great conference experience. If you see me in the halls, please stop and introduce yourself. It is such an honor to be your Vice President and I want to meet as many of you as possible.

Happy planning!!!



# GREETINGS...

## ...FROM THE AMTA PRESIDENT

On behalf of the AMTA Executive Board, I would like to welcome you to the Fourth Annual AMTA Conference, "Music Therapy on My Mind." Congratulations on your decision to attend this exciting and stimulating conference! You will have many opportunities to re-energize and grow as a professional by attending the many, varied conference sessions offered this year. The outstanding program is comprehensive and diverse, with sessions for every level from beginning student to seasoned professional.

Be sure to save time for socializing and networking with friends old and new. You are sure to make long lasting connections with other professionals and students that will provide years of support and friendship.

We are all here to learn new information, stimulate our thinking, make connections, and have fun. Best wishes for a great conference experience!



Mary Adamek, PhD, MT-BC  
AMTA President

## ...FROM THE LOCAL ARRANGEMENTS COMMITTEE

The 4th Annual AMTA Conference has arrived! Welcome to Atlanta. We are honored to be your hosts and hope that each of you will enjoy your visit into our backyard. Throughout our Olympic City are endless opportunities to explore. Take time to visit the Olympic Park, the Georgia Dome, the Woodruff Arts Center, the High Museum, and the World of Coca-Cola. Of course, no visit would be complete without a visit to the Varsity.

Whether you like shopping or cultural events, we have it all in Atlanta. Underground Atlanta has unique and plentiful opportunities for shopping just walking distance from the Hilton Hotel. Also visit the Atlanta Ballet, Atlanta Opera, Atlanta Symphony and the Fox Theatre.

The local committee feels this conference will be rewarding for professionals and students as we put what is dear to our hearts and minds into the lives of others. Let us shower you with Southern grace and replenish your passion for music therapy. Enjoy our great city!

### Local Committee Co-Chairs

Amber S. Weldon-Stephens, EdS, MT-BC  
Ginger D. Bennett, MT-BC

### Volunteer Committee

Melissa C. Worden, MM, MT-BC, Chair  
Alanna Barber, MM, MT-BC  
Rachel Bruschi  
Shu M. Che, MT-BC  
Angela R. Chitwood  
Erin L. Jones, MT-BC  
Laura S. Lenz, MT-BC  
Emily K. Smith, MT-BC  
Melissa Steedley

### Instrument Committee

Elizabeth A. Hampshire, MT-BC, Chair  
Rebecca D. Blanchard, MT-BC  
Rachael Horn, MT-BC  
Angela M. Negri, MT-BC  
Dana Lee Smith, MT-BC  
Meredith D. Taylor, MT-BC

### Student Committee

Mary Lokey, MMT, MT-BC, Chair  
Lalah E. Manly, MM, MT-BC, Chair

### Outreach Committee

Elizabeth Herr, MT-BC, Chair

### Public Relations Committee

Carol Statella, MME, MT-BC, Chair

### Entertainment Committee

Roy Joyner, MM, Chair  
Stephanie Davis, RMT  
Darren Holbrook, DMA, MT-BC  
Danny James, MT-BC  
Rebecca James, MT-BC  
Roy Kennedy, MT-BC

# GENERAL INFORMATION

## Registration

Conference Registration will be located on the lobby level of the Hilton Atlanta.

### Tuesday, October 29

7:00 pm - 9:00 pm

### Wednesday, October 30

7:00 am - 11:30 am  
1:00 pm - 5:00 pm

### Thursday, October 31

7:00 am - 11:30 am  
1:00 pm - 5:00 pm

### Friday, November 1

7:00 am - 11:30 am  
1:00 pm - 5:00 pm

### Saturday, November 2

7:00 am - 11:30 am  
1:00 pm - 5:00 pm

### Sunday, November 3

7:00 am - 2:00 pm

## Cash Food Sales

For a quick and easy way to eat, cash food will be available in the Pre-function Area, 2<sup>nd</sup> floor.

### Thursday, October 31

Lunch - Noon - 2:00 pm

### Friday, November 1

Breakfast - 6:30 am - 8:30 am  
Lunch - 11:00 am - 2:00 pm

### Saturday, November 2

Breakfast - 6:30 am - 8:30 am  
Lunch - Noon - 2:00 pm

### Sunday, November 3

Breakfast - 6:30 am - 8:30 am

## Exhibits

The exhibits will be located in the Exhibit Hall, lower level of the hotel (one floor below lobby/conference registration). Be sure to catch the Exhibit Hall-Grand Opening at 9:30 pm on Thursday, October 31, and the "Exhibit Spectaculars," unopposed exhibit times scheduled for Friday and Saturday.

Don't forget to visit "Club AMTA" in the AMTA Exhibit Booth. Meet elected officers throughout the conference and learn more about your Association and how you can support the music therapy profession.

### Thursday, October 31

2:30 pm - 5:00 pm

*Grand Opening Masquerade Party,  
Silent Auction, Reception:  
9:30 pm - 11:00 pm*

### Friday, November 1

11:00 am - 5:00 pm

### *Exhibit Spectacular:*

11:00 am - 1:30 pm

### Saturday, November 2

9:00 am - 4:30 pm

### *Exhibit Spectacular -*

12:15 pm - 1:30 pm

## Audio Tapes

Audio recordings of many conference sessions will be offered for sale by Gaylor Multi Media at the conference. Check the conference program schedule for sessions that have granted permission to be recorded. Please note that sessions scheduled to be recorded are subject to change. Visit the the Gaylor table located on the 2nd floor for prices and a complete order form.

## Smoking Policy

Smoking is not allowed in the sessions, meeting rooms, or the Exhibit Hall.

## "Ask Me"

Questions about Atlanta - such as directions to nearby attractions and restaurant information - should be directed to the members of the local committee who will be wearing "Ask Me" buttons. They will be happy to assist you, as will the hotel concierge located in the lobby.

## What to Wear

We can guarantee that the temperature in the conference rooms will fluctuate dramatically from hot to cold. In addition, your own individual needs may differ. We suggest that you dress in layers so that you can adjust your apparel based on each meeting room's temperature.

## Seating

There is adequate space at the conference for each conference attendee to attend a session at each session time block. However, seating is limited in individual rooms. Please arrive early for sessions you wish to attend to guarantee a seat. Late arrivals disturb the sessions already in progress. Please be courteous if it becomes necessary to enter or leave a session that is underway. We cannot insure participation in individual sessions so plan to arrive early to ensure a seat.

## Business Needs

There is a Kinko's Copy Center in the hotel for all your photocopying and business needs. Office equipment such as computers will not be provided by the conference on-site but machines are available for use at Kinko's. You are responsible for all costs incurred. Please prepare your session handouts ahead of time and plan for extra handouts as presenters often run out.



# GENERAL INFORMATION

## Continuing Music Therapy Education Courses

Continuing Music Therapy Education (CMTE) course information will be available at the Registration Booth during registration hours. Please direct questions about board certification and MT-BC renewal requirements to the CBMT booth (#58 and 59), located in the Exhibit Hall.

## Speaker Ready Room

For the convenience of presenters, a speaker ready room will be located in the Jefferson room. The room will contain audio/visual equipment to help organize presentations.

## Press Room

During conference hours, all media representatives are asked to check in at the registration desk located on the lobby level of the Hilton Atlanta.

## Services for Persons with Disabilities

AMTA is committed to insuring participation for all conference attendees with disabilities. Every attempt has been made for full compliance with the Americans with Disabilities Act. Questions about hotel accessibility should be directed to the front desk of the hotel. Please contact someone at the conference registration desk if you need further assistance.

The Hilton Atlanta welcomes you to AMTA's annual conference! Per federal law, the hotel is in compliance with the standards set forth in the Americans with Disabilities Act. All areas of the hotel are accessible to anyone with any sort of disability.

Exhibit Hall – Access is available via elevator from the hotel's main lobby area to the Exhibit Hall on the lower level. (Stairs and escalators are available to this area also.)

Crystal Ballrooms (1<sup>st</sup> Floor) – Access is available to individuals using wheelchairs via lifts located on each set of stairs.

Meeting Rooms on 2<sup>nd</sup>, 3<sup>rd</sup>, and 4<sup>th</sup> floors – All public meeting spaces are accessible by elevator.

\*Elevators issue audible announcements for each floor and when the doors open announce whether the elevator is traveling up or down.

\*All floors of the hotel have visual and audible fire alarms systems as do guestrooms.

\*ADA communications equipment is available for guestrooms upon request. Inquire at the hotel front desk.

## Extra Event Tickets for Guests

Guest tickets to many special events of interest to your friends and family are available at the 2002 conference, including a pass to the Exhibit Hall for those not attending the conference. Tickets for the Opening Session, Conference Wrap-Up and the Exhibit Hall may be purchased at the Conference Registration Desk for \$5.00.

SONGS FROM THE HEART CONCERT — Your paid conference registration fee includes one admission to the *Songs From The Heart* Concert, An Evening With Maureen McGovern, on Friday, November 1, 2002. Paid conference attendees must wear their conference badges for admission to the concert. The event is general admission and general seating. Dress is business or cocktail attire. General admission tickets are available for guests and others not registered for the conference. Tickets must be purchased at the Conference Registration Desk or at the AMTA Booth in the Exhibit Hall for \$35.00. Exhibitors may purchase tickets at the AMTA Booth in the Exhibit Hall.

## Parking

Self- and valet-parking are available at the hotel. Current self-parking rates are \$12.00 per day, with in and out access not permitted. Valet parking is \$14.00 per day and does permit in and out access. The Peachtree Center Parking Garage is located at 227 Courtland Street, one block past the Hilton.

## A Word About Children...

Conference sessions and evening events are designed for professional audiences. Children under 10 years old may not find these events and activities interesting. Please be courteous to other conference attendees and plan accordingly.

## Childcare

Information on local childcare options can be obtained from the Concierge Desk. Conference organizers have not reviewed these childcare facilities and therefore cannot warrant their quality. You are responsible for payment for these services.

Nannies and Sitters 404-885-5782

Quality Childcare 404-479-4200

TLC Sitters 404-435-6250

## Refund Policy

Refunds for cancellations are available by written request only and must be mailed to the AMTA national office. Because of processing time and resources involved, full refunds cannot be made. 80% of fees will be refunded for requests postmarked September 3, 2002 or before. 50% of fees will be refunded for requests postmarked between September 4 and October 19, 2002. No refunds are made after October 19, 2002. Refunds will be processed after the conclusion of the conference.

# GRAND OPENING NIGHT

...featuring Jana Stanfield

Special  
Tribute to  
Robert F.  
Unkefer



**J**ana Stanfield is a triple-platinum singer-songwriter whose songs of love and life have been recorded by Reba McEntire, Andy Williams, Gary Morris, John Schneider, and Suzy Bogguss. The Bogguss and McEntire recordings have earned Jana gold and double-platinum albums for over two million copies sold. Her music has been heard on *The Oprah Winfrey Show*, *20/20*, and on a nationally televised AIDS special on ABC.



Jana travels the folk circuit performing in concert halls, church sanctuaries, alcohol and drug treatment centers, colleges, and business settings. Her concerts are filled with humorous and heart-warming insights about life, which keeps her in demand as a professional speaker as well as a performing artist. Stanfield says that, for her, the two occupations go hand in hand. "I can't sing without speaking and I can't speak without singing. With a dual career as a professional speaker who sings and as a singer-songwriter with a lot to say about life, I am able to enjoy doing it all."

Recently, one of Jana Stanfield's songs, "If I Had Only Known," has taken on a life of its own. Reba McEntire recorded the song as a tribute to her band members who were killed in a plane crash. A music video from the song is now raising money for St. Jude's Children's Hospital. The Texas State Police are using the song as the emotional finale of a long-form video created to illustrate the damage to people's lives from alcohol abuse. Don't miss Jana at the Opening Session and the Conference Wrap-Up on Sunday, November 3, Noon - 1:00 pm.

Thursday, October 31, 2002



7:30 pm

Grand Ballroom

Celebrate  
the Power of  
Music



Special  
Presentation  
for the New York  
City Music  
Therapy Relief  
Project

# OPENING NIGHT FESTIVITIES

Thursday, October 31, 2002

9:30 – 11:00 pm

Exhibit Hall



**C**elebrate the power of music with us at a post opening session Masquerade Party featuring the 2002 Exhibit Hall and the Spectacular Silent Auction with musical guests the Fulton County Jazz Trio. Be mysterious - Make a donation to the AMTA Conference Scholar Program and get a party mask to join the masquerade!

Masquerade  
Party

Exhibit  
Hall Grand  
Opening

**I**nclude shopping on your conference list! The Exhibit Hall features instruments, resources, materials, books, and gifts from around the world for discriminating music therapists. Unique items and conference specials abound! Visit Club AMTA for the latest music therapy information and materials.

**S**hop 'til you drop at The Spectacular Silent Auction – and support music therapy! Check out items from our exhibitors, members, and other friends and supporters of music therapy. All proceeds benefit the growth and practice of music therapy throughout the United States, including community outreach, technical assistance, and public education.

Support  
Music  
Therapy



# LIFETIME ACHIEVEMENT HONOREES

Roy  
Grant

**Roy Grant, PhD, RMT** has a career spanning 36 years and exemplifies an extraordinary combination of music therapy achievements as clinician, educator, and researcher. He holds bachelor and master degrees in church music, and a music therapy equivalency and doctorate in music therapy and music education from the University of Georgia. A Certified Hospital Chaplain, Roy's clinical work grew out of his service as a chaplain in state hospitals and prisons in Kentucky and Alabama. In 1970, he started the music therapy program at the university-affiliated Georgia Retardation Center, Athens (later named River's Crossing), beginning a relationship with the University of Georgia that would last more than three decades. Dr. Grant developed a national, highly sought-after music therapy internship program. One hundred and forty students completed their training with him, some of whom elected to extend the internship to take advantage of his program for supervisory training, the first ever of its kind. Dr. Grant directed practicum students, taught music therapy courses and has been awarded NAMT's Professional Practice Award, and two prestigious teaching awards. His former students and interns work as clinicians and educators throughout the country, including clinical training directors and six academic program directors.



Roy's service to the profession of music therapy includes Standing Committees, *Music Therapy Perspectives* Editorial Board, Assembly of Delegates, Judicial Review Board, Regional President and Executive Board positions. During his tenure as Council Coordinator, NAMT produced its first Code of Ethics, Standards of Clinical Practice, and Judicial Review Procedures. He chaired the Awards Committee for seven years, served on the first CBMT Examination Committee, chaired the Registration Committee, and was the local chair of the 1978 national conference here in Atlanta.

Roy Grant has presented nationally and internationally; published music, books and research articles in gerontology, developmental disabilities, and music therapy education and clinical training; and supervised numerous student research projects in addition to his own research. Although he recently retired as Associate Professor from the University of Georgia, Roy's commitment to music therapy continues as evidenced in two presentations at this conference. AMTA is proud to honor music therapist Dr. Roy Grant with a Lifetime Achievement Award.

**Anita Louise Steele, MMed, MT-BC** is one of the most industrious, enduring, and outstanding clinicians in music therapy. She entered the field in 1966 after completing a Bachelors Degree from Florida State University, an internship at Topeka State Hospital in Topeka, Kansas and a Master's Degree from the University of Kansas. She initiated the music therapy program at The Cleveland Music School Settlement, built it into a vibrant, thriving center, and has directed it for the last 36 years. She has been a primary force in the development of music therapy across the Cleveland area, including the Cleveland Consortium Degree Program in Music Therapy, the music therapy degree program at Case Western Reserve University, the provision of grant funds from the Kulas Foundation, and the development of music therapy clinical programs in countless agencies.

Anita  
Louise  
Steele



Louise Steele is the rare clinician who is also a prolific researcher. In 1984 in a JMT article on eminence and productivity, Louise was identified as the most published clinician in the field and today her vita reflects over 30 articles in referred journals. She also has written numerous manuals for clinical development and practice, and stimulated widespread dissemination of information about music therapy. In addition she has tirelessly served the profession through the *Journal of Music Therapy* Editorial Committee, the Publications Review Task Force, the Future of RMT Credential Task Force, and the training of interns too numerous to list.

Louise Steele has brought prestige to the field of music therapy through recognition of her endeavors. She has previously received the Clinical Practice Award from NAMT, the Suzanne Brookhart Harrison Award from Beech Brook Treatment Center, the Mu Phi Epsilon National Artists Member Merit Award, and the Ella Scoble Opperman Citation for Leadership in Music from the Florida State University. It is right and timely that she be recognized for these outstanding contributions to the profession with a Lifetime Achievement Award from the American Music Therapy Association.



The Event You've Been Waiting For...

**Friday,  
November 1  
8:00 pm  
Grand Ballroom**

*"Maureen McGovern is, quite simply, the most glorious singer to come down the pike in several months of Sundays."*  
- Mel Torme

*"The stylish Maureen McGovern can sing Gershwin like Joan Sutherland can sing Donizetti."*  
- Clive Barnes, *New York Post*

*"Maureen McGovern can make a song sound new and exciting even to its composer."*  
- Marvin Hamlisch

**AN EVENING WITH**  
**Maureen McGovern**  
**SONGS FROM THE HEART CONCERT**

**M**aureen McGovern is one of the great singers and performers of our time. Her 30-year career spans recordings, concerts, theater, films, television and radio. She has earned a reputation for being one of America's most popular artists, and to quote Mel Torme, "Maureen McGovern is, quite simply, the most glorious singer to come down the pike in several months of Sundays."

In addition to her artistic achievements, Maureen has a lifelong commitment to giving back to her community and the people around her. She has recently founded the *Works of Heart Foundation* for music and healing, and become an AMTA Artist Spokesperson for Music Therapy. This internationally renowned performer is the recipient of the 2001 *Songs From The Heart* Presidential Award presented by the American Music Therapy Association (AMTA) and The Recording Academy. The *Songs From The Heart* Award recognizes artists whose music captures the soul and spirit of music therapy, and the 2001 Award pays tribute to Maureen's commitment to and belief in the transforming power of music.

Your paid conference registration fee includes one ticket to this exciting concert. Conference badges will be required for admission to the concert. Additional tickets will be available for purchase at the Registration Desk. Dress is business or cocktail attire.

*Songs From The Heart Award Presented by AMTA and The Recording Academy.*

# SPECIAL EVENTS

**D**iscover the Journey — Community Drum Circle. Come and experience the drum circle journey, where new relationships, renewed energy, and deep connections are discovered. This year's drum circle will be facilitated by Christine Stevens AND special guests! Check out this fabulous interactive annual event and discover the health & wellness benefits of community drumming for yourself! Drum and percussion instruments provided by Remo, Inc.



**Saturday, November 2**  
**7:30 – 8:30 pm**  
**Grand Salon E**

**S**pend your lunch hour listening to these terrific local groups. Grab something to eat at the Cash Food Sales and then come on by. Located in the Exhibit Hall, lower level of the hotel.



**Friday November 1**  
*12:15 pm – 1:00 pm*  
**Suzuki Violin Studio of  
Mary Rhodes**

**Also scheduled to appear:**  
*Location and time to be announced*  
**Hansels and the Gretel**

**Saturday November 2**  
*11:30 am - 12:15 pm*  
**New Horizons Band of Atlanta**

**T**ired of the same old conference routine, need an avenue to break out and express yourself? If so, come to the Cabaret! Join Roy Joyner, Roy Kennedy and the Entertainment Committee as they co-host an evening of laughter and music. Performance slots will go fast, so sign up early to be part of the show. All are invited to be entertained by your fellow students, colleagues, and maybe by some of your teachers! This will be an evening that we're sure you'll never forget.



**Saturday, November 2**  
**9:00 pm – 1:00 am**  
**Grand Ballroom West**



# SPECIAL EVENTS



## Internat'l Relations Networking Breakfast

**W**elcome to all International Students, Professionals, and other Guests who are interested in International Music Therapy Issues! The International Relations Committee of AMTA invites you to attend the Annual International Relations Networking Breakfast. The purpose of this annual networking meeting is to foster international relationships and to help make the experience of international participants of the AMTA conference as enriching as possible. The International Relations Committee is interested in learning about what international guests are thinking and in exploring ways in which we can help foster positive experiences for people from all countries. Purchase your breakfast at the Cash Food Sales, then come on by. Committee members will be in attendance to facilitate a collaborative dialogue between and among music therapists from around the world. We encourage everyone to attend.

**Friday, November 1**  
**7:00 – 8:00 am**  
**Adams**

**D**esignated tables will be available for specific population and interest areas. Come network with your colleagues to exchange ideas and create solutions to music therapy practice challenges. Take advantage of this opportunity to make new friends while sharing your professional concerns and questions. Feel free to buy your breakfast and head to the area where tables will be provided for networking.



## Networking Breakfasts

**Developmental Disabilities**  
**Disaster Relief**  
**Forensics/Corrections**  
**Geriatrics**  
**General Medical**  
**International Relations – Adams Room**  
**Mental Health**  
**Music Therapy Education**  
**Rehabilitation (Neuro)**  
**Self Employment**  
**Special Education**  
**Substance Abuse**

**Friday, November 1**  
**7:00 – 8:00 am**  
**Pre-Function Area**



# SPECIAL EVENTS

**A** FIRST for AMTA! An unopposed Networking Session! Ten groups, facilitated by members of the Standards and Special Target Populations Committee, as well as the regular meeting of the Early Childhood Roundtable, chaired by Ronna Kaplan and Marcia Humpal, will be available for networking around the lunch hour. Participants will have the opportunity to attend one or two subgroups sharing mutual concerns, government relations issues, research findings, public relations needs and establishing information and support systems for future networking opportunities. Please join us in this special session where all can participate in the furthering of our profession!



**Addictive Disorders/Substance Abuse**  
**Consultant/Private Practice**  
**Developmental Disabilities**  
**Educational Settings**

**Forensics/Corrections**  
**Geriatric Settings**  
**Medical Settings**  
**Early Childhood Roundtable**

**Mental Health**  
**Physical Disabilities**  
**Wellness**

**Friday, November 1**  
**11:00 am – 1:30 pm**  
**Grand Ballroom**



**T**he attacks of September 11, 2001, as well as our emotions and reactions, have been described by many as unspeakable. Few if any words can express the horror, fear, grief, and guilt we may have experienced. But music therapists know that the power of music and music therapy can reach, touch, and bring to light that which cannot be spoken. Music therapy has played an important role in helping communities cope with tragic events in Northridge, California; Oklahoma City, Oklahoma; Littleton, Colorado; San Diego, California; and New York City. This special track of sessions will focus on the role and impact of music therapy in responding to trauma and grief and helps the music therapy community prepare for the future. Institutes and CMTEs require pre-registration and extra fee. Check session schedule for times and locations.

- ◆ **When Music Therapy Meets Disaster Relief**
- ◆ **CMTE C. Awakening the Body from Trauma: Interventions with Music and Movement**
- ◆ **CMTE R. Secondary Traumatic Stress Symptoms, Healing the Healer's Spirit; Recovery and Renewal**
- ◆ **CMTE V. The Use of Music in Trauma: Caring for the Caregiver**
- ◆ **Bringing Lives to Closure**
- ◆ **Using Orff-Schulwerk to Facilitate Support Groups for Children's Bereavement**

- ◆ **The Grief Songwriting Process and Grief Process Scale: Applications with Bereaved Adolescents**
- ◆ **Surviving Suicide: A Perspective on the Role of Music Therapy for Both the Therapist and the Client**
- ◆ **The New York City Music Therapy Relief Project: A Case Study**
- ◆ **Music and Prayer: Pictures for the Soul**
- ◆ **Music Therapy in Trauma Situations: A Panel Discussion**
- ◆ **The Melodies of Grief: Sounds of the Healing**

# SPECIAL EVENTS

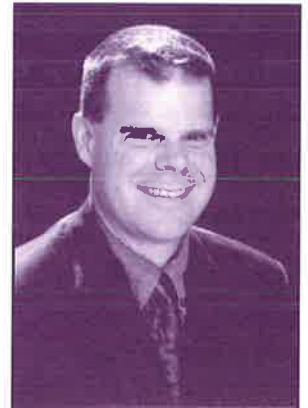
Plenary  
Session

## Reimbursement Systems in Today's Healthcare Environment: Overcoming the Roadblocks

Friday, November 1  
9:45 - 11:00 am  
Grand Ballroom

**C**hristopher M. Johnson, PhD and his wife **Cynthia Johnson**, a physical therapist, own TherapyWorks, P.A., a complete rehabilitation agency offering services in physical therapy, occupational therapy, speech therapy, case management, health and wellness education, and athletic training/sport-specific rehab. Specialized programs include pediatrics, aquatic therapy, chronic pain/fatigue treatment, and industrial medicine. In addition, the agency operates both a Wellness Center and a Sports Performance Wing, and serves as a partner in the Kansas Center for Athletic Medicine.

Since beginning in 1994, TherapyWorks has experienced significant growth in several areas. In 1994, they opened with a staff of 2, a referral source of 3 physicians, and a client base of 205 in a 1000 square foot treatment area. Today, TherapyWorks boasts a staff of 67, a referral source of 250 physicians, and a client base of 2448 in a 12,000 square foot custom designed treatment facility within a medical office building.



Being co-owner of TherapyWorks is only half of the story, however, as Dr. Johnson is also associate professor and Director of Music Education at the University of Kansas. Due to his experience as a professor at KU and having earned his undergraduate and graduate degrees from The Florida State University, Dr. Johnson is very familiar with music therapy. He is currently the editor of the *International Journal of Music Education*, the research publication of the International Society for Music Education and has published articles in many journals including the *Journal of Research in Music Education*, the *Journal of Music Therapy*, *Psychomusicology*, *Journal of Band Research*, and the *Bulletin of the Council for Research in Music Education*. Dr. Johnson has been a consistent contributor to music therapy research sessions at national conferences, has been an active member of the Research Seminar with the International Society for Music Education, and has also served on the editorial board of the *Journal of Research in Music Education*. His research interests include applied research in music education, applied research in music therapy, and basic research in the psychology of music.

For this plenary session, Dr. Johnson will combine his expertise as co-owner of a successful therapy business with his knowledge of music therapy to discuss the challenges and opportunities of current healthcare reimbursement systems. Following a review of third party payers, Dr. Johnson will address the process for payment with insight into provider credentialing, contract development, and billing. Highlights will include recommendations for overcoming roadblocks, with attention to research, documentation, and communication with the Centers for Medicare & Medicaid Services (CMS) and insurance company representatives.



# SPECIAL EVENTS

**T**he following rooms and times have been reserved for open jam sessions. Bring your talent and enjoy! Some instruments will be provided.

**Jam  
Rooms**

**Thursday, October 31 & Friday, November 1**  
**11:30 pm – 2:00 am**      **11:00 pm – 2:00 am**

**Fayette  
Grand Salon E  
Walton**

**Public  
Relations  
Session**

**T**he Public Relations Session, featuring Clinical Training Sites, is an informal session sponsored by the Employment and Public Relations Committee. This event offers the opportunity for students to explore internship site displays and professional members to view public relations materials presented by colleagues. You are cordially invited to stop by at any time during the session to meet with the presenters.

**Presenters include:**

**Finger Lakes Developmental Disabilities Service Office/Newark**  
*Newark, New York*  
*Donna W. Polen, MT-BC*

**Kardon Institute for Arts Therapy**  
*Philadelphia, PA*  
*Christine C. Wineberg, MT-BC*

**Park Nicollet Health Services**  
Methodist Hospital  
*Minneapolis, MN*  
*Dawn M. Miller, MME, MT-BC, Annie Heiderscheid, MA, MT-BC*

**Bethany Lutheran Village**  
*Dayton, OH*  
*Larisa McHugh, MT-BC*

**Banner Health System**  
*Phoenix, AZ*  
*Tracy Leonard-Warner, MT-BC*

**Saturday, November 2**  
**9:00 am – 10:30 am**  
**Grand Salon E**

# RESEARCH POSTER SESSION



## Research Poster Session

The Research Poster Session showcases current music therapy research from around the world. Each presenter will have an exhibition area, and attendees are free to wander about sampling studies of choice with the opportunity for informally meeting the authors and discussing their research with them. Graphs, figures, and tables will be displayed, with handouts available.

**Saturday, November 2**  
**1:30 pm – 3:30 pm**  
**Grand Salon E**

### Research Poster Session Presentations:

Recorded and Live Music Presented to Premature Infants: Outcomes and Behaviors and Physiological Responses

*Deanna Hanson Abromeit (Iowa City, IA)*

The Effects of Amplitude and Rhythmic Strength on Heart Rate Entrainment and Perceived Relaxation

*Alpha Mu Alpha (Tallahassee, FL)*

Profiles of Music Therapy Students in the Mid-Atlantic Region of the United States

*Danielle Berardini, Simone Scanlon, Jessica Perl and Mary E. Boyle (New Paltz, NY)*

An Examination of the Preference for Background Music in Everyday Life

*Gina Bisquert, Fanny Liu and Mary E. Boyle (New Paltz, NY)*

The Soprano Recorder as a Treatment Aid for Children with Developmental Apraxia of Speech

*Laryssa M. Briggs (Owings Mills, MD)*

Cancer Patients' Preference in Music Therapy Modalities and Perceived Benefits and Barriers to Participating in Music Therapy

*Debra S. Burns (Indianapolis, IN)*

An Examination of Question Asking Skills and Teacher Response in a Peer Teaching Situation

*Jane Cassidy (Baton Rouge, LA)*

The Effect of Rhythmic Auditory Stimulation (RAS) on Gait Characteristics of Persons in Late Stage Dementia

*Alicia Clair and Majorie O'Konski (Lawrence, KS)*

Song Preference as a Reflection of Sexual Deviance

*Peggy A. Coddling (Boston, MA)*

Masterclass Instruction by an Artist/Performer

*Elaine J. Colprit (Bowling Green, OH)*

The Effects of Composition (Art or Music) on the Self-Concept of Hospitalized Children

*Cynthia M. Colwell (Lawrence, KS)*

Music in Inclusive Programs for Hearing Impaired Students: Two Case Studies

*Alice-Ann Darrow (Lawrence, KS), Roseanne Rosenthal (Chicago, IL)*

Professional Longevity Among Music Therapists

*Anthony DeCuir (New Orleans, LA)*

The Effect of Melodic and Rhythmic Cueing on Young Children's Speech Intelligibility: A Pilot Study

*Shannon de l'Etoile, Irit S. Greenberg and Marilyn Cardso (Miami, FL)*

The Effects of Background Music on College Students While Studying

*Katie Dziedzic, Jamie M. Schumer and Mary E. Boyle (New Paltz, NY)*

The Effect of Selected Presentation Formats on Ninth Grade Students' Choices of Community Service Opportunities

*William E. Fredrickson (Kansas City, MO), Alice-Ann Darrow (Lawrence, KS), Suzanne Rita Byrnes (Kansas City, MO)*

A Comparison of Music in Television Commercials: 1990 vs. 2001

*John M. Geringer (Tallahassee, FL)*

Factors that Influence the Current Musical Preferences of Music Therapy Students

*Terry Glusko, Yui Murakami, Melissa Rodgers and Mary E. Boyle (New Paltz, NY)*

The Effect of Music Versus Emphasized Speech on Echolalic Autistic Children

*Amanda K. Gore (Tallahassee, FL)*

Wanted: Music Therapists: A Study of the Need for Music Therapists in the Coming Decade

*Robert W. Groene (Kansas City, MO)*

Computer-based Duration Recording of Group Participation and Leader Effectiveness: Applications for Music Therapy

*Dianne Gregory (Tallahassee, FL)*

Juliette Alvin: Her Legacy for Music Therapy in Japan

*Eri Hanesih (Lawrence, KS) and Showa University of Music (Kanagawa, Japan)*

The Effects of Music Therapy on the Quality of Life of People Diagnosed with Terminal Cancer

*Russell E. Hilliard (New Paltz, NY)*

Attitudes Toward Students with Disabilities and Inclusion: A Preliminary Review of Music Research (1975-2000)

*Judith A. Jellison and Donald M. Taylor (Austin, TX)*

# RESEARCH POSTER SESSION

## Research Poster Session Presentations continued:

Effect of Positive Reinforcement on Therapist Productivity

*Christopher M. Johnson (Lawrence, KS)*

The Effects of Group Drumming on Selected Neuroendocrine Levels and Self-Reported Mood, Stress, Socialization, and Transpersonal Experiences

*Carolyn Koebel (Kalamazoo, MI)*

A Survey on Music and Dreams

*Hope Kumme, Amy Nelson and Mary E. Boyle (New Paltz, NY)*

A Study of the Effects of Participation in Drum Circles

*Meryl Lammers, Christine Laplante and Mary E. Boyle (New Paltz, NY)*

Where Are We Now— Survey Research on Current Music Therapy Distance Education

*Chih Chen Sophia Lee (Weatherford, OK)*

Time Spent in Applied Practice: Music Therapists vs. Other Musicians

*Clifford K. Madsen and John K. Southall (Tallahassee, FL)*

Music Therapy Student's Perceptions of Older and Younger Males and Females Exhibiting Forgetfulness

*Katia Madsen (Syracuse, NY)*

In Harmony with Your Heart: Music Therapy Research in Cardiac Rehabilitation

*Susan E. Mandel (Willoughby Hills, OH) and Suzanne B. Hanser (Boston, MA)*

Music and Reading: Evidence of Shared Cognitive Processes—Implications for Dyslexia Treatment

*Kiran J. Montague (Medford, MA)*

Effects of Music on the Behaviors of a Five-Year Old Girl with Autism

*Randall S. Moore (Eugene, OR)*

Influence of Combined and Expressive Music Therapy on Anxiety and Relaxation Upon

Adolescents with Disruptive Behavior Disorder Tendencies: A Pilot Study

*Ryoko Ohara (Marlton, NJ)*

The Effect of High-Low versus Low-High Intonation Intervals on Short Utterance Production in Patients with Aphasia

*Masako Otera (Tallahassee, FL)*

The Effect of Music Therapy on Reducing Patient Distress Associated with External Radiation Simulation Procedure: Four Case Studies

*Varvara Pasiali (Cleveland Heights, OH)*

The Use of Prescriptive Therapeutic Songs to Promote Social Skills Acquisition by Children with Autism: Three Case Studies

*Varvara Pasiali (Cleveland Heights, OH)*

Music Therapy for Older People: Research Designs, Practices, Protocols, and Their Clinical Implications

*Carol A. Prickett (Tuscaloosa, AL)*

Music Therapy with Adults Who Have Severe and Profound Developmental Disabilities: Clinical Approaches, Focus of Practice, and Role of the Music Therapist: A Literature Review

*Roia Rafieyan (Flemington, NJ)*

Consultation and Collaboration: A Survey of Board-Certified Music Therapists

*Dena Register (Tallahassee, FL)*

Therapeutic Music Interventions and Group Participation Skills of Preschoolers with Visual Impairments

*Sheri L. Robb (Kansas City, MO)*

The Effect of Music Therapy Intervention on Pre-Operative Anxiety of Pediatric Patients as Measured by Self Report

*Andrea Scheve (Tallahassee, FL)*

Effect of Headphone Music on Outcome After CABG (Coronary Artery Bypass Grafting)

*Fred J. Schwartz (Atlanta, GA)*

The Influence of Music on the Symptoms of Psychosis: A Meta-Analysis

*Michael J. Silverman (Austin, TX)*

An Examination of Institutional Web-Sites of American Music Therapy Association Approved Academic Programs for Characteristics of Web-Site Effectiveness and Music Therapy Content

*David S. Smith (Kalamazoo, MI)*

Imaging to Music: Differences Between Music Majors and Non-Music Majors

*Sybil Smith (Cookeville, TN)*

A Meta-Analysis of the Efficacy of Music Therapy for Pediatric Patients

*Jayne M. Standley and Jennifer Whipple (Tallahassee, FL)*

Music Therapy as Procedural Support: Benefits for Patients and Staff

*Darcy DeLoach Walworth (Tallahassee, FL)*

The Effects of Music Memorization on General Education Classes

*Crystal Weaver (St. Charles, MO)*

Hospitalized Children with Cystic Fibrosis: The Perceived Effects of Individual Music Therapy Sessions on Their Physical, Psychological, and Interpersonal States

*Caryn Widrick (Philadelphia, PA)*

Anticipated Pleasure, Choice, and Actual Enjoyment of Music

*Annette H. Zalanowski and Valerie N. Stratton (Altoona, PA)*





# GUIDED IMAGERY IN MUSIC TRAINING

**An Introduction to the Bonny Method of Guided Imagery and Music (GIM) Level I Training Through Lectures, Demonstrations, and Supervised Experiences as Guide and Traveler**

**PRESENTER:**

**Kenneth Bruscia, PhD, MT-BC**

Monday, October 28 – Thursday, October 31

9:00 am to 7:00 pm

Board Room

40 CMTE CREDITS

COST TO AMTA MEMBERS \$500

**Topics will include:**

- ◆ History of GIM
- ◆ Distinctions between GIM and related practices
- ◆ Variables to consider when using music for relaxation and imagery purposes
- ◆ Procedural elements of the individual GIM session
- ◆ Contraindications
- ◆ Ethical issues

This training is fully endorsed by the Association for Music and Imagery, co-sponsored by Therapeutic Arts Psychotherapy and Training Institutes, and may be used toward completion of requirements for becoming an AMI fellow. In addition, participants may receive 40 CMTE credits. Pre-registration and pre-approval required.

**Competency objectives are as follows:**

- ◆ Understanding of the defining features of individual and group forms of the Bonny method, as compared to related techniques in music therapy, psychotherapy, and healing
- ◆ Understanding how to design and vary therapeutic listening experiences involving music, relaxation, and imagery
- ◆ Ability to image to music in an altered state of consciousness
- ◆ Understanding of the main procedural considerations in each component of a GIM session
- ◆ Understanding of the basic requirements of guiding
- ◆ Understanding of important contraindications and ethical issues in GIM



# PRE-CONFERENCE INSTITUTES

## Innovative Business Strategies in the Music Therapy Marketplace

Wednesday, October 30

8:00 am – 3:00 pm

Grand Salon C

6 CMTE CREDITS

COST \$110



### CO-CHAIRS:

**Barbara Reuer, PhD, MT-BC**

**Judy Simpson, MHP, MT-BC**

**E**xplore current and future markets for music therapy and the tools necessary for therapists to successfully prepare for these clinical practice opportunities. Effective business techniques will be presented through case examples of creative program development and a review of strategic administrative skills. Discussion will also include consideration of the financial aspects of music therapy service delivery.

### The Institute will provide:

- ◆ Overview of current employment trends and future practice opportunities for music therapy
- ◆ Panel presentation on cutting edge models of music therapy program development
- ◆ Introduction to effective business plans and the logistics of establishing your practice
- ◆ Creating effective public relations materials and marketing tools
- ◆ Outline of service delivery methods including in-house, consultative, and contractual
- ◆ Review of successful strategies for expanding services within existing clinical areas
- ◆ Examination of reimbursement options available for coverage of music therapy
- ◆ Discussion of management techniques and possibilities for diversification

### Speakers to include:

*Steve Bloom, SCORE Chairman, Atlanta Chapter; Michelle Lazar, MT-BC; Genavieve Lundblad, MT-BC; Barbara Reuer, PhD, MT-BC; Margaret Roesch, MS, MT-BC; Julie Romeo, Brook Mays Music; Judy Simpson, MHP, MT-BC; Amber Weldon-Stephens, EdS, MT-BC*

## When Music Therapy Meets Disaster Relief

Wednesday, October 30

3:30 – 10:30 pm

Newton

6 CMTE CREDITS

COST \$110



### CO-CHAIRS:

**Andrea Frisch Hara, MA, MT-BC**

**Gary M. Hara MA, CGP, MT-BC**

### The Institute will provide:

- ◆ An overview of trauma work
- ◆ A panel discussion of organizing a music therapy relief effort based upon the disasters of September 11<sup>th</sup>, Columbine High School, Oklahoma City, and Northridge Earthquake
- ◆ A didactic presentation on the application of music therapy techniques for traumatized people
- ◆ A presentation of case studies to illustrate therapy applications
- ◆ Experiential activities on the role of music for music therapists, working within disaster, and with clients

### Speakers to include:

*Andrea Frisch Hara MA, MT-BC, Gary M. Hara MA, CGP, MT-BC, Ronald Borczon MM, MT-BC, Frank Bosco MA, MT-BC, Kate Richards Geller MA, MT-BC, Joanne Loewy, DA, MT-BC, Tamara Zavislan, MMT, MT-BC.*

# PRE-CONFERENCE INSTITUTES

## Music Therapy in Pediatric Healthcare: Research and Best Practice Methods

Wednesday, October 30

3:30 – 10:30 pm

Grand Salon C

6 CMTE CREDITS

COST \$110



### CHAIR:

**Sheri L. Robb, PhD, MT-BC**

### The Institute will provide:

- ◆ An overview of clinical theory and research that provide the foundation for best practice methods in pediatric music therapy
- ◆ An overview of premature infant studies, including the use of music and multimodal stimulation
- ◆ Best practice and documentation of clinical outcomes for pediatric hospice patients
- ◆ Theory and research on the psychosocial needs of chronically ill patients and three unique research-based protocols
- ◆ Clinical applications of music in acute burn care and rehabilitation
- ◆ Information on Neurologic Music Therapy techniques in pediatric rehabilitation
- ◆ An overview of procedural support and pain management protocols
- ◆ Outcomes from research in the area of critical care and mechanical ventilation
- ◆ Methods for program development and quality assurance

### Speakers to include:

*Deanna Hanson Abromeit, MA, MT-BC; Debra S. Burns, PhD, FAMI, MT-BC; Alicia A. Clair, PhD, MT-BC; Allison G. Ebberts, MME, MT-BC; Michele Erich, MM, MT-BC; Ann Hannan, MT-BC; Russell Hilliard, PhD, LCSW, MT-BC; Sarah Johnson, MM, MT-BC; Robert E. Krout, EdD, MT-BC; Deforia Lane, PhD, MT-BC; Sheri L. Robb, PhD, MT-BC; Jayne M. Standley, PhD, MT-BC; Janice W. Stouffer, MT-BC; Christine Tuden, MS, MT-BC; Darcy Walworth, MT-BC; Jennifer Whipple, MM, MT-BC*

## Addressing Cultural Complexities in Music Therapy Practice

Wednesday, October 30

3:30 – 10:30 pm

Grand Salon A

6 CMTE CREDITS

COST \$110



### CO-CHAIRS:

**Frederick Tims, PhD, MT-BC**

**Margie Rodriguez Le Sage,  
PhD, LMSW**

### The Institute will address:

- ◆ The complexities of culture in practice
- ◆ Becoming a culturally responsive music therapist
- ◆ Looking into the mirror: Cultural self-assessment
- ◆ Latino grief
- ◆ Cultural complexities in end-of-life-care
- ◆ Sexual minority cultures: Persons who are identified as lesbian, bi-sexual, gay and transgender
- ◆ Adapting music therapy practices: Clinical issues
- ◆ Demonstration of the importance of world musics to the practice of culturally-sensitive music therapy
- ◆ Scenarios in cultural complexities

### Speakers to include:

*Margie Rodriguez Le Sage, PhD, LMSW; Frederick Tims, PhD, MT-BC; Carolyn Koebel, MM, MT-BC; Kristen Mei Cole, MM, MT-BC*



# CMTE INFORMATION

**Edward Gallagher, MT-BC and Christine Routhier, MA, LMHC, MT-BC**  
**Co-chairs, AMTA Continuing Education Committee**

**T**he AMTA Continuing Education Committee would like to clarify some of the continuing education options available at this conference. Participants can earn five CMTE credits for attending this Conference. CMTE credit is offered for attendance at AMTA Conferences, as AMTA is a pre-approved provider of Continuing Music Therapy Education activities. CBMT Guidelines state that an individual can earn five of this type of CMTE credits per conference with a maximum of fifteen CMTE credits per five year cycle.

Twenty-six intensive workshops and four Pre-conference Institutes are being offered this year, which are pre-approved by the CBMT. Registrants will receive a certificate indicating completion of each learning experience. According to CBMT guidelines, members choosing this option will need only their certificate for documentation; no summary is required. It is mandatory that you arrive on time and stay for the entire length of each course for credit.

Umbrella groupings can be combined using some of the workshops at this conference. Umbrella groupings are “a group of related workshops, courses, and programs, each fewer than five contact hours, which can be incorporated under a theme or unifying topic relating to the Examination Content Outline and results in a total of at least five contact hours in duration” (pg. 26 Recertification Manual). Eligibility for this type of educational activity requires documentation from the participant. Umbrella groupings must be completed within a 12-month period. These are not pre-approved activities.

Short event activities are any sessions at this conference which are fewer than five (5) contact hours of learning activity. In this category, up to 15 CMTE credits per five-year recertification cycle will be allowed by the CBMT. Documentation is a certificate or other proof of attendance at the event. It is up to the individuals to monitor their limit. These are not pre-approved activities and AMTA is not responsible for the participant’s choice of short event activities

Documentation Required for Non-Pre Approved Education Programs and Umbrella Groupings:

1. Activity Title
2. Sponsor (AMTA in this instance)
3. Name of Instructor(s)
4. A written summary of the learning experience and its application to music therapy practice and the Examination Content Outline (approximately 250 words)
5. A copy of the conference brochure for the activity
6. Proof of attendance
7. Number of contact hours in each session.
8. Umbrella groupings must list the unifying topic, session titles, date(s) and instructor(s) for each session.

If you have any questions regarding the AMTA continuing education activities at this conference, please contact the co-chairs, Edward Gallagher or Christine Routhier. If you have questions regarding the recertification process or accumulation of CMTE credits, contact the Certification Board for Music Therapists at 1-800-CBMT. CBMT is ultimately the authority on CMTE requirements for recertification. You are responsible for gathering documentation of your continuing education credits so remember to pick up your CMTE certificate after each CMTE and your conference attendance certificate at the close of the conference.



# CMTE COURSES

October 31, 2002  
7:30 am - 12:30 pm

## **A. Raise the Bar: Challenging Clients with Developmental Disabilities to Reach their Potential**

*Presenter(s): Ruthlee F. Adler, MT-BC; Catherine D. Knoll, MT-BC*

Two experienced clinicians will share a wealth of music therapy strategies designed to challenge children and adults with developmental disabilities to stretch toward their potential. Target skills include communication, perceptual-motor, functional daily living, social interaction, as well as the ability to make music with others and for their own enjoyment.

## **B. Oh Banjo, Where Art Thou? A Banjo Experiential**

*Presenter(s): Robert Groene, II, PhD, MT-BC*

This workshop/experiential will cover the history, styles, and basics of the 5-string banjo. Banjos will be available for use. We will try several of the different styles of banjo, including clawhammer, frailing, melodic, and bluegrass. Implications for music therapy will be discussed.

## **C. Awakening the Body from Trauma: Interventions with Music and Movement**

*Presenter(s): Carolyn Braddock, MA*

Participants will learn the three embodiments of trauma: rigid, collapsed, and inanimate, each with their own respective breath, sound and movement patterns. Music and movement will be used to gather information about trauma, observing the three dimensional body. Specific intervention strategies will be demonstrated, with music, to balance the body, mind and spirit.

## **D. Basic Blues: Blues Guitar Accompaniment Skills**

*Presenter(s): Robert E. Jordan, Jr., MA, MT-BC*

This course is designed to increase and enrich basic blues guitar accompaniment skills. It includes discussion/demonstration of blues form and feel, picking patterns for blues, basic blues chord vocabulary, some basic blues fills and turnarounds, and blues boogie patterns.

## **E. Singin' and Swingin': An Exploration of Gospel Music Style for the Music Therapist**

*Presenter(s): Donna Cox, PhD*

Gospel music is a dramatic, highly expressive music, capable of reaching deep into the hearts and souls of both listeners and performers. The improvisational nature of the music encourages spontaneous involvement, manifested through hand clapping, foot stomping, finger popping, bodily movements, dance, and verbal and nonverbal interjections. In the session, participants will actively explore the spontaneously improvised songs, folk spirituals, and other "black church songs" associated with this vital American genre.



## **F. Continuing Education - Making the Most of Your Investment**

*Presenter(s): Nancy A. Hadsell, PhD, MT-BC*

This presentation focuses on assisting new and seasoned MT-BCs with managing their continuing education programs. It focuses on (a) understanding the options for continuing education; (b) deciding on content areas for education; (c) planning a cohesive education program; and (d) maximizing the benefits accrued from the dollars invested.

## **G. Music Therapy Anger Management: Bombardment of Session Plan Ideas and a Database**

*Presenter(s): Thea Morton; Lee Anna Rasar, MME, WMTR, MT-BC; Amy M. Ray*

Five years of session plans that were used successfully with inmates behind bars will be presented by topics and themes. A database of

these session plans, including responses of inmates and lists of songs, songbooks, CDs, and videotapes relating to anger management, will be included on CD-ROM.

## **H. Internship Director Training**

*Presenter(s): Mavis N. Mahlberg, MA, MT-BC, and members of the Clinical Training Committee*

This course reviews the National Roster Internship Guidelines and application process, the AMTA Professional Competencies as a foundation for training, and basic supervisory strategies. It fulfills the supervision training requirement for the National Roster Internship Directors, but is open and applicable to all music therapy internship supervisors.

## **I. Music and Soulmaking: Theory of Music Therapy Practice Based on Complexity Science**

*Presenter(s): Barbara J. Crowe, MM, MT-BC*

This presentation will introduce a theoretical model of music therapy practice based on the principles of Complexity Science and make a case for its use in investigation music therapy process. Complexity Science is a widely recognized scientific approach that emphasizes wholeness as opposed to reductionism and the non-linear influence of variables as opposed to linear cause and effect.

## **J. Applied Professional Percussion Techniques in Clinical Practice**

*Presenter(s): Vaughn A. Kaser, MCAI, MT-BC*

Those attending this presentation will be given instruction on how to play the main latin percussion instruments (congas, bongos, and timbales) and the drum set. Methods for applying this knowledge to a music therapy group setting will also be discussed. Emphasis will be given to a forensic/psychiatric population.

## **K. Making Sense of the Results Section: A Guide to Basic Statistics for Music Therapists**

*Presenter(s): Mike D. Brownell, MME, MT-BC; Claire M. Ghetti, MME, MT-BC*

Research in music therapy is vital for the development of the profession. Comprehension of

# CMTE COURSES

research methods enables one to garner the most from such research. This painless exploration of statistical method will introduce research design and familiarize participants to interpret statistics found in journals such as the Journal of Music Therapy.

October 31, 2002  
1:30 pm - 6:30 pm

## L. The Harmonious Pair: Sensory Integration and Music Therapy

*Presenter(s): Aubrey Lande, MS, OTR*

This course will provide an overview of sensory integration theory and treatment. The presenter will share the results of her clinical experience with effective and purposeful use of music as a movement and integration facilitator and as a diagnostic and treatment protocol for children with autism.

## M. Hip Guitar Skills for Music Therapists

*Presenter(s): Robert Krout, EdD, MT-BC*

This workshop is designed to teach music therapy clinicians hands-on contemporary guitar skills for inclusion in their work, with emphasis on hip chords, strums, progressions, stylistic embellishments, simple leads, songs, and improvisation skills in rock and blues styles. The emphasis is on developing contemporary guitar skills that will allow the therapist to be truly creative in how they use guitar in their work. We will also explore melodic and rhythmic improvisation.



## N. The World of Drumming - An Overview of Technique and Rhythmical Skill Development for Music Therapists

*Presenter(s): John Scalici, Christine Stevens, MSW, MT-BC*

This course will cover world percussion instruments and the art of spoken syllables to develop a sense of rhythm. Drums will include frame drum, tabla, conga, djembe, tambourine, talking drum, bongos, and others.

## O. Beginning Spanish for the Music Therapist

*Presenter(s): Elsa Maria Garcia, MT-BC; Jennifer Rathbun, MM, MT-BC*

This experiential presentation is intended for those who speak minimal to no Spanish. After reviewing pronunciation, vocabulary, and common phrases, participants will role-play sessions in simple Spanish. They will also learn to sing and play four popular Spanish folk songs. Participants will leave with excellent resources and increased confidence.

## P. Training in Group Clinical Improvisation as a Music Psychotherapy Methodology

*Presenter(s): Susan C. Gardstrom, MA, MT-BC; James M. Hiller, MMT, MT-BC*

This clinical improvisation training is designed to provide music therapists with basic knowledge and skills for addressing clients' psychotherapeutic needs in a group setting. Through experiential and didactic engagement, participants will learn essential processes and structures for designing and guiding effective group clinical improvisation experiences.

## Q. Singing: A Professional and Personal Need

*Presenter(s): Kate Richards Geller, MA, MT-BC; Sylka Uhlig, MA, RMTh*

Singing is a powerful and effective music therapy tool. This experiential workshop explores intra and interpersonal dimensions of our primary instrument, voice. Participants are invited into a process of personal awareness of their own voices and professional discussion about the impact of singing in a variety of clinical settings.



## R. Secondary Traumatic Stress Symptoms, Healing the Healer's Spirit; Recovery and Renewal

*Presenter(s): Trudy Shulman Fagen, LMHC, ACMT*

This workshop for very experienced clinicians, uses intermodal therapies (music, art, psychodrama, and movement), imagery and altered state methodology (imagery techniques, hypnosis and focusing) to provide a forum for exploring transference dynamics and supervision in recovering from secondary trauma. Music improvisation, imaging, songwriting, visual art and movement techniques will facilitate renewal and self growth for therapists who are struggling with burn out, boredom, or the collective wounds of many years of practice in today's complicated world.

## S. Musical Assessment of Gerontologic Needs and Treatment (The MAGNET Survey): Introducing a Music Therapy Specific Assessment Tool

*Presenter(s): Roberta S. Adler, MT-BC*

MAGNET is an aggregate of nineteen music therapy assessment tools and contains 112 items in categories required by AMTA Standards of Clinical Practice. Training will cover development and use of music therapy assessment tools for all populations, assessment components, study, and direct practice in administering the assessment, documentation and treatment planning and third party reimbursement issues.



# CMTE COURSES

## **T. How to Integrate Research into your Clinical Practice: Quantitative and Qualitative Perspectives**

*Presenter(s): Michele Forinash, DA, LMHC, MT-BC; Suzanne B. Hanser, EdD, MT-BC*

This CMTE will provide attendees with various research protocols that can be applied to their current clinical music therapy practice. Both quantitative and qualitative research methods will be presented in detail. Participants are asked to bring topics, ideas, and burning questions that they would like to research. They will have the opportunity to discuss these ideas and brainstorm various research approaches they might use.

## **U. Music and Relaxation Strategies for the Music Therapist**

*Presenter(s): Debra S. Burns, PhD, FAMI, MT-BC; Nicki S. Cohen, PhD, FAMI, MT-BC*

In the current climate of managed health care and preventative services, knowledge of music relaxation strategies is paramount for the music therapist. This experiential workshop will explore relaxation techniques, music and relaxation research, functions of music in relaxation, strategies for leading relaxation sessions, musical considerations, contraindications, and modified techniques.

**November 3, 2002**  
**7:00 am - 12:00 pm**

## **V. The Use of Music in Trauma: Caring for the Caregiver**

*Presenter(s): Frank X. Bosco, MT-BC; Susan H. Feiner, MA, MT-BC; Andrea Frisch Hara, MA, MT-BC; Kate Richards Geller, MA, MT-BC; Joanne Loewy, DA, MT-BC; Judi F. Rubin-Bosco, MT-BC; Kristen Stewart; Alan M. Turry, MA, MT-BC*

This course will provide participants with an understanding of trauma and the effects that fear and anxiety have upon communities in the face of disaster. The work presented will be both experiential and educative. It is based on the training of a core team of nine music therapists, all of whom participated in an intensive, music therapy trauma training called Caring for the Caregiver which



occurred at Beth Israel Medical Center after 9-11. This training, which occurred through commitment from AMTA, reached victims and caregivers through music experientials and trauma education. Participants will learn about music therapy techniques related to the impact of trauma such as how music affects the physiology of the trauma response and how channels of trust amidst fear and mistrust amongst communities can be opened through music therapy. 'Caregivers' includes both professionals and individuals personally affected by trauma. Emphasis is placed on how these two groups interface and how we, as music therapists must take care of ourselves in order to effectively take care of others. Uses of storysong, analytic music therapy, rounding, improvisation, song sensitization and toning, as well as other options will be experienced. The impact that music therapy can hold in the face of terror for both caregivers and victims will be emphasized.

**November 3, 2002**  
**2:00 pm - 7:00 pm**

## **W. Reimbursement Facts from A to W**

*Presenter(s): Judy Simpson, MHP, MT-BC*

How do you define active treatment? What are waivers? If you are looking for the answers to these reimbursement questions and everything in-between, then this course is for you. Come learn about healthcare financing to enhance your practice and prepare you to answer the nagging question, "Can music therapy be reimbursed?"

## **X. Songwriting, CDs and Success**

*Presenter(s): Jana Stanfield*

This workshop will explore the do's and don'ts of writing a great song, how to make your own CDs, and finding success in the music business by marketing and selling your music. It is intended for music therapists to use the knowledge gained with their client groups, as well as to nurture their own individual musical talent. Reliable resources for further information will be provided.

## **Y. Action Research: A Clinician's Tool**

*Presenter(s): Colleen Conway, EdD; David W. Luce, PhD, MT-BC*

Music therapists are directly involved with clients and consistently evaluate therapeutic process to inform their clinical practice. Yet, these experiences are too often unreported in the literature. Clinicians will learn how to use and develop action research methods for strategic planning, program advocacy, and to enhance clinical practice.

## **Z. The Art of Creative Perception: Applications of the Three Assessment Scales in Nordoff-Robbins Music Therapy**

*Presenter(s): Kenneth S. Aigen, DA, MT-BC; Clive E. Robbins, DHL, DMM, MT-BC*

In the Nordoff-Robbins approach, developing the ability to listen creatively to a client's musical expression is an essential part of being able to create music with the client. The ability to listen can be developed through learning how to apply the three assessment scales that have evolved from the practice of Creative Music Therapy: Client-Therapist Relationship in Music Activity, Musical Communicativeness, and Musical Response. In this CMTE/presentation attendees will be introduced to theory, origins, and applications of these three scales and have the opportunity to use the scales in practice as they listen to and view audio and videotapes of music therapy sessions.



# MEETING SCHEDULE

## Tuesday October 29, 2002

3:00 - 9:00 pm ..... AMTA Executive Board

## Wednesday October 30, 2002

8:00 am - 3:00 pm ..... AMTA Executive Board  
 8:00 am - 6:00 pm ..... Clinical Training  
 8:00 am - 6:00 pm ..... Education  
 2:00 - 6:00 pm ..... Professional Advocacy  
 3:00 - 4:00 pm ..... Joint Education and Clinical Training  
 4:00 - 7:00 pm ..... AMTAS Officers  
 5:30 - 9:30 pm ..... Standard and Special Target Populations  
 7:00 - 9:00 pm ..... Council Coordinators and Committee Chairs  
 7:00 - 10:00 pm ..... Ethics Board  
 7:00 - 10:00 pm ..... AMTAS Executive Board  
 7:00 - 10:00 pm ..... Regional Presidents

## Thursday October 31, 2002

8:00 - 10:00 am ..... AMTA Executive Board  
 8:00 am - Noon ..... Education  
 8:00 am - Noon ..... Employment and Public Relations  
 8:00 am - Noon ..... Standards and Special Target Populations  
 8:00 am - Noon ..... Affiliate Relations  
 8:00 am - Noon ..... Professional Advocacy  
 8:00 am - Noon ..... Government Relations  
 8:30 am - 12:30 pm ..... SAAB  
 9:00 - 11:00 am ..... International Relations  
 9:00 am - Noon ..... Ethics Board  
 10:00 am - Noon ..... Regional Presidents  
 10:00 am - Noon ..... Continuing Education  
 11:00 am - Noon ..... Education, Clinical Training, International  
 12:45 - 2:00 pm ..... Research  
 1:30 - 5:30 pm ..... Assembly of Delegates  
 3:00 - 5:00 pm ..... AMTAS Executive Board  
 5:30 - 6:30 pm ..... *Music Therapy Perspectives* Editorial Board  
 5:30 - 7:00 pm ..... Regional Executive Board - New England  
 5:30 - 7:00 pm ..... Regional Executive Board - Great Lakes  
 5:30 - 7:00 pm ..... Regional Executive Board - Mid-Atlantic  
 5:30 - 7:00 pm ..... Regional Executive Board - Midwestern

5:30 - 7:00 pm ..... Regional Executive Board - Southeastern  
 5:30 - 7:00 pm ..... Regional Executive Board - South Central  
 5:30 - 7:00 pm ..... Regional Executive Board - Southwestern  
 5:30 - 7:00 pm ..... Regional Executive Board - Western

## Friday November 1, 2002

7:30 - 9:30 am ..... Assembly of Delegates  
 11:00 am - 1:30 pm ..... Special Target Populations Networking Session  
 12:15 - 1:30 pm ..... Reimbursement Task Force  
 12:15 - 1:30 pm ..... Affiliate Relations  
 12:15 - 1:30 pm ..... Continuing Education  
 12:15 - 1:30 pm ..... Judicial Review Board  
 12:15 - 1:30 pm ..... Employment and Public Relations  
 12:15 - 1:30 pm ..... Ethics Board  
 12:15 - 1:30 pm ..... International Relations  
 12:15 - 1:30 pm ..... Professional Advocacy  
 12:15 - 1:30 pm ..... Journal of Music Therapy Editorial Board  
 5:00 - 6:00 pm ..... AMTA Business  
 5:00 - 6:30 pm ..... AMTAS Business

## Saturday November 2, 2002

8:00 - 9:15 am ..... Regional Business - New England  
 8:00 - 9:15 am ..... Regional Business - Great Lakes  
 8:00 - 9:15 am ..... Regional Business - Mid-Atlantic  
 8:00 - 9:15 am ..... Regional Business - Midwestern  
 8:00 - 9:15 am ..... Regional Business - Southeastern  
 8:00 - 9:15 am ..... Regional Business - South Central  
 8:00 - 9:15 am ..... Regional Business - Southwestern  
 8:00 - 9:15 am ..... Regional Business - Western  
 9:30 - 11:00 am ..... AMTA Executive Board  
 11:15 am - 1:15 pm ..... Assembly of Delegates  
 5:30 - 6:30 pm ..... AMTA Business  
 5:30 - 6:30 pm ..... AMTAS Business

## Sunday November 3, 2002

9:45 - 11:30 am ..... AMTA Executive Board

# SESSION SCHEDULE

## Monday, October 28

9:00 am - 7:00 pm

BOARD

### Guided Imagery and Music: Level I Training

Presenter(s): Kenneth Bruscia, PhD, MT-BC

Pre-approval, pre-registration and fee required.

Contact: Kenneth Bruscia, PhD, MT-BC, 6935 Scotforth Rd., Philadelphia, PA 19119

8:00 am - 3:00 pm

GRAND SALON C

### Institute: Innovative Business Strategies in the Music Therapy Marketplace

Presenter(s): Steve Bloom; Michelle Lazar, MT-BC; Genavieve S. Lundblad, MT-BC; Barbara L. Reuer, PhD, MT-BC; Margaret A. Roesch, MT-BC; Julie Romeo; Judy Simpson, MHP, MT-BC; Amber S. Weldon-Stephens, Ed.S, MT-BC

Pre-registration and fee required

Contact: Judy Simpson, MHP, MT-BC, 8455 Colesville Rd., Ste. 1000, Silver Spring, MD 20910

3:30 pm - 10:30 pm

GRAND SALON C

### Institute: Music Therapy in Pediatric Healthcare: Research and Best Practice Methods

Presenter(s): Deanna Hanson Abromeit, MA, MT-BC; Debra S. Burns, PhD, FAMI, MT-BC; Alicia A. Clair, PhD, MT-BC; Allison G. Ebberts, MME, MT-BC; Michele M. Erich, MM, MT-BC; Ann Hannan, MT-BC; Russell E. Hilliard, PhD, MT-BC; Sarah B. Johnson, MM, MT-BC; Robert Krout, EdD, MT-BC; Deforia Lane, PhD, MT-BC; Sheri L. Robb, PhD, MT-BC; Jayne M. Standley, PhD, MT-BC; Janice W. Stouffer, MT-BC; Christine M. Tuden, MS, MT-BC; Darcy Walworth, MM, MT-BC; Jennifer Whipple, MM, MT-BC

Pre-registration and fee required

Contact: Sheri L. Robb, PhD, MT-BC, 5005 W. 73rd Street, Prairie Village, KS 66208

## Tuesday, October 29

9:00 am - 7:00 pm

BOARD

### Guided Imagery and Music: Level I Training (con't)

3:00 pm - 9:00 pm

ADAMS

### AMTA Executive Board

7:00 pm - 9:00 pm

LOBBY REGISTRATION

### Registration

8:00 am - 6:00 pm

COUNCIL

### Clinical Training Committee

8:00 am - 6:00 pm

EMBASSY

### Education Committee

1:00 pm - 5:00 pm

LOBBY REGISTRATION

### Registration

2:00 pm - 6:00 pm

DIRECTORS

### Professional Advocacy Committee

3:00 pm - 4:00 pm

COUNCIL

### Joint Education and Clinical Training Committees

3:30 pm - 10:30 pm

GRAND SALON A

### Institute: Addressing Cultural Complexities in Music Therapy Practice

Presenter(s): Kristen M. Cole, MM, MT-BC; Carolyn Koebel, MT-BC; Margie Rodriguez Le Sage, PhD, LMSW; Frederick C. Tims, PhD, MT-BC

Pre-registration and fee required

Contact: Frederick C. Tims, PhD, MT-BC, 1987 Valleybrook Drive, Okemos, MI 48864

3:30 pm - 10:30 pm

NEWTON

### Institute: When Music Therapy Meets Disaster Relief

Presenter(s): Ronald M. Borczon, MM, MT-BC; Frank X. Bosco, MT-BC; Andrea Frisch Hara, MA, MT-BC; Kate Richards Geller, MA, MT-BC; Garv Hara, MA, CGP, MT-BC; Joanne Loewy, DA, MT-BC; Tamara W. Zavislan, MMGT, MT-BC

Pre-registration and fee required

Contact: Andrea Frisch Hara, MA, MT-BC, 530 E 83rd Street #5W, New York, NY 10028-7298

4:00 pm - 7:00 pm

FULTON

### AMTAS Officers

5:30 pm - 9:30 pm

COBB

### Standards and Special Target Populations Committee

7:00 pm - 9:00 pm

CLAYTON

### Council Coordinators and Committee Chairs

7:00 pm - 10:00 pm

FULTON

### AMTAS Executive Board

## Wednesday, October 30

7:00 am - 11:30 am

LOBBY REGISTRATION

### Registration

8:00 am - 3:00 pm

ADAMS

### AMTA Executive Board

9:00 am - 7:00 pm

BOARD

### Guided Imagery and Music: Level I Training (con't)



# SESSION SCHEDULE

7:00 pm - 10:00 pm

DOUGLAS

## Ethics Board

7:00 pm - 10:00 pm

PAULDING

## Regional Presidents

### Thursday, October 31

7:00 am - 11:30 am

LOBBY REGISTRATION

## Registration

7:30 am - 12:30 pm

GRAND SALON A

### CMTE A. Raise the Bar: Challenging Clients with Developmental Disabilities to Reach their Potential

Presenter(s): Ruthlee F. Adler, MT-BC; Catherine D. Knoll, MT-BC

Two experienced clinicians will share a wealth of music therapy strategies designed to challenge children and adults with developmental disabilities to stretch toward their potential. Target skills include communication, perceptual-motor, functional daily living, social interaction, as well as the ability to make music with others and for their own enjoyment.

Pre-registration and fee required.

Contact: Catherine D. Knoll, MT-BC, 1250 Ollie Street, Stephenville, TX 76401

7:30 am - 12:30 pm

NEWTON

### CMTE B. Oh Banjo, Where Art Thou? A Banjo Experiential

Presenter(s): Robert Groene, II, PhD, MT-BC

This workshop/experiential will cover the history, styles, and basics of the 5-string banjo. Banjos will be available for use. We will try several of the different styles of banjo, including

clawhammer, frailing, melodic, and bluegrass. Implications for music therapy will be discussed.

Pre-registration and fee required.

Contact: Robert Groene, II, PhD, MT-BC, Univer of Missouri-Kansas City, 4949 Cherry St., 316 Grant Hall, Kansas City, MO 64110-2229

7:30 am - 12:30 pm

GRAND SALON E

### CMTE C. Awakening the Body from Trauma: Interventions with Music and Movement

Presenter(s): Carolyn Braddock, MA

Participants will learn the three embodiments of trauma: rigid, collapsed, and inanimate, each with their own respective breath, sound and movement patterns. Music and movement will be used to gather information about trauma, observing the three dimensional body. Specific intervention strategies will be demonstrated, with music, to balance the body, mind and spirit.

Pre-registration and fee required.

Contact: Carolyn Braddock, MA, P.O. Box 260123, Lakewood, CO 80226

7:30 am - 12:30 pm

FORSYTHE

### CMTE D. Basic Blues: Blues Guitar Accompaniment Skills

Presenter(s): Robert E. Jordan, Jr., MA, MT-BC

This course is designed to increase and enrich basic blues guitar accompaniment skills. It includes discussion/demonstration of blues form and feel, picking patterns for blues, basic blues chord vocabulary, some basic blues fills and turnarounds, and blues boogie patterns.

Pre-registration and fee required.

Contact: Robert E. Jordan, Jr., MA, MT-BC, 201 Preston Road, Flourtown, PA 19031

7:30 am - 12:30 pm

HENRY

### CMTE E. Singin' and Swingin': An Exploration of Gospel Music Style for the Music Therapist

Presenter(s): Donna Cox, PhD

Gospel music is a dramatic, highly expressive music, capable of reaching deep into the hearts and souls of both listeners and performers. The improvisational nature of the music encourages

spontaneous involvement, manifested through hand clapping, foot stomping, finger popping, bodily movements, dance, and verbal and nonverbal interjections. In the session, participants will actively explore the spontaneously improvised songs, folk spirituals, and other "black church songs" associated with this vital American genre.

Pre-registration and fee required.

Contact: Donna Cox, PhD, 1124 Harvard Boulevard, Dayton, OH 45406

7:30 am - 12:30 pm

COUNCIL

### CMTE F. Continuing Education - Making the Most of Your Investment

Presenter(s): Nancy A. Hadsell, PhD, MT-BC

This presentation focuses on assisting new and seasoned MT-BCs with managing their continuing education programs. It focuses on (a) understanding the options for continuing education; (b) deciding on content areas for education; (c) planning a cohesive education program; and (d) maximizing the benefits accrued from the dollars invested.

Pre-registration and fee required.

Contact: Nancy A. Hadsell, PhD, MT-BC, 2427 Foxcroft Circle, Denton, TX 76209-1533

7:30 am - 12:30 pm

CABINET

### CMTE G. Music Therapy Anger Management: Bombardment of Session Plan Ideas and a Database

Presenter(s): Thea Morton; Lee Anna Rasar, MME, WMTR, MT-BC; Amy M. Ray

Five years of session plans that were used successfully with inmates behind bars will be presented by topics and themes. A database of these session plans, including responses of inmates and lists of songs, songbooks, CDs, and videotapes relating to anger management, will be included on CD-ROM.

Pre-registration and fee required.

Contact: Lee Anna Rasar, MME, WMTR, MT-BC, 2621 Winsor Drive, Eau Claire, WI 54703-1778

# SESSION SCHEDULE

7:30 am - 12:30 pm

DIRECTORS

## CMTE H. Internship Director Training

Presenter(s): Mavis N. Mahlberg, MA, MT-BC, and members of the Clinical Training Committee

This course reviews the National Roster Internship Guidelines and application process, the AMTA Professional Competencies as a foundation for training, and basic supervisory strategies. It fulfills the supervision training requirement for the National Roster Internship Directors, but is open and applicable to all music therapy internship supervisors.

Pre-registration and fee required.

Contact: Mavis N. Mahlberg, MA, MT-BC, 3618 Wyoming #3, Kansas City, MO 64111

7:30 am - 12:30 pm

EMBASSY

## CMTE I. Music and Soulmaking: Theory of Music Therapy Practice Based on Complexity Science

Presenter(s): Barbara J. Crowe, MM, MT-BC

This presentation will introduce a theoretical model of music therapy practice based on the principles of Complexity Science and make a case for its use in investigation music therapy process. Complexity Science is a widely recognized scientific approach that emphasizes wholeness as opposed to reductionism and the non-linear influence of variables as opposed to linear cause and effect.

Pre-registration and fee required.

Contact: Barbara J. Crowe, MM, MT-BC, Arizona State University, School of Music Box 870405, Tempe, AZ 85287-0405

7:30 am - 12:30 pm

CARTER

## CMTE J. Applied Professional Percussion Techniques in Clinical Practice

Presenter(s): Vaughn A. Kaser, MCAT, MT-BC

Presenter: Susan M. Jette, MT-BC

Those attending this presentation will be given instruction on how to play the main latin percussion instruments (congas, bongos, and timbales) and the drum set. Methods for applying this knowledge to a music therapy group setting

will also be discussed. Emphasis will be given to a forensic/psychiatric population.

Pre-registration and fee required.

Contact: Vaughn A. Kaser, MCAT, MT-BC, 1821 Sunny Hill, Los Osos, CA 93402

7:30 am - 12:30 pm

GRAND SALON C

## K. Making Sense of the Results Section: A Guide to Basic Statistics for Music Therapists

Presenter(s): Mike D. Brownell, MME, MT-BC; Claire M. Ghatti, MME, MT-BC

Research in music therapy is vital for the development of the profession. Comprehension of research methods enables one to garner the most from such research. This painless exploration of statistical methods will introduce research design and enable participants to interpret statistics found in journals such as the Journal of Music Therapy.

Pre-registration and fee required.

Contact: Mike D. Brownell, MME, MT-BC, 1238 Horseshoe Circle, #105, Ann Arbor, MI 48108

8:00 am - 10:00 am

ADAMS

## AMTA Executive Board

8:00 am - 12:00 pm

DOUGLAS

## Affiliate Relations Committee

8:00 am - 12:00 pm

FULTON

## Education Committee

8:00 am - 12:00 pm

COBB

## Employment and Public Relations Committee

8:00 am - 12:00 pm

WINNETT

## Government Relations Committee

8:00 am - 12:00 pm

PAULDING

## Professional Advocacy Committee

8:00 am - 12:00 pm

CLAYTON

## Standards and Special Target Populations Committee

8:30 am - 12:30 pm

DEKALB

## Student Affairs Advisory Board

9:00 am - 7:00 pm

BOARD

## Guided Imagery and Music: Level I Training (con't)

9:00 am - 11:00 am

FAYETTE

## International Relations Committee

9:00 am - 12:00 pm

CHEROKEE

## Ethics Board

10:00 am - 12:00 pm

WALTON

## Continuing Education Committee

10:00 am - 12:00 pm

ADAMS

## Regional Presidents

11:00 am - 12:00 pm

FULTON

## Joint Education, Clinical Training and International Relations Committees

12:00 pm - 2:00 pm

PRE-FUNCTION AREA

## Cash Lunch

# SESSION SCHEDULE

12:45 pm - 2:00 pm

ADAMS

## Research Committee

1:00 pm - 5:00 pm

LOBBY REGISTRATION

## Registration

1:30 pm - 5:30 pm

GRAND SALON D

## Assembly of Delegates

1:30 pm - 6:30 pm

GRAND SALON A

## CMTE L. The Harmonious Pair: Sensory Integration and Music Therapy

Presenter(s): Aubrey Lande, MS, OTR

This course will provide an overview of sensory integration theory and treatment. The presenter will share the results of her clinical experience with effective and purposeful use of music as a movement and integration facilitator and as a diagnostic and treatment protocol for children with autism.

Pre-registration and fee required.

Contact: Aubrey Lande, MS, OTR, c/o Kirsten Nelson, West Music Co., 1212 5th St., Coralville, IA 52241

1:30 pm - 6:30 pm

FORSYTHE

## CMTE M. Hip Guitar Skills for Music Therapists

Presenter(s): Robert Krout, EdD, MT-BC

This workshop is designed to teach music therapy clinicians hands-on contemporary guitar skills for inclusion in their work, with emphasis on hip chords, strums, progressions, stylistic embellishments, simple leads, songs, and improvisation skills in rock and blues styles. The emphasis is on developing contemporary guitar skills that will allow the therapist to be truly creative in how they use guitar in their work. We will also explore melodic and rhythmic improvisation.

Pre-registration and fee required.

Contact: Robert Krout, EdD, MT-BC, Music Therapy Programme, Conservatorium of Music, Massey Univ., Mt. Cook, Wellington, NEW ZEALAND

1:30 pm - 6:30 pm

CARTER

## CMTE N. The World of Drumming - An Overview of Technique and Rhythmical Skill Development for Music Therapists

Presenter(s): John Scalici, Christine Stevens, MSW, MT-BC

This course will cover world percussion instruments and the art of spoken syllables to develop a sense of rhythm. Drums will include frame drum, tabla, conga, djembe, tambourine, talking drum, bongos, and others.

Pre-registration and fee required.

Contact: Christine Stevens, MSW, MT-BC, 28101 Industry Drive, Valencia, CA 91355

1:30 pm - 6:30 pm

COUNCIL

## CMTE O. Beginning Spanish for the Music Therapist

Presenter(s): Elsa Maria Garcia, MT-BC; Jennifer Rathbun, MM, MT-BC

This experiential presentation is intended for those who speak minimal to no Spanish. After reviewing pronunciation, vocabulary, and common phrases, participants will role-play sessions in simple Spanish. They will also learn to sing and play four popular Spanish folk songs. Participants will leave with excellent resources and increased confidence.

Pre-registration and fee required.

Contact: Jennifer Rathbun, MM, MT-BC, 3315 Shadowchase Drive, Houston, TX 77082-2351

1:30 pm - 6:30 pm

HENRY

## CMTE P. Training in Group Clinical Improvisation as a Music Psychotherapy Methodology

Presenter(s): Susan C. Gardstrom, MA, MT-BC; James M. Hiller, MMT, MT-BC

This clinical improvisation training is designed to provide music therapists with basic knowledge and skills for addressing clients' psychotherapeutic needs in a group setting. Through experiential and didactic engagement, participants will learn essential processes and structures for designing and guiding effective group clinical improvisation experiences.

Pre-registration and fee required.

Contact: James M. Hiller, MMT, MT-BC, 300 College Park Ave., Dayton, OH 45469-0290

1:30 pm - 6:30 pm

NEWTON

## CMTE Q. Singing: A Professional and Personal Need

Presenter(s): Kate Richards Geller, MA, MT-BC; Sylka Uhlig, MA, RMTh

Singing is a powerful and effective music therapy tool. This experiential workshop explores intra and interpersonal dimensions of our primary instrument, voice. Participants are invited into a process of personal awareness of their own voices and professional discussion about the impact of singing in a variety of clinical settings.

Pre-registration and fee required.

Contact: Kate Richards Geller, MA, MT-BC, 366 Broadway #7B, New York, NY 10013

1:30 pm - 6:30 pm

GRAND SALON B

## CMTE R. Secondary Traumatic Stress Symptoms, Healing the Healer's Spirit; Recovery and Renewal

Presenter(s): Trudy Shulman Fagen, LMHC, ACMT

=This workshop for very experienced clinicians, uses intermodal therapies (music, art, psychodrama, and movement), imagery and altered state methodology (imagery techniques, hypnosis and focusing) to provide a forum for exploring transferential dynamics and supervision in recovering from secondary trauma. Music improvisation, imaging, songwriting, visual art and movement techniques will facilitate renewal and self growth for therapists who are struggling with burn out, boredom, or the collective wounds of many years of practice in today's complicated world.

Pre-registration and fee required.

Contact: Trudy Shulman Fagen, LMHC, ACMT, 57 Upland Rd., Waban, MA 02468



# SESSION SCHEDULE

1:30 pm - 6:30 pm

CABINET

## CMTE S. Musical Assessment of Gerontologic Needs and Treatment (The MAGNET Survey): Introducing a Music Therapy Specific Assessment Tool

Presenter(s): Roberta S. Adler, MT-BC

MAGNET is an aggregate of nineteen music therapy assessment tools and contains 112 items in categories required by AMTA Standards of Clinical Practice. Training will cover development and use of music therapy assessment tools for all populations, assessment components, study, and direct practice in administering the assessment, documentation and treatment planning and third party reimbursement issues.

Pre-registration and fee required.

Contact: Roberta S. Adler, MT-BC, 13171 Coleman Place, Garden Grove, CA 92843-1217

1:30 pm - 6:30 pm

EMBASSY

## CMTE T. How to Integrate Research into your Clinical Practice: Quantitative and Qualitative Perspectives

Presenter(s): Michele Forinash, DA, LMHC, MT-BC; Suzanne B. Hanser, EdD, MT-BC

This CMTE will provide attendees with various research protocols that can be applied to their current clinical music therapy practice. Both quantitative and qualitative research methods will be presented in detail. Participants are asked to bring topics, ideas, and burning questions that they would like to research. They will have the opportunity to discuss these ideas and brainstorm various research approaches they might use.

Pre-registration and fee required.

Contact: Michele Forinash, DA, LMHC, MT-BC, 53 Silver Hill Rd, Concord, MA 01742-5333



1:30 pm - 6:30 pm

DIRECTORS

## CMTE U. Music and Relaxation Strategies for the Music Therapist

Presenter(s): Debra S. Burns, PhD, FAMI, MT-BC; Nicki S. Cohen, PhD, FAMI, MT-BC

In the current climate of managed health care and preventative services, knowledge of music relaxation strategies is paramount for the music therapist. This experiential workshop will explore relaxation techniques, music and relaxation research, functions of music in relaxation, strategies for leading relaxation sessions, musical considerations, contraindications, and modified techniques.

Pre-registration and fee required.

Contact: Nicki S. Cohen, PhD, FAMI, MT-BC, 1505 Laurelwood Drive, Denton, TX 76209

2:30 pm - 5:00 pm

EXHIBIT HALL

## Exhibits

3:00 pm - 5:00 pm

COBB

## AMTAS Executive Board

5:30 pm - 6:30 pm

ADAMS

## Music Therapy Perspectives Editorial Board

5:30 pm - 7:00 pm

## Regional Executive Board Meetings

FAYETTE - Western Region  
 GWINNETT - Southwestern Region  
 DEKALB - South Central Region  
 PAULDING - Southeastern Region  
 DOUGLAS - Midwestern Region  
 CLAYTON - Mid-Atlantic Region  
 COBB - Great Lakes Region  
 FULTON - New England Region

7:30 pm - 9:30 pm

GRAND BALLROOM

## Opening Session

9:30 pm - 11:00 pm

EXHIBIT HALL

## Exhibit Hall Grand Opening. Silent Auction and Masquerade Reception

11:30 pm - 2:00 am

GRAND SALON E

## Jam Room

11:30 pm - 2:00 am

WALTON

## Jam Room

11:30 pm - 2:00 am

FAYETTE

## Jam Room

**Friday,  
November 1**

6:30 am - 8:30 am

PRE-FUNCTION AREA

## Cash Breakfast

7:00 am - 8:00 am

ADAMS

## Networking Breakfasts

International Relations  
 Disaster Relief  
 Forensic/Corrections  
 Special Education  
 Music Therapy Education  
 Developmental Disabilities  
 General Medical  
 Rehabilitation (Neuro)  
 Self Employment  
 Substance Abuse  
 Mental Health  
 Geriatrics

7:00 am - 11:30 am

LOBBY REGISTRATION

## Registration

# SESSION SCHEDULE

7:30 am - 9:30 am

GRAND SALON D

## Assembly of Delegates

8:00 am - 9:30 am

DEKALB/GWINNETT

## A Model for Client Assessment in Music Therapy Practicum and Internship Training

Presenter(s): Kristen M. Cole, MM, MT-BC; Julie Kopf; Erin Nicholas

Presenter: Corey Elliot

Music therapy assessment is important in undergraduate and internship training. It is increasingly required for insurance reimbursement and funding. This presentation will highlight a model of client assessment for use in clinical practicum and internship training. Specific case examples will be explained by former students who used the model in their training. Implications for use in undergraduate and intern training programs will be discussed.

Contact: Kristen M. Cole, MM, MT-BC, 905-6th Avenue South, Apt. 11, Columbus, MS 39701

Recorded

Level: Professional, Entry, Student

8:00 am - 9:30 am

DOUGLAS/PAULDING

## Bringing Lives to Closure

Presenter(s): Marian D. Palmer, ACC, RMT

Presenter: Louise E. Lynch, MA, MT-BC

This workshop is for those who want to assist their clients or loved ones by bringing lives to closure with dignity. Participants are introduced to specific techniques designed to facilitate meaningful interactions. Techniques that assist in dealing effectively with the many losses that occur during our lives such as divorce, separation, job changes, retirement, and debilitating illness will also be explored.

Contact: Marian D. Palmer, ACC, RMT, 340 Holly Hill Road, Oldsmar, FL 34677

Level: Professional, Entry



8:00 am - 9:30 am

CLAYTON

## Developing the Musical Self of the Music Therapy Student

Presenter(s): Brian Abrams, PhD, FAMI, MT-BC; Julie A. Abrams, MMT, MT-BC

Presenter: Bryan J. Muller, MMT, MT-BC

This workshop will explore the significance of cultivating one's unique relationship with music (and the various ways of participating in it) as a vital part of a music therapy education. Explore the significance of developing the musical self through discussion and live, interactive music experiences. Music therapy students, interns, clinical supervisors and educators are encouraged to attend.

Contact: Brian Abrams, PhD, FAMI, MT-BC, 11 North A St., Apt. #41, Salt Lake City, UT 84111

Recorded

Level: Student

8:00 am - 9:30 am

CHEROKEE

## Growing with Infants and Toddlers with Special Needs Through Music

Presenter(s): Rachel Bruschi; Shu M. Che, MT-BC

A growing child requires more than milk, diaper changes, and Barney. Participants in this hands-on workshop will acquire an understanding of the five developmental domains with corresponding activities. Each activity will be modified to address the age, diagnosis, and current level of functioning for the child.

Contact: Shu M. Che, MT-BC, 6679 Angels Lane, Tucker, GA 30084

Recorded

Level: Entry

8:00 am - 9:30 am

WALTON

## Integrating Music Therapy Practices with Applications of Color, Breath and Energy

Presenter(s): Sharron Szabo, MA, MT-BC

Presenter: Susan Hess, MA, MT-BC

Many ancient and indigenous cultures and traditions embrace the innate healing properties of sound and music. Such cultures naturally integrate these healing properties with those of color, breath, and energy. Gain a better

understanding of the healing and therapeutic relationships between sound, music, color, and breath as well as a more comprehensive perspective on the potential resources that can be explored, developed and assessed in music therapy practices.

Contact: Sharron Szabo, MA, 3642 Larkwood Ct., Boulder, CO 80304

Level: Professional

8:00 am - 9:30 am

FULTON/Cobb

## Music Therapy in Harm Reduction for Adult Substance Users with HIV/AIDS

Presenter(s): Claire M. Ghetti, MME, MT-BC

Harm Reduction, a public health alternative to the moral/criminal and disease models of drug use and addiction, offers a practical and empowering alternative to the abstinence-only approaches of treating substance users. This session presents an overview of Harm Reduction and develops a model for using music therapy within this approach. Forming appropriate therapeutic goals and interventions, managing challenging client behaviors and avoiding burnout will be addressed.

Contact: Claire M. Ghetti, MME, MT-BC, 174 Thompson Street, Apt. 3FS, New York, NY 10012

Recorded

Level: Professional

8:00 am - 9:30 am

FAYETTE/Newton

## Music Therapy on an Adult In-Patient Oncology Unit

Presenter(s): Leslie D. Meadows, MT-BC

Presenter: Courtney Brez, MM, MT-BC

The presenter will discuss current research conducted at the Ireland Cancer Center with adult autologous stem cell transplant patients, as well as clinical work with other oncology patients. Discussion will include relevant important therapeutic considerations with a focus on assessment, intervention planning, evaluation and documentation.

Contact: Leslie D. Meadows, MT-BC, 3552 Hunting Run Road, Medina, OH 44256

Level: Entry

# SESSION SCHEDULE

8:00 am - 9:30 am

GRAND SALON C

## Music Therapy, Stress, Immunity and Health: A Review of MT-PNI Research

Presenter(s): Therese Marie West, MM, MT-BC

Presenter: Cathy McKinney, PhD, MT-BC

What claims can we actually make about music's ability to beneficially impact the immune system based upon research? This presentation introduces basic concepts and methods from the multi-disciplinary field, psychoneuroimmunology (PNI), to provide an appreciation for significant limitations we face when interpreting or applying existing research in this area as well as a sound scientific framework for investigating the music to mind-body connection.

Contact: Therese Marie West, MM, MT-BC, 9305 S.W. 77th Avenue #436, Miami, FL 33156

Recorded

Level: Professional

8:00 am - 9:30 am

GRAND SALON E

## Overcoming Barriers in Everyday Living: Applications of the Therapeutic Uses of Music

Presenter(s): Daniel Craig, MA, OTR/L

This workshop explores the innovative uses of music in work, self-care and leisure activities of daily living. It addresses the common barriers/challenges in everyday life, with interventions and recommendations for meeting needs. Discussion will focus on making an observable impact on the day-to-day lives of a clinical or well population by addressing daily function with music.

Contact: Daniel Craig, MA, OTR/L, Performing Arts PT and OT, 145 Warren St., #1, Medford, MA 02155

Recorded

Level: Student

8:00 am - 9:30 am

GRAND SALON B

## Research Committee Presents: Music Therapy and Augmentative Communication: Creating a Research Base

Presenter(s): Betsy King Brunk, MMT, MT-BC

This presentation will review the literature and highlight several areas in which there are

opportunities for music therapists to conduct quantitative and qualitative research. Music therapists who use and interact with AAC in their practices are encouraged to attend.

Contact: Clifford Madsen, PhD, Florida State University, School of Music, Tallahassee, FL 32306

8:00 am - 9:30 am

CARTER

## Research of Senile Dementia in Japan - Use of Akaboshi Music Therapy Method (Ryouiku Ongaku) and Information Technology (TV session) - First Stage

Presenter(s): Takako Akaboshi; Takehiko Akaboshi; Hidetoshi Endo, MD, PhD; Satoko Mori-Inoue, MMT, RMT

Presenter: Barbara L. Reuer, PhD, MT-BC

This presentation will reveal research on the efficacy of a combination of music therapy and information technology (television sessions). The Akaboshi Method, which is active, group music therapy, will be explained. This technique is based on establishing group communication, maintaining/enhancing the respiratory system, rehabilitating motor function and stimulating the nervous system.

Contact: Satoko Mori-Inoue, MMT, RMT, 2-17-12 Granmail S. 103, Gakuen-mishimachi, Kodaira-City-Tokyo, JAPAN 187-0045

Recorded

Level: Professional, Entry

8:00 am - 9:30 am

GRAND BALLROOM

## Technology Tools for the Music Therapist: Software and Hardware

Presenter(s): Julie Romeo

Presenter: Amy M. Zang, MT-BC

The future of music tools is here from the Q-chord to the music vibration table. Come and experience some new products available to music therapists and clients. Innovative technology will excite and inspire you to incorporate software, keyboards, and sequencers into your practice.

Contact: Julie Romeo, 8605 John Carpenter Freeway, Dallas, TX 75247

Recorded

Level: Entry

8:00 am - 9:30 am

ROCKDALE/FORSYTHE

## The Music of Me - Considering the Music Improvisation Experience for Music Therapists

Presenter(s): David Kay, MM

Presenter: Lalene D. Kay, MM, ACC, MT-BC

As creative linguistic communication fosters self-knowing, improvised music facilitates direct self-expression that subsequently can generate a powerfully heightened affective sense of self. Workshop discussion and experiences will explore the processes of improvised music and its easy availability to both mentors and clients - regardless of prior experience.

Contact: David Kay, MM, 331 Fair Street, Berea, OH 44017-2305

Recorded

Level: Professional, Entry, Student

8:00 am - 9:30 am

GRAND SALON A

## Using Orff-Schulwerk to Facilitate Support Groups for Children's Bereavement

Presenter(s): Russell E. Hilliard, PhD, LCSW, MT-BC; Dena Register, MM, MT-BC

Presenter: Darcy Walworth, MM, MT-BC

Music therapy bereavement groups are designed to "normalize" grief for children who have experienced the death of a loved one by building rapport, sharing personal experiences and educating individuals about the physiological, social and emotional effects that occur as a result of a loved one's death. This presentation will demonstrate how to create and implement an eight-week music therapy-based support group, including original activities, referral process, and pre/post-assessment of group members.

Contact: Dena Register, MM, MT-BC, 2420 Basswood Ln, Tallahassee, FL 32308-6283

Recorded

Level: Entry





# SESSION SCHEDULE

8:00 am - 9:30 am

HENRY

## **Window to the Soul: Songwriting and Self Discovery**

*Presenter(s): Helen Barba, ATR, CCMHC*

The experience of songwriting can function as a pathway to self-discovery and healing. This presentation will explore the phenomenon through the presenter's own investigative study and interviews conducted with amateur and professional songwriters. Principles from analytical psychology as well as music therapy issues such as clinical applications, assessment, treatment planning and documentation will be discussed.

*Contact: Helen Barba, 14170 Ash Circle NE, Prior Lake, MN 55372*

Level: Entry

9:45 am - 11:00 am

GRAND BALLROOM

## **Reimbursement Plenary Session**

*Presenter: Christopher M. Johnson, PhD*

*Presenter: Judy Simpson, MHP, MT-BC*

Recorded

11:00 am - 2:00 pm

PRE-FUNCTION AREA

## **Cash Lunch**

11:00 am - 1:30 pm

EXHIBIT HALL

## **Exhibit Spectacular**

11:00 am - 1:30 pm

GRAND BALLROOM

## **Special Target Populations Networking Session**

Addictive Disorders/Substance Abuse

Consultant/Private Practice

Developmental Disabilities

Educational Settings

Forensics/Corrections

Geriatric Settings

Medical Settings

Mental Health

Physical Disabilities

Wellness

Early Childhood Roundtable

11:00 am - 5:00 pm

EXHIBIT HALL

## **Exhibits**

12:15 pm - 1:30 pm

MONROE

## **Affiliate Relations Committee**

12:15 pm - 1:30 pm

MADISON

## **Continuing Education Committee**

12:15 pm - 1:30 pm

CLUB

## **Employment and Public Relations Committee**

12:15 pm - 1:30 pm

COUNCIL

## **Ethics Board**

12:15 pm - 1:30 pm

CABINET

## **International Relations Committee**

12:15 pm - 1:30 pm

BOARD

## **Journal of Music Therapy Editorial Board**

12:15 pm - 1:30 pm

JACKSON

## **Judicial Review Board**

12:15 pm - 1:30 pm

EMBASSY

## **Professional Advocacy Committee**

12:15 pm - 1:30 pm

ROOSEVELT

## **Reimbursement Task Force**

1:00 pm - 5:00 pm

LOBBY REGISTRATION

## **Registration**

1:30 pm - 3:30 pm

ROCKDALE/FORSYTHE

## **A Way Around the Wall-Music Therapy with Substance Abusers**

*Presenter: Patricia Morrissey-Harthun, MA, CADC, MT-BC*

*Presenter: Ellen B. Rayfield, MT-BC*

This program outlines the "stages of change" model of addiction recovery. It will address how music therapy can impact these various stages and assist in the recovery process. Co-existing psychiatric conditions that need to be considered in treatment will be explored. Examples of music therapy interventions will be included.

*Contact: Patricia Morrissey-Harthun, MA, CADC, MT-BC, 9546 S Hamilton Ave, Chicago, IL 60643-1120*

Recorded

Level: Professional, Entry

1:30 pm - 3:30 pm

CLAYTON

## **Adolescent Pregnancy and Parenting, A Phenomenon in Need of Exploration and Therapeutic Intervention: Implications for the Application of Music Therapy**

*Presenter(s): Jessica L. Shaller, MM, MT-BC*

This presentation will address the various issues associated with adolescent pregnancy and parenting, including chronic depression and stress. A rationale for the application of music therapy will be presented along with treatment outcomes. Demonstration of therapeutic musical interventions applied within this population during clinical work will be discussed.

*Contact: Jessica L. Shaller, MM, MT-BC, 125 Sylvan Court, Fort Collins, CO 80521*

Recorded

Level: Professional

1:30 pm - 3:30 pm

GRAND SALON C

## **Children's Literature and Orff- Schulwerk in the Music Therapy Setting**

*Presenter(s): Cynthia M. Colwell, PhD, MT-BC; Liesel E. Stephens, MT-BC*

*Presenter: Alice-Ann Darrow, PhD, RMT*

Children must be actively engaged in the environment to obtain maximum therapeutic

# SESSION SCHEDULE

benefits from the music therapy session. Combining children's literature with the Orff Schulwerk process enhances the experience. Attendees at this session will actively participate in several applications designed to demonstrate this experience. An extensive reference list will be included in an information packet provided during the session.

Contact: Cynthia M. Colwell, PhD, MT-BC, 2813 Winterbrook Drive, Lawrence, KS 66047

Recorded  
Level: Entry

1:30 pm - 3:30 pm

GRAND SALON E

## Facilitating a Therapeutic Drumming Group for Mothers and Daughters

Presenter(s): Katia Bailetti, BSc; Anne Marie Bourgeois, MA

This workshop is available to both entry and experienced level female professionals with some clinical/group experience. It involves pairing participants into mother/daughter teams who will engage in therapeutic drumming. The therapeutic methodology involves the use of African drums guided by readings pertinent to various themes related to the mother/daughter relationship.

Contact: Anne Marie Bourgeois, MA, Royal Ottawa Health Care Group, 1145 Carllin Ave., Ottawa, ON, CANADA K1Z 7K4

Recorded  
Level: Professional, Entry

1:30 pm - 3:30 pm

HENRY

## Implementing Competency-Based Education

Presenter(s): Darlene Brooks, PhD, FAMI, MT-BC; Kathleen Murphy, MMT, FAMI, MT-BC

Presenter: Douglas R. Keith, MMT, MT-BC

This presentation is an example of the implementation of the new Education and Training Standards. The use of the competencies to structure learning in coursework, practicums and internships will be discussed. Educators and clinical training directors are encouraged to share how they have implemented the new standards.

Contact: Darlene Brooks, PhD, MT-BC, 200 N. Wynnewood Avenue, B208, Wynnewood, PA 19096

Recorded  
Level: Professional

1:30 pm - 3:30 pm

CARTER

## Learning through Sign Language and Song

Presenter(s): Wade M. Richards, MT-BC

At this session, you will learn 10 original songs that assist school-aged children with communication through sign language while working on other therapeutic and educational goals. Song themes include the calendar, locomotor movements, colors, money, numbers, animals, food, and occupations. Make appropriate signing choices based on communication levels and create "sign-sentences" to sequentially introduce signs.

Contact: Wade M. Richards, MT-BC, 58 Parkside Crescent, Rochester, NY 14617

Level: Professional, Entry

1:30 pm - 3:30 pm

GRAND SALON B

## Music Making and Wellness for Mature Adults: A New Therapeutic Idea

Presenter(s): Karl Bruhn; Alicia A. Clair, PhD, MT-BC; Julie Romeo; Mel Wisniewski; Amy M. Zang, MT-BC

Presenter: Kirsten E. Nelson, MT-BC

Active music making is becoming a recognized component for wellness in the 21st century. This panel presentation illustrates the role of music and wellness within the Lowrey Magic Organ Course. A live class is presented for participants to observe. A question/answer session will follow.

Contact: Amy M. Zang, MT-BC, Brook Mays Music Co., 6111 North Beach Street, Apt. 1514, Fort Worth, TX 76137-3812

Recorded  
Level: Entry

1:30 pm - 3:30 pm

FAYETTE/NEWTON

## Neurologic Music Therapy with Children

Presenter(s): Stefanie N. Anderson, MT-BC; Amy A. Thompson, MM, MT-BC; Hope E. Young, MT-BC

Presenter: Karen S. Epps, MM, MT-BC

This presentation will demonstrate the application of Neurologic Music Therapy (NMT) in an outpatient setting with children affected by various neurological disorders. Clinical treatment sessions including adaptations of current NMT

interventions will be demonstrated. A spectrum of client diagnoses will be addressed. Data from current research conducted at The Center for Music Therapy, Inc. will be shown and discussed based on the presenters' clinical experiences using NMT with adults and children.

Contact: Hope E. Young, MT-BC, 4016 Manchaca Road, Austin, TX 78759

Recorded  
Level: Professional

1:30 pm - 3:30 pm

FULTON/COBB

## Positioning and Handling Clients with Disabilities - Concepts and Skills for Music Therapists

Presenter(s): Gene Ann Behrens, PhD, MT-BC

Presenter: James L. Haines, PhD, MT-BC

Music therapists working with clients with mild to severe motor disabilities can benefit from learning how to assist in normalizing clients' muscle tone during music experiences. The presenter will discuss ways to position, transport, and prompt clients with motor needs as well as how to select and adapt instruments based on their needs.

Contact: Gene Ann Behrens, PhD, MT-BC, 4014 Parkside Ct, Mt Joy, PA 17552

Recorded  
Level: Professional, Entry, Student

1:30 pm - 3:30 pm

DOUGLAS/P AULDING

## Side by Side: The Functions of Music in the Formation, Maintenance and Activation of the Therapeutic Relationship

Presenter(s): Terra Merrill, MMT, MTA; Roger A. Smeltekop, MM, MT-BC

Presenter: Rebecca A. Houghton, RMT

This presentation will develop a model of the therapeutic relationship comprised of six fundamental components. The activity of music during and as a result of this relationship will be examined in conjunction with a variety of clinical music therapy models. Together, the participants will explore the application of music and the therapeutic relationship in their own clinical work.

Contact: Roger A. Smeltekop, MM, MT-BC, 814 South Putman, Williamston, MI 48895

Recorded  
Level: Entry

# SESSION SCHEDULE

1:30 pm - 3:30 pm

GRAND SALON A

## **Surviving Suicide: A Perspective on the Role of Music Therapy for Both the Therapist and the Client**

*Presenter(s): Mary A. Scovel, MM, MT-BC*

*Presenter: Marilyn I. Sandness, MM, MT-BC*

This workshop is intended to give voice to the silent suffering of the millions of individuals and families whose lives are impacted by the suicide of their loved ones. Participants will get a sense of the journey through the grieving process and provide insight as to how others can recover from such a tragedy. Throughout the workshop, participants will explore all aspects of the healing process. Come to understand how their fears can become vehicles, rather than barriers, to growth and spiritual transformation.

*Contact: Mary A. Scovel, MM, MT-BC, 77 Port Tack, Hilton Head Island, SC 29928*

Recorded

Level: Professional, Entry

1:30 pm - 3:30 pm

CHEROKEE

## **The Grief Songwriting Process and Grief Process Scale: Applications with Bereaved Adolescents**

*Presenter(s): Thomas A. Dalton, MA, MT-BC; Robert Krout, EdD, MT-BC*

*Presenter: Julie J. Stordahl, MA, MT-BC*

This workshop will introduce a newly developed grief paradigm, the Sea Star Grief Model, and the Grief Songwriting Process which are both designed to assist bereaved adolescents. The Grief Process Scale will also be presented in conjunction with this grief model and treatment process to quantify and evaluate the effectiveness of songwriting interventions.

*Contact: Thomas A. Dalton, MA, MT-BC, 337 Columbia Dr, Lake Worth, FL 33460-6203*

Level: Entry



3:45 pm - 4:45 pm

DOUGLAS/PALDING

## **A "Whad' Ya Know?" Approach to Music Therapy Research**

*Presenter(s): Jennifer D. Jones, MM, MT-BC*

*Presenter: Jennie Purvis Band, PhD, LPC, FAMI, MT-BC*

Articles published in the *Journal of Music Therapy* often appear daunting. Many practicing music therapists feel they do not understand enough about research practices to effectively incorporate them into clinical practice. The presenter's philosophy is that many do not utilize published research in an effective manner. This session seeks to make experimental research publications understandable and affirm the concomitant skills of effective clinicians and researchers.

*Contact: Jennifer D. Jones, MM, MT-BC, 435 Gates Rd, Goodlettsville, TN 37072-2708*

Recorded

Level: Entry

3:45 pm - 4:45 pm

GRAND SALON E

## **Captivated by the Music-Models of Successful Parent-Toddler Music Therapy Programs**

*Presenter(s): Marcia E. Humpal, MEd, MT-BC*

This presentation details music and music therapy with toddlers of all abilities in various community venues. Acquire information about model community-based inclusion programs teaching parents/caregivers how to make music with their little ones and how to use music as a form of play and a tool to increase communication. Participants will learn how to teach and adapt developmentally appropriate music activities for all young children. Additional discussion will focus on session format and how to disseminate information about using music to attain non-musical goals in both the group setting and at home.

*Contact: Marcia E. Humpal, MEd, MT-BC, 26798 Mangrove Lane, Olmsted Falls, OH 44138*

Recorded

Level: Entry

3:45 pm - 4:45 pm

CARTER

## **Considerations in Group Music Therapy with Children**

*Presenter(s): Karen D. Goodman, MS, RMT*

*Presenter: Donna Madden Chadwick, MS, LMHC, MT-BC*

This presentation will demonstrate the importance of specific factors in forming and implementing successful music therapy group work with children with multiple disabilities. These factors include developmental ages, sensory needs, transdisciplinary programming, use of support staff, session time and musical interest of the children. Videotaped clinical work will be shown and discussed.

*Contact: Karen D. Goodman, MS, RMT, 10 Locust Place, Livingston, NJ 07039*

Level: Professional, Entry, Student

3:45 pm - 4:45 pm

WALTON

## **Double Challenge: Music Therapy with Co-morbid Mentally Ill and Substance Abuse Patients**

*Presenter(s): Virginia Darnell*

*Presenter: Ellen B. Rayfield, MT-BC*

This presentation describes the problems music therapists face when approaching a population diagnosed with co-morbid mental illness and substance abuse problems with a combined in-patient and out-patient hospital group. Explore treatment ideas that can be implemented into a music therapy program.

*Contact: Virginia Darnell, 1080 Rolling Green Drive, Newton, NC 28658-9229*

Recorded

Level: Student

3:45 pm - 4:45 pm

GRAND SALON D

## **Effective Fund Raising Techniques for Regions: Swing & Scramble 101**

*Presenter(s): Russell E. Hilliard, PhD, LCSW, MT-BC; Dena Register, MM, MT-BC; Andrea M. Scheve, MM, MT-BC; Michael J. Silverman, MT-BC; Darcy Walworth, MM, MT-BC*

*Presenter: Michael E. Clark, MME, MT-BC*

Fund raising for music therapy is taken to a new level in this innovative, exciting workshop. Finding the right venue in each region to raise significant



# SESSION SCHEDULE

money, event organization, and continuing the process annually will be the focus of this presentation.

Contact: Darcy Walworth, MM, MT-BC, 1331 East Sixth Avenue, Tallahassee, FL 32303

Recorded  
Level: Entry

3:45 pm - 4:45 pm  
FULTON/COBB

## Empowering Choice: A Multi-Modal Approach to Treating Adolescent Boys in Residential Treatment

Presenter(s): V. James Hyde; Mollie Morris, MAAT; Luv Seamon, MA, DTR

Presenter: Kathryn Brosseau, MT-BC

This presentation introduces a protocol for treating pre-adolescent boys in residential treatment. The approach allows the boys the opportunity to choose the modality in which to work, thus fostering a sense of control over their environment. The treatment team provides opportunities for integrating the various expressive modalities which fosters a sense of unity among the group.

Contact: Luv Seamon, MA, DTR, Institute for Therapy through the Arts, 6160 N. Cicero Ave., Suite 122, Chicago, IL 60646

Recorded  
Level: Entry

3:45 pm - 4:45 pm  
GRAND SALON B

## Interventions with Neurological Patients from Music Therapy and Occupational Therapy Perspectives

Presenter(s): Libby Rogers, OT; Elizabeth H. Wong, MT-BC

Presenter: Sunny J. Hadder, MT-BC

Motor and perceptual dysfunctions often accompany neurological insults in adults and children. Come consider each deficit from occupational and musical therapy perceptions and discuss various interventions from both disciplines in order to gain a comprehensive view.

Contact: Elizabeth H. Wong, MT-BC, 7472 Pinnacle Point, Montgomery, AL 36117

Level: Entry

3:45 pm - 4:45 pm  
DEKALB/GWINNETT

## Introduction to Vocal Improvisation in Gospel Music

Presenter(s): Donna Cox, PhD

Presenter: Susan C. Gardstrom, MA, MT-BC

Though most music therapy programs require students to study voice, most are unable to perform genres outside the realm of European classical music with any degree of authenticity. This hands-on session will introduce participants to various techniques utilized in singing gospel music. Participants will duplicate a series of embellishments that will form the vocabulary to be used in improvising a simple gospel song. Many techniques emphasized may be used in popular music.

Contact: Donna Cox, PhD, 1124 Harvard Boulevard, Dayton, OH 45406

Recorded  
Level: Professional, Entry, Student

3:45 pm - 4:45 pm  
ROCKDALE/FORSYTHE

## Music Therapy in Child Partial Hospitalization Treatment: Structure and Strategies

Presenter(s): Laura E. DiFranco, MT-BC; Deborah Layman, MM, MT-BC

This presentation will explore a short-term music therapy intervention model within a partial hospitalization program serving severely emotionally disturbed preadolescent children. Music therapy is an advantageous group intervention with SED children, especially those who possess significant cognitive process limitations. Presenters will discuss case examples and highlight valuable therapeutic techniques and strategies.

Contact: Laura E. DiFranco, MT-BC, 1578 Temple Ave., Mayfield Heights, OH 44124

Level: Entry

3:45 pm - 4:45 pm  
HENRY

## Research Committee Presents: Government Sponsored Music Therapy During America's Great Depression

Presenter(s): William B. Davis, PhD, RMT

During the decade of the 1930's the Federal Music Project, a New Deal white-collar program

that employed thousands of out-of-work musicians, sponsored programs in numerous hospitals throughout the country. This presentation will detail the most important people, places and events that participated in this widespread but little remembered project.

Contact: William B. Davis, PhD, RMT, 5405 Taylor Lane, Fort Collins, CO 80525

Level: Professional, Entry, Student

3:45 pm - 4:45 pm  
FAYETTE/NEWTON

## Song Signing in Music Therapy

Presenter(s): Alice-Ann Darrow, PhD, RMT; Kate E. Gfeller, PhD, RMT

Presenter: Cynthia M. Colwell, PhD, MT-BC

Music therapists often find that using signs to underscore what is being said or sung enhances their verbal communication with young children and older clients. This presentation will include demonstrations of song signing techniques and ASL translations as well as descriptions of signed songs to facilitate the language development of deaf and hard-of-hearing clients.

Contact: Alice-Ann Darrow, PhD, RMT, 448 Murphy Hall, University of Kansas, Lawrence, KS 66045

Level: Entry, Student

3:45 pm - 4:45 pm  
GRAND SALON A

## Special Education Advocacy

Presenter(s): Judy Simpson, MHP, MT-BC

As our congressional leaders discuss the reauthorization of the Individuals with Disabilities Education Act (IDEA), now is the time to advocate for the needs of children with disabilities. Come hear the latest legislative news from Washington regarding IDEA and learn how you can be a part of on-going advocacy to increase access to music therapy in special education.

Contact: Judy Simpson, MHP, MT-BC, 8455 Colesville Rd., Ste. 1000, Silver Spring, MD 20910

Level: Professional, Entry, Student



# SESSION SCHEDULE

3:45 pm - 4:45 pm

CHEROKEE

## **Stairway to Professionalism: A Student's Guide to Defining and Understanding Music Therapy for Both Self and Others**

*Presenter(s): Virginia Darnell*

*Presenter: Io Elynn Berkly Beck, PhD, MT-BC*

This presentation discusses the issues that surround the music therapy student. From defining music therapy, to knowing the difference between GIM and Dalcroz, to knowing professional boundaries, to multicultural problems, this presentation will use small group activities to start communication between the growing ranks of music therapy students across the country.

*Contact: Virginia Darnell, 1080 Rolling Green Drive, Newton, NC 28658-9229*

Recorded

Level: Student

3:45 pm - 4:45 pm

CLAYTON

## **Technology in the Classroom: Streamlining Learning**

*Presenter(s): Edward A. Roth, MM, NMT, MT-BC*

Using technology in the classroom is becoming more of an expectation for many university faculty members. This presentation will provide an overview of essential hardware and software and a description of how to utilize technology in the immediate classroom and "virtual" classroom via CD-ROM as well as web-based formats.

*Contact: Edward A. Roth, MM, NMT, MT-BC, 3415 Iroquois Trail, Kalamazoo, MI 49006-2032*

Recorded

Level: Professional

5:00 pm - 6:00 pm

GRAND BALLROOM

## **AMTA Business Meeting**

5:00 pm - 6:30 pm

GRAND SALON C

## **AMTAS Business**

8:00 pm - 11:00 pm

GRAND BALLROOM

## **An Evening With Maureen McGovern**

11:00 pm - 2:00 am

GRAND SALON E

## **Jam Room**

11:00 pm - 2:00 am

WALTON

## **Jam Room**

11:00 pm - 2:00 am

FAYETTE

## **Jam Room**

**Saturday,  
November 2**

6:30 am - 8:30 am

PRE-FUNCTION AREA

## **Cash Breakfast**

7:00 am - 11:30 am

LOBBY REGISTRATION

## **Registration**

8:00 am - 9:15 am

## **Regional Meetings**

GRAND SALON A - Great Lakes Region

GRAND SALON C - Mid-Atlantic Region

GRAND SALON B - Midwestern Region

GRAND SALON D - New England Region

FAYETTE/NEWTON - Southwestern Region

FULTON/COBB - South Central Region

DEKALB/GWINNETT - Southeastern Region

ROCKDALE/FORSYTHE - Western Region

9:00 am - 4:30 pm

EXHIBIT HALL

## **Exhibits**

9:00 am - 10:30 am

GRAND SALON E

## **Public Relations Session**



9:30 am - 10:30 am

FULTON/COBB

## **Adolescents with Dual Diagnosis Learn Self Expression through Vocalizations**

*Presenter(s): Mary Erickson, MCAT, MT-BC; L. Amanda Luman, MA*

This presentation will describe the journey of a group of adolescents with a dual diagnosis of mental illness and developmental disabilities in an alternative school. It outlines the procedures employed to teach appropriate socialization and self-expression through vocal and instrumental improvisation. The presentation will include tape and video recordings of group performances.

*Contact: Mary Erickson, MCAT, MT-BC, 3020 S Newport St, Denver, CO 80224*

Recorded

Level: Entry

9:30 am - 10:30 am

GRAND SALON D

## **Hey You! - Integrating Young Children with Autism on Childcare Playgrounds**

*Presenter(s): Petra Kern, MT-BVM, MT-BC*

This presentation describes a project integrating children with autism on a childcare playground. It will focus on a study involving an outdoor music center and individualized songs to increase peer interaction on playgrounds for children with autism. Collaborative strategies and embedded therapy used to implement the intervention will be discussed.

*Contact: Petra Kern, MT-BVM, MT-BC, 302 St Thomas Dr, Chapel Hill, NC 27514*

Level: Entry

9:30 am - 10:30 am

CARTER

## **I See What You Are Playing! Uncover the World of Synaesthesia**

*Presenter(s): Ezelda M. Yacoub*

*Presenter: Amy Kampschroer, MT-BC*

Participants in this workshop will gain knowledge about the condition of synaesthesia, including its history, various types and connections with the arts including composers with the condition. Meet a synaesthete who is legally blind, schizophrenic, cognitively disabled, and very

# SESSION SCHEDULE

musically talented. Learn music therapy techniques employed with this subject.

Contact: Ezelda M. Yacoub, 209 East Market, Apt. #209, Burlington, WI 53105

Recorded  
Level: Entry

9:30 am - 10:30 am

WALTON

## Integration of AMTA Professional Competencies into the Music Therapy Curriculum

Presenter(s): Christina Lobe; Lee Anna Rasar, MME, WMTR, MT-BC; Allison Reynolds; Becky Risberg

Presenter: Dale B. Taylor, PhD, MT-BC

This session will present the results of a grant to identify courses in which competencies were actually met. Ideas for how to successfully present and gain acceptance for curricular changes will be included as well as a description of how to incorporate students and win their support in the curricular reform process. Descriptions of a revised curriculum, which defines competencies at all levels, will be given along with descriptions of curricular revisions and new courses.

Contact: Lee Anna Rasar, MME, WMTR, MT-BC, 2621 Winsor Drive, Eau Claire, WI 54703-1778

Recorded  
Level: Professional

9:30 am - 10:30 am

GRAND BALLROOM EAST

## Making the Connection between Research and Clinical Practice

Presenter(s): Shannon K. del'Etoile, PhD, MT-BC; Edward A. Roth, MM, NMT, MT-BC

As a practicing clinician, it can seem impossible to stay informed and stimulated by research. Beyond time constraints of ever increasing treatment responsibilities, translating evidence-based research findings into therapeutically meaningful information can seem daunting. This presentation will provide an epistemological model to assist the clinician in making the transfer from research findings to more effective interventions.

Contact: Edward A. Roth, MM, NMT, MT-BC, 3415 Iroquois Trail, Kalamazoo, MI 49006-2032

Recorded  
Level: Entry

9:30 am - 10:30 am

GRAND SALON C

## Music Therapy and Wellness: More than Making Music?

Presenter(s): David S. Smith, PhD, MT-BC

Wellness has become a buzzword commonly used by health promoters, marketers and manufacturers. However, there is no universally accepted definition of Wellness. This session will explore the origins of the Wellness movement, current activities conducted under the Wellness umbrella, and the future involvement of music therapists as Wellness providers.

Contact: David S. Smith, PhD, MT-BC, Western Michigan University, School of Music, 1903 W. Michigan Ave., Kalamazoo, MI 49008-3831

Recorded  
Level: Professional, Entry, Student

9:30 am - 10:30 am

CHEROKEE

## Music Therapy in the Multimodal Model

Presenter(s): Jennie Purvis Band, PhD, LPC, FAMI, MT-BC

Presenter: Linda Harper Mattern, MEd, MT-BC

This presentation examines music therapy within the framework of the multimodal model by Arnold Lazarus. An integral component of this eclectic model is the Basic I.D., an acronym that refers to seven interrelated modalities. Participants will learn how to use the Basic I.D. for music therapy assessment and treatment.

Contact: Jennie Purvis Band, PhD, LPC, FAMI, MT-BC, 406 Shortbow Ct., Columbia, SC 29212

Recorded  
Level: Professional

9:30 am - 10:30 am

DEKALB/GWINNETT

## Not Simply Alive but Living: Music Therapy with Ventilator-Dependent Clients

Presenter(s): Heather A. Hodorowski, MT-BC

Presenter: Rachel A. Pulver, MT-BC

Participants will be given an overview of ventilator care including population-specific terminology, the individual needs of ventilator-dependent clients and challenges/implications for music therapy treatment. The presenter will share examples of

her clinical work with long-term ventilator care clients including song writing and improvisation.

Contact: Heather A. Hodorowski, MT-BC, 6053 W Calumet Rd, Milwaukee, WI 53223

Recorded  
Level: Entry

9:30 am - 10:30 am

GRAND SALON B

## Psychology of Chemically Dependent Persons: Issues, Treatment, and Music Therapy

Presenter(s): Michael J. Silverman, MM, MT-BC

Presenter: Kelly Kohart, MT-BC

Understanding the psychology of chemically dependent clients as well as the developmental stages of addiction can lead to greater insight and successful interventions. This presentation will address both short- and long-term treatment of chemically dependent clients with a variety of interventions. The material covered may be transferred to other psychiatric and adolescent populations.

Contact: Michael J. Silverman, MM, MT-BC, 4600 Seton Center Parkway Apt 312 Austin TX 78759-5253

Recorded  
Level: Professional, Entry

9:30 am - 10:30 am

HENRY

## Psychotherapy with Gay and Lesbian Clients: Implications for Music Therapists

Presenter(s): Kristen M. Cole, MM, MT-BC

Presenter: Frederick C. Tims, PhD, MT-BC

This presentation and discussion will highlight recent research in psychotherapy with gay and lesbian clients that exposes implications for music therapists. Topics such as general issues and approaches, attitudes towards therapy, choice of therapist and heterosexual therapists working with homosexual clients will be explored. In addition, a multicultural music therapy model, which includes the sexual minority culture, will be presented.

Contact: Kristen M. Cole, MM, MT-BC, 905-6th Avenue South, Apt. 11, Columbus, MS 39701

Recorded  
Level: Professional, Entry



# SESSION SCHEDULE

9:30 am - 10:30 am

DOUGLAS/PAULDING

## **The Effects of Music on the Autonomic Nervous System: Using Subdermal Electric Stimulation as a Guide**

*Presenter(s): Fumio Kuribayashi, PhD, MT-BC*

*Presenter: Gene Ann Behrens, PhD, MT-BC*

Attend this demonstration to investigate the relationship between music therapy and Ryoudouraku, a form of acupuncture. Presenters will measure reactions of healthy individuals' ANS to stimulating or sedative music by measuring electrical current in their acupuncture points and meridians - tracts representing various organs through which energy travels. The study will also probe into the claim that symptomatic patients' electrical responses to music are dampened in the acupuncture points representing their symptoms.

*Contact: Fumio Kuribayashi, PhD, MT-BC, 1-6-3-1-104 Aino Sato, Kita-ku, Sapporo, Hokkaido, JAPAN 002-8071*

Recorded

Level: Professional, Entry, Student

9:30 am - 10:30 am

FAYETTE/NEWTON

## **The Role of Process Oriented Group Music Therapy Sessions in Child/Adolescent Day Treatment**

*Presenter(s): Margaret Burgess, MMT, MT-BC*

*Presenter: Bryan J. Muller, MMT, MT-BC*

Process-oriented music therapy can be used with groups of emotionally and behaviorally disturbed children (ages 11-16) in day treatment. An approach including improvisation, songwriting and creative song discussion will be presented. Collectively, these techniques have elicited heightened self-awareness and improvement in target behaviors. Improvised recordings and song material from initial, middle and late stages of the group process will be presented.

*Contact: Margaret Burgess, MMT, MT-BC, 201 Summit Avenue, Mt. Holly, NC 28120*

Recorded

Level: Entry

9:30 am - 10:30 am

CLAYTON

## **Using Music to Develop English Pronunciation with International Students**

*Presenter(s): Mika Hama, MME, MT-BC*

*Presenter: Eri Haneishi, MME, MT-BC*

This is a discussion of a study to determine the effects of singing and rhythm instrument playing on the speech prosody skills (such as rhythm, intonation and overall pronunciation) of international students. The results indicated that participants made significant improvements in the production of accurate English prosody.

*Contact: Mika Hama, MME, MT-BC, 1-12-2-707 Sakuradaai Nerima, Tokyo 176-0002, JAPAN*

Level: Entry

9:30 am - 10:30 am

GRAND SALON A

## **Using the Kindermusik Village Program as a Therapeutic Tool with Infants to Geriatrics**

*Presenter(s): Robin Lynn Gentile, RMT*

*Presenter: Sr. Mary Margaret Delaski, FSE, MA, MT-BC*

This session will describe the Kindermusik Village program in its originally intended form, as a developmental movement and music program for infants and parents. The many therapeutic uses of the program, such as use in music with developmentally delayed infants and toddlers, parent education/interaction in at-risk families and intergenerational music therapy in a geriatric setting, will be discussed.

*Contact: Robin Lynn Gentile, RMT, 3901 Auburn Hills Dr, Greensboro, NC 27407*

Recorded

Level: Entry

9:30 am - 10:30 am

ROCKDALE/FORSYTHE

## **Writing for Publication: Overcoming Common Obstacles**

*Presenter(s): Brian L. Wilson, MM, MT-BC*

This "user-friendly" session will review the rewards and pitfalls associated with preparing manuscripts for publication including identifying appropriate journals and their publication objectives, how to prepare a manuscript for submission, the steps involved in the review

process, and common reasons for manuscript rejection.

*Contact: Brian L. Wilson, MM, MT-BC, School of Music, 1903 West Michigan Ave., Western Michigan University, Kalamazoo, MI 49008*

Recorded

Level: Entry

9:30 am - 11:00 am

ADAMS

## **AMTA Executive Board**

10:45 am - 12:15 pm

FULTON/COBB

## **Bridging the Multicultural Gap**

*Presenter(s): Sangeeta Pentel-Swamy, MA, MM, MT-BC*

*Presenter: Laurie G. Rugenstein, MMT, LPC, FAMI, MT-BC*

This experiential and informative workshop will guide you through the fundamentals of music therapy with African-American, Chicano, Native American, and Asian peoples. Utilizing guided imagery, music analysis and unique improvisational tools, increase your awareness, knowledge and competency for working with multicultural populations. The presenter will then show how to modify these interventions for more specific populations. Handouts and cultural repertoire lists will be available.

*Contact: Sangeeta Pentel-Swamy, MA, MM, MT-BC, 3422 W 37th Ave., Denver, CO 80211-2737*

Recorded

Level: Professional, Entry, Student

10:45 am - 12:15 pm

DEKALB/GWINNETT

## **Easing the Pain: Music Therapy with Older Adults Undergoing Physical Rehabilitation**

*Presenter(s): Joy L. Allen, MT-BC*

*Presenter: Shoshannah B. Elsbree, MS, MT-BC*

Learn how to implement music therapy as an effective pain management technique in rehabilitation settings. This session will examine music therapy for acute pain management in older adults. Participants will be provided with an overview of acute pain, rationale for the use of music therapy, specific techniques and precautions, current clinical research and tips

# SESSION SCHEDULE

for promoting music therapy as an effective nonpharmacological method of pain control.

Contact: Joy L. Allen, MT-BC, 218 Berkley Manor Drive, Cranberry Township, PA 16066-4858

Recorded  
Level: Entry

10:45 am - 12:15 pm

CLAYTON

## He Couldn't Stop Singing: Nordoff-Robbins Music Therapy with a Boy Diagnosed with Autism

Presenter(s): David Marcus, MM, MA, NRMT, CMT; Kaoru Robbins, MA, NRMT, CMT

A case study of music therapy with a boy diagnosed with autism demonstrates the effectiveness of incorporating improvised music from the Nordoff-Robbins approach to meet his needs through his initial resistance and the therapeutic process. This presentation will show the basic clinical decisions and strategies developed to deal with multiple layers of disability, deficit and psychological (mal)adaptation. The power of music and its enhanced effectiveness when "administered" with clinical creativity and imagination is confirmed.

Contact: David Marcus, MM, MA, NRMT, CMT, 2350 Broadway, New York, NY 10024

Level: Professional, Entry, Student

10:45 am - 12:15 pm

WALTON

## Music and Prayer: Pictures for the Soul

Presenter(s): Jane Curran, DMA; James L. Jenkins, MA, MT-BC

This session investigates the parallels between music and spirituality. It explores how these disciplines are interwoven in the Hospice clinical setting. Emphasis will be placed on interventions with clinical examples. These instances are used to discuss end-of-life issues and how both music and prayer are utilized.

Contact: James L. Jenkins, MA, MT-BC, 11 Village Park Drive, Weaverville, NC 28787

Recorded  
Level: Entry

10:45 am - 12:15 pm

GRAND SALON B

## Music Therapy in the 21st Century: A Challenge for the Academy

Presenter(s): James L. Haines, PhD, MT-BC

This session was developed with the frequent concern among clinical training directors regarding the lack of functional music skills possessed by their interns and the changes needed in the music therapy curricula to address the competencies. The presenter will facilitate a discussion concerning three areas of music learning in the curricula - thinking about music making, music making and the integration of these skills. Special attention will be given to music learning.

Contact: James L. Haines, PhD, MT-BC, 307 Spring Garden Street, Elizabethtown, PA 17022

Recorded  
Level: Professional

10:45 am - 12:15 pm

DOUGLAS/PAULDING

## Music Therapy in a Pediatric Outpatient Oncology Clinic: Research and Clinical Applications

Presenter(s): Courtney Brez, MMT, MT-BC

Presenter: Leslie D. Meadows, MT-BC

The presenter will discuss practical ideas, successes, and encountered difficulties while conducting research at the Ireland Cancer Center's Pediatric Outpatient Oncology Clinic. Videotaped examples of music therapy sessions include those incorporating music and movement intervention. Participants will receive materials and applications that can be incorporated into their own setting

Contact: Courtney Brez, MMT, MT-BC, 2667 Hampshire Road, Cleveland Heights, OH 44106

Recorded  
Level: Entry



— Saturday —

10:45 am - 12:15 pm

GRAND BALLROOM EAST

## Orff Schulwerk Techniques for the Music Therapist

Presenter(s): Kimberly VanWeelden, PhD; Jennifer Whipple, MM, MT-BC

Presenter: Cynthia M. Colwell, PhD, MT-BC

Orff Schulwerk is easily adapted to incorporate non-musical goals and objectives for clients of all ages and abilities. This presentation will provide an overview of Orff principles as well as experiences involving movement, speech poems, body percussion, pitched and unpitched percussion instruments. Transfers to a variety of music therapy settings from this traditionally music education method will be discussed.

Contact: Jennifer Whipple, MM, MT-BC, 3961 Gaffney Loop, Tallahassee, FL 32303-1216

Recorded  
Level: Entry

10:45 am - 12:15 pm

HENRY

## Songs without Words - Facilitating Guttural Singing as Self Expression

Presenter(s): Julie Andring Morgan, MSA, MT-BC

Music therapy techniques to facilitate guttural singing solely as a means of self-expression will be presented and illustrated through videotaped examples in this presentation. A clinical rationale for facilitating guttural singing as a cathartic means to its own end will be provided. Documentation and assessment of guttural singing as a therapeutic goal will be reviewed.

Contact: Julie Andring Morgan, MSA, MT-BC, 35 White Road, Northfield, CT 06778-2308

Recorded  
Level: Professional

10:45 am - 12:15 pm

GRAND SALON A

## Start Strumming: A Step Towards Guitar Proficiency

Presenter(s): Frances J. McClain, PhD, MT-BC; Kathryn Scheldt, MM

This session is designed for music therapy majors or anyone else just beginning to study guitar. It will focus on familiar 2, 3 and 4 chord songs that can be adapted for clients of varying ages and abilities. Basic techniques and adaptations will

# SESSION SCHEDULE

be demonstrated. Limited guitars are available, so, if possible, bring your own and let's start strumming.

Contact: Frances J. McClain, PhD, MT-BC, 7522 Hounslow Lane, Charlotte, NC 28213

Recorded  
Level: Student

10:45 am - 12:15 pm

ROCKDALE/FORSYTHE

## **Substance in the Circle: Integrating Two Models of Group Music Therapy for the Treatment of Children with Multiple Physical and Cognitive Needs**

Presenter(s): Kathryn Brosseau, MT-BC; Ted Rubenstein, PsyD; Victoria A. Storm, MT-BC

This presentation will explain the results from a comparative study between two group models of music therapy. One model implements an individual's treatment plan in a group setting. The other model explores a group treatment plan with an emphasis on socialization. Outcome measures include fine/gross motor skills, verbalization, and eye contact goals.

Contact: Kathryn Brosseau, MT-BC, 6760 N. Sheridan Rd. Apt. #3E, Chicago, IL 60626

Recorded  
Level: Professional

10:45 am - 12:15 pm

FAYETTE/NEWTON

## **The "Affiliate" Internship: Been There, Doin' That!**

Presenter(s): Jenny Barnett Rohrs, MT-BC; Edward P. Gallagher, MT-BC; Lalene D. Kay, MM, ACC, MT-BC; Mary Catherine K. Maxwell, ACC, MT-BC; Marcy L. Nero, RMT

This is a panel presentation featuring Cleveland-area music therapists and their current (or recently completed) interns from the Cleveland Music Therapy Consortium. Experiences throughout the affiliate internship process will be presented including suggestions, changes and improvements for future experiences. Presenters' experiences range from a transitional care unit, geropsychiatric/behavioral medicine and dialysis center.

Contact: Lalene D. Kay, MM, ACC, MT-BC, 331 Fair Street, Berea, OH 44017-2305

Level: Professional, Entry

10:45 am - 12:15 pm

CARTER

## **The New York City Music Therapy Relief Project: A Case Study**

Presenter(s): Joanne Carey, MA, CTRS, MT-BC; Joseph Nagler, DA, CMT; Tamara Zavislan, MMT, MT-BC

Presenter: Tamara W. Zavislan, MMT, MT-BC

Since November 2001, AMTA, with underwriting support from The Recording Academy, has provided over 7,000 music therapy interventions throughout the New York City metropolitan area in response to the events of September 11, 2001 through the New York City Music Therapy Relief Project. The project was designed to help those struggling with the aftermath of the attacks to reduce stress and cope with trauma through the focused use of music and music therapy interventions. This session will highlight one program site of the Project - Hoboken High School in Hoboken, NJ. The students of this combined junior/senior high school witnessed the attack on the World Trade Center on Sept. 11th. Various aspects of the music therapy program at Hoboken High School will be discussed. A video of the program, featuring the students, will be presented.

Contact: Tamara W. Zavislan, MMT, MT-BC, 8455 Colesville Road, Suite 1000, Silver Spring, MD 20910

Recorded  
Level: Professional, Entry, Student

10:45 am - 12:15 pm

GRAND SALON C

## **The Role of the Music Therapy Quality Assurance Coordinator, or How I Learned to Love Outcomes-Based Measurement**

Presenter(s): Ronna S. Kaplan, MA, MT-BC

Presenter: Debra Caspary, MT-BC

This workshop will explore the development and application of a department-wide Music Therapy Outcomes-Based Measurement program and the role of the Music Therapy Quality Assurance Coordinator on staff. Learn why the United Way Services require funded programs to measure and report outcomes. Participants will have the opportunity to begin to develop ideas for

outcomes-based measurement in their own programs.

Contact: Ronna S. Kaplan, MA, MT-BC, 2557 Derbyshire Road, Cleveland Heights, OH 44106-3230

Recorded  
Level: Professional

11:15 am - 1:15 pm

GRAND SALON D

## **Assembly of Delegates**

12:00 pm - 2:00 pm

PRE-FUNCTION AREA

## **Cash Lunch**

12:15 pm - 1:30 pm

EXHIBIT HALL

## **Exhibit Spectacular**

1:00 pm - 5:00 pm

LOBBY REGISTRATION

## **Registration**

1:30 pm - 3:30 pm

GRAND BALLROOM WEST

## **Drumming Your Way to WELLNESS**

Presenter(s): Christine Stevens, MSW, MT-BC

Presenter: Ami Belli, MD

Shown to be an effective tool for HEALTH & WELLNESS, recreational music making is quite possibly the next strong wave of employment for music therapists interested in preventive health. This workshop will demonstrate sound methods and activities that emphasize personal growth and stress-reduction through musical expression in the form of group drumming using the new Remo Sound Shape drums.

Contact: Christine Stevens, MSW, MT-BC, 28101 Industry Drive, Valencia, CA 91355





# SESSION SCHEDULE

1:30 pm - 3:30 pm

CLAYTON

## Hand In Glove: Music Therapy and Eye-Movement Desensitization and Reprocessing (EMDR)

Presenter(s): Cynthia A. Briggs, PsyD, MT-BC

Presenter: Mary Erickson, MCAT, MT-BC

The techniques of Eye-Movement Desensitization and Reprocessing (EMDR) and music therapy have the key element of rhythm in common. With children, EMDR has become focused on using bilateral, rhythmic tapping of the body as a major component of the technique. Music therapy techniques incorporating bilateral tapping can include components of EMDR to provide effective treatment interventions for severely abused and attachment disordered children. Information and research related to EMDR and music therapy will be presented through videos and discussion.

Contact: Cynthia A. Briggs, PsyD, MT-BC, 7900 Natural Bridge Rd, St. Louis, MO 63121

Level: Professional

1:30 pm - 3:30 pm

GRAND SALON B

## Jordan Can Sing: Exploring Musical Connections in Improvisational Music Therapy

Presenter(s): Suzanne Nowikas-Sorel, MA, NRMT, MT-BC

This presentation is geared to professionals working with challenging clients who do not always demonstrate a clear line of developmental progress from session to session. Excerpts from work with Jordan, a six-year-old nonverbal child with a pervasive developmental disorder will be presented in order to highlight moments of connection in the therapy process. Clinical, psychological, and personal dynamics that relate to humanistic and transpersonal writings will be explored.

Contact: Suzanne Nowikas-Sorel, MA, NRMT, MT-BC, 350 Cabrini Blvd Apt 6G, New York, NY 10040-3650

Recorded

Level: Professional

1:30 pm - 3:30 pm

ROCKDALE/FORSYTHE

## Making Connections: American Sign Language, Music Therapy & Community Integration

Presenter(s): Sandra L. Curtis, PhD, MT-BC

This workshop presents an exciting collaborative project which brings together adults with developmental delays, university students, and community members in a performing ensemble dedicated to American Sign Language interpretation of music. Participants will learn adaptive ASL teaching techniques, community integration guidelines, a repertoire of songs and the ASL skills for their performance.

Contact: Sandra L. Curtis, PhD, MT-BC, University of Windsor, School of Music - 401 Sunset Avenue, Windsor, ON, CANADA N9B 3P4

Recorded

Level: Entry

1:30 pm - 3:30 pm

DEKALB/GWINNETT

## Music Therapy in Trauma

### Situations: A Panel Discussion

Presenter(s): Ronald Borczon, MM, MT-BC; Andrea Frisch Hara, MA, MT-BC; Edward Roth, MM, NMT, MT-BC; Tamara W. Zavislan, MMT, MT-BC

Presenter: Tamara W. Zavislan, MMT, MT-BC

Music therapists know that the power of music and music therapy can reach, touch, and help individuals and communities responding to and coping with crisis or trauma. Join music therapists from Northridge, California; Littleton, Colorado; and New York, New York in a discussion of the role and impact of music therapy in crisis situations. We will explore common themes, obstacles and barriers to service, and successful models for intervention.

Contact: Tamara W. Zavislan, MMT, MT-BC, 8455 Colesville Road, Suite 1000, Silver Spring, MD 20910

Recorded

Level: Professional, Entry, Student

1:30 pm - 3:30 pm

FULTON/COBB

## Music Therapy, Sensory and Spiritual Connections for Persons with Alzheimer's Disease

Presenter(s): Nancy M. Lloyd, MME, WMTR, RMT

Presenter: Jean M. Calhoun, MT-BC

Learn a needs-based music and soothing, sensory approach for persons with Alzheimer's disease who seek spiritual connections but may have difficulty accessing them. Music which garners an aesthetic, emotional response can do wonders for one's quality of life, identity, and inherent dignity. Sensory approaches for individuals and small groups will be shared through music examples with unique visual, tactile props and creative transitional objects.

Contact: Nancy M. Lloyd, MME, WMTR, RMT, 1732 Southland Avenue, Oshkosh, WI 54902-4118

Level: Entry

1:30 pm - 3:30 pm

CHEROKEE

## Peer Supervision Groups: Staying Connected through Music

Presenter(s): Robin E. Rio, MA, MT-BC

Presenter: Lisa R. Jackert, MA, MT-BC

Workshop participants will be taken through a variety of music experiences used in a model peer group by working in small groups. There will be opportunities for verbal processing and application of participants' current personal and professional issues within the small groups, based on the comfort level of the participants. Suggestions of how to develop and maintain a music-based peer group will be explored.

Contact: Robin E. Rio, MA, MT-BC, 5934 S. Juniper St., Tempe, AZ 85283

Level: Entry

1:30 pm - 3:30 pm

DOUGLAS/PAULDING

## Professional Longevity Among Music Therapists

Presenter(s): Darlene Brooks, PhD, MT-BC; Anthony A. Decuir, PhD, RMT; Victoria P. Vega, MMT, MT-BC

Presenter: Kathleen Murphy, MMT, MT-BC

This session will discuss reasons for professional longevity. Music therapists will be asked to



— Saturday —

# SESSION SCHEDULE

compare the importance of selected standards from the AMTA "Standards of Professional Practice" in their current practice compared to when they entered the field. Music therapists with a minimum of 5 years experience (without regard to degrees, gender, or full or part time practice) will be randomly selected from AMTA membership.

Contact: Anthony A. Decuir, PhD, RMT, 2633 Lapeyrouse Street, New Orleans, LA 70119

Level: Professional

1:30 pm - 3:30 pm

GRAND SALON E

## Research Poster Session

Presenter(s): Clifford Madsen, PhD

Contact: Clifford Madsen, PhD, Florida State University, School of Music, Tallahassee, FL 32306

1:30 pm - 3:30 pm

FAYETTE/NEWTON

## The Melodies of Grief: Sounds of the Healing

Presenter(s): Christina Foley, LCSW; David Harper, MT-BC

Presenter: Dana L. Smith, MT-BC

Explore the theoretical foundations of the grieving process in this presentation which will provide resources to increase the efficacy of music therapy interventions within hospice bereavement settings as well as age appropriate interventions/activities for use in individual and group settings. Experiential exercises will enable each participant to increase their understanding of the relationship between music and grieving.

Contact: David Harper, MT-BC, Hospice Savannah, Inc., 1352 Eisenhower Dr., Savannah, GA 31406

Recorded

Level: Entry

1:30 pm - 3:30 pm

WALTON

## The Psychotherapeutic Use of Songs

Presenter(s): Annie L. Heiderscheid, MS, FAMI, MT-BC

Presenter: Bridget A. Doak, MA, MT-BC

This workshop is designed to explore the psychotherapeutic elements within songs and their uses within group and individual therapy. The presentation will include several clinical illustrations of songs utilized with adult and adolescent clients. The workshop will incorporate

what a song communicates about a client in addition to methods of analyzing lyrics and music.

Contact: Annie L. Heiderscheid, MS, FAMI, MT-BC, 9722 Ives Lane N., Maple Grove, MN 55369

Recorded

Level: Professional, Entry, Student

1:30 pm - 3:30 pm

GRAND SALON C

## Tips for Making Effective Presentations to a Variety of Audiences

Presenter(s): Edward P. Gallagher, MT-BC; Lisa M. Gallagher, MA, MT-BC

Music therapists are often asked to present to a spectrum of audiences, from the local Women's Club to the media to medical professionals. This session will identify what types of information to share and provide ideas on how to effectively present this information to different audiences. Tips on effective visual aids and dealing with the media will be discussed.

Contact: Lisa M. Gallagher, MA, MT-BC, 8106 Parmenter Drive, Parma, OH 44129-5351

Recorded

Level: Professional, Entry, Student

1:30 pm - 5:15 pm

HENRY

## Music Therapy Ethics, More than Confidentiality

Presenter(s): Deborah S. Bates, MT-BC; Carol L. Shultis, MEd, FAMI, MT-BC

Working without the ability to use ethical thinking (and an awareness of the obstacles of implementation), the therapist is more likely to encounter ethical problems in clinical work. This session will offer didactic material, experiential exercises and group discussion in an effort to define characteristics of a "virtuous music therapist" and identify personal values that may influence clinical decisions. The presenter will also demonstrate the use of a problem solving approach to ethical questions and concerns.

Contact: Deborah S. Bates, MT-BC, 4254 Bridgewater Pkwy, Apt. #203, Stow, OH 44224

Level: Professional, Entry, Student

3:45 pm - 5:15 pm

CLAYTON

## A Hierarchical Approach for Music Therapy with Geriatric Participants

Presenter(s): Debra L. Caspary, MT-BC

Presenter: Ronna S. Kaplan, MA, MT-BC

This workshop focuses on four different levels of functioning for geriatric participants. Examples of different characteristics and objectives as well as interventions under four main goal areas for each level will be given. Various phases of a session, including sample procedures and session plans, will be discussed. The presenter will describe her development of a database for this population.

Contact: Debra L. Caspary, MT-BC, 3279 Marpat Lane, Brunswick, OH 44212-3197

Recorded

Level: Entry

3:45 pm - 5:15 pm

ROCKDALE/FORSYTHE

## Applications of Gardner's M.I. Theory for the School-Based Music Therapist

Presenter(s): Leslie L. Hunter, MME, MT-BC

Presenter: Beth R. McLaughlin, MS, MT-BC

This presentation will provide an overview of Howard Gardner's Theory of Multiple Intelligences as well as applicable possibilities for the school-based music therapist. A description of a middle school pilot program and the opportunity for a group discussion will be provided.

Contact: Leslie L. Hunter, MME, MT-BC, 14 Williamsburg Circle, Fairport, NY 14450-9122

Recorded

Level: Entry

3:45 pm - 5:15 pm

CHEROKEE

## Basic Blues: Turnarounds, Fills and Chord Vocabulary

Presenter(s): Robert E. Jordan, Jr., MA, MT-BC

This workshop is designed to increase and enrich basic blues guitar accompaniment skills. It includes a lecture/demonstration of blues turnarounds and fills as well as the chord vocabulary required to play them. The format is experiential with much playing and as much



# SESSION SCHEDULE

individual attention as possible. Participants are encouraged to bring a cassette recorder.

Contact: Robert E. Jordan, Jr, MA, MT-BC, 201 Preston Road, Flourtown, PA 19031

Level: Entry

3:45 pm - 5:15 pm

WALTON

## Beyond Bicycle Built for Two: Non-traditional Music Therapy for the Geriatric Client

Presenter(s): Laura S. Lenz, MT-BC; Margie A. Swint, MEd, MT-BC

This experiential presentation will demonstrate a variety of music therapy activities using non-traditional themes, music, instruments, and props. The activities are designed to target all functioning levels of the geriatric population. A new paradigm in which more contemporary music, unusual instruments, and novel activities can be combined with traditional session ideas to create a unique and therapeutic experience for each geriatric client.

Contact: Laura S. Lenz, MT-BC, 2553 Ferndale Ln, Snellville, GA 30078

Recorded

Level: Entry

3:45 pm - 5:15 pm

FULTON/COBB

## Cochlear Implant: The Role of Music Therapy

Presenter(s): Andrea Marie Cevasco, MMEd, MT-BC; Roy E. Grant, PhD, RMT; John Weber

This will be a live experiential presentation with therapists and a cochlear implant recipient who had been deaf for 38 years. The therapists will share the assessment and treatment implementation and the audience will participate in music activities. The implant recipient will share responses/experiences and will conclude with a live piano performance.

Contact: Roy E. Grant, PhD, RMT, 4661 New Kings Br. Rd., Nicholson, GA 30565

Level: Professional, Entry, Student



3:45 pm - 5:15 pm

GRAND BALLROOM WEST

## Listening to the Circle Processing Drum Circle Interventions

Presenter(s): Carolyn Koebel, MM, MT-BC

This session will explore the role of listening, both from the perspective of the participants and the facilitator. Suggestions for pre-drumming rhythmic activities will be emphasized, along with a brush-up on basic drumming technique.

Contact: Carolyn Koebel, MM, MT-BC, 3308 Hoover Street, Kalamazoo, MI 49008

Recorded

Level: Professional, Entry, Student

3:45 pm - 5:15 pm

CARTER

## Music Therapy as a Cost Effective Measure in the HealthCare Setting

Presenter(s): Darcy Walworth, MM, MT-BC

Presenter: Dena Register, MM, MT-BC

Music therapy assisted healthcare tests and procedures can save hospital money and decrease staff time, length of procedure and amount of patient sedation. The process of establishing new programs, documentation of patient outcome, areas currently thriving in the hospital setting, and case studies will be discussed.

Contact: Darcy Walworth, MM, MT-BC, 1331 East Sixth Avenue, Tallahassee, FL 32303

Recorded

Level: Entry, Professional

3:45 pm - 5:15 pm

GRAND SALON C

## Neuroanatomy and Brain Function: The Basics for Understanding Neurological Research in Music

Presenter(s): Carla Hearl Morton, MS, MT-BC

Presenter: Joseph Scartelli, PhD, MT-BC

The purpose of this presentation is to acquaint practicing music therapists and students with basic neuroanatomy and brain function as well as methods of assessing brain structure and activity. The goal is to increase understanding

and appreciation of neurological research that can impact the practice of music therapy.

Contact: Carla Hearl Morton, MS, MT-BC, 7034 N. Sheridan Rd., Apt. 1-J, Chicago, IL 60626

Recorded

Level: Student, Entry Professional

3:45 pm - 5:15 pm

GRAND BALLROOM EAST

## Orff Music Therapy with Well Elderly Persons

Presenter(s): Nancy L. Krutenat, MMT, MT-BC

Presenter: Bryan C. Hunter, PhD, MT-BC

This presentation will include information about Orff Music Therapy and a protocol for using it with the well elderly. Video excerpts of a session with this population will be viewed with attention to protocol, participants' interactions/feedback and results. The opportunity to play original compositions arranged for an Orff ensemble with the well elderly will conclude the presentation.

Contact: Nancy L. Krutenat, MMT, MT-BC, 980 Clevenger Rd., Ontario, NY 14519

Recorded

Level: Professional, Entry, Student

3:45 pm - 5:15 pm

GRAND SALON A

## Research Committee Presents: An Introduction to Action Research

Presenter(s): Colleen Conway, EdD; David W. Luce, PhD, MT-BC

Presenter: Clifford Madsen, PhD

Action research can be an effective tool for clinicians to inform their own clinical practice, share their findings with peers or other professionals, or to inform administrators or colleagues about the effectiveness of music therapy. This brief introduction will provide clinicians with an overview of action research methods and protocols.

Contact: Clifford Madsen, PhD, Florida State University, School of Music, Tallahassee, FL 32306





# SESSION SCHEDULE

3:45 pm - 5:15 pm

FAYETTE/NEWTON

## Roundtable for Educators and Internship Directors/ Supervisors: Implementation of New AMTA Standards

Presenter(s): Mavis N. Mahlberg, MA, MT-BC; Marilyn I. Sandness, MM, MT-BC

Presenter: Mavis N. Mahlberg, MA, MT-BC

Come exchange information and ideas for implementation of the new AMTA "Standards for Education and Clinical Training." The copresenters will highlight various issues for group discussion, with a focus on how academic faculty and internship directors/supervisors work in partnership to develop student competencies. There will also be an update of recent changes and developments in AMTA policies, procedures and guidelines for academic program as well as national roster internship approval.

Contact: Marilyn I. Sandness, MM, MT-BC, PO Box 751231, Dayton, OH 45475-1231

Recorded

Level: Entry, Professional

3:45 pm - 5:15 pm

GRAND SALON D

## The Best of Both Worlds: Clinical Practice and Research on a Burn Unit

Presenter(s): Kristi L. Thomas, MT-BC

Presenter: Adrienne A. Gorsuch Randel, MT-BC

This discussion will describe the establishment and implementation of a grant funded position in which service delivery and research endeavors are successfully blended. The benefits and logistics of this clinical design will be discussed as well as specific music therapy interventions developed for use in burn care. Participants will be given the opportunity to explore application to their own practice.

Contact: Kristi L. Thomas, MT-BC, 1587 Warren Road, Lakewood, OH 44107

Recorded

Level: Professional



Information Subject to Change

3:45 pm - 5:15 pm

GRAND SALON B

## The Music Never Stopped: The Grateful Dead and Music Therapy

Presenter(s): Kenneth S. Aigen, DA, NRMT, MT-BC

In recent years, there has been a surge of interest in the Grateful Dead from scholarly disciplines such as musicology and sociology. This roundtable is an opportunity for music therapists to discuss the impact of the band and its music upon their own music therapy work. Learn about the area of "Grateful Dead Studies" as exemplified in recent publications such as Perspectives on the Grateful Dead: Critical writings and deadhead social science.

Contact: Kenneth S. Aigen, DA, NRMT, MT-BC, 50 Hudson Street, Hastings-on-Hudson, NY 10706

Recorded

Level: Professional

3:45 pm - 5:15 pm

DOUGLAS/PAULDING

## The Unique Role of Music Therapy in the Neonatal Intensive Care Unit

Presenter(s): Brian Abrams, PhD, FAMI, MT-BC

Presenter: Kristen Stewart

This presentation will feature a consideration of the unique role and benefits of music therapy in the neonatal intensive care unit (NICU). Included will be an introduction to the NICU, review of pertinent literature, discussion of music therapy practice in the NICU, case material, and an interactive demonstration.

Contact: Brian Abrams, PhD, FAMI, MT-BC, 11 North A St., Apt. #41, Salt Lake City, UT 84111

Recorded

Level: Professional, Entry, Student

5:30 pm - 6:30 pm

GRAND BALLROOM WEST

## AMTA Business Meeting

5:30 pm - 6:30 pm

GRAND BALLROOM EAST

## AMTAS Business Meeting

7:00 pm - 8:00 pm

GRAND SALON E

## Drum Circle

9:00 pm - 1:00 am

GRAND BALLROOM WEST

## Cabaret

**Sunday,  
November 3**

6:30 am - 8:30 am

PRE-FUNCTION AREA

## Cash Breakfast

7:00 am - 12:00 pm

CLAYTON

## CMTE V. The Use of Music in Trauma: Caring for the Caregiver

Presenter(s): Frank X. Bosco, MT-BC; Susan H. Feiner, MA, MT-BC; Andrea Frisch, MA, MT-BC; Kate Richards Geller, MA, MT-BC; Joanne Loewy, DA, MT-BC; Judi F. Rubin-Bosco, MT-BC; Kristen Stewart; Alan M. Turry, MA, MT-BC

This course will provide participants with an understanding of trauma and the effects that fear and anxiety have upon communities in the face of disaster. The work presented will be both experiential and educative. It is based on the training of a core team of nine music therapists, all of whom participated in an intensive, music therapy trauma training called Caring for the Caregiver which occurred at Beth Israel Medical Center after 9-11. This training, which occurred through commitment from AMTA, reached victims and caregivers through music experientials and trauma education. Participants will learn about music therapy techniques related to the impact of trauma such as how music affects the physiology of the trauma response and how channels of trust amidst fear and mistrust amongst communities can be opened through music therapy. 'Caregivers' includes both professionals and individuals personally affected by trauma. Emphasis is placed on how these two groups interface and how we, as music therapists must take care of ourselves in order to effectively take care of others. Uses of storysong, analytic music therapy, rounding, improvisation, song sensation and toning, as well as other options will be experienced. The impact that music therapy can hold in the face of terror for both caregivers and victims will be emphasized.

Pre-registration and fee required

Contact: Joanne Loewy, DA, MT-BC, 13 Arborlea Ave, Yardley, PA 19067

— Saturday, Sunday —

AMTA 4th Annual Conference ❖ 51

# SESSION SCHEDULE



7:00 am - 2:00 pm

LOBBY REGISTRATION

## Registration

8:00 am - 9:30 am

WALTON

### Affect Modification in Music Therapy: Clinical Relevance and Practice with Adults and Children

*Presenter(s): Judy R. Belland, MCAT, MT-BC; Kaori Kato, MM, MA*

*Presenter: Christine C. Wineberg, MT-BC*

Participants will learn the meaning and clinical relevance of affect modification. Expressive music therapy techniques appropriate for both adults and children will be described and demonstrated. Learn the results of research employing the Affect Modification Style of Music Improvisational Therapy.

*Contact: Judy R. Belland, MCAT, MT-BC, 709 West Jefferson Street, Bloomington, IL 61701-3830*

Recorded

Level: Professional

8:00 am - 9:30 am

FAYETTE/NEWTON

### Auditory Stimulation and Alternative Sounds in Music Therapy

*Presenter(s): Erica Rondina, MA; Frank Wagner, MA, CMT*

*Presenter: Rick Soshensky, MA, CMT*

The focus of the presentation is on the use of non-traditional and alternative sounds in music therapy. Flute, clarinet, trumpet, acoustic-bass, cello, and violin are some non-traditional instruments that can be used. Suggestions for

the applications of these instruments in a clinical setting will be discussed. Using these non-traditional sounds in music therapy will not only benefit the client and expand the space for growth and enrichment in their lives, but also allow the music therapist a wider variety of tools in the clinical treatment process.

*Contact: Erica Rondina, MA, 547 Bergen Street, Apt. 3C, Brooklyn, NY 11217*

Recorded

Level: Professional, Entry, Student

8:00 am - 9:30 am

HENRY

### Buddhist Psychology: Embracing the Wisdom and Confusion in Ourselves and Our Clients

*Presenter(s): Laurie G. Rugenstein, MMT, LPC, FAMI, MT-BC*

*Presenter: Susan Hess, MA, MT-BC*

This session introduces a Buddhist practice involving the "Five Wisdoms" and their confused, or neurotic, manifestations. Learning to let go of experiencing neurosis as an enemy leads to greater appreciation for the different aspects of ourselves, deeper compassion for our clients and more playfulness and freedom with what we encounter in music therapy sessions. This liberty also allows us become better music therapists.

*Contact: Laurie G. Rugenstein, MMT, LPC, FAMI, MT-BC, 43 Silver Sruce, Boulder, CO 80302-9604*

Recorded

Level: Professional

8:00 am - 9:30 am

ROCKDALE/FORSYTHE

### Educators Roundtable: Teaching Clinical Improvisation

*Presenter(s): Susan C. Gardstrom, MA, MT-BC; James M.*

*Hiller, MMT, MT-BC*

Where, when and how are the foundations and processes of Clinical Improvisation best taught and learned? Which musical and clinical skills are most relevant to entry-level practice and thus, most critical for undergraduate training? Is there an identifiable sequence and format in which these skills are best learned? These and other curricular questions about Clinical Improvisation instruction will be the focus of this session.

*Contact: James M. Hiller, MMT, MT-BC, 300 College Park Ave., Dayton, OH 45469-0290*

Level: Professional

8:00 am - 9:30 am

GRAND SALON E

### Examining Power and Control in Music Therapy with People Who Have Developmental Disabilities

*Presenter(s): Roia Rafieyan, MT-BC*

Participants in this session will examine power and control issues according to how they affect the lives of people with significant disabilities. Also, the presenter will discuss the therapist's often unconscious need for control within the music therapy context and examine how that need affects the therapeutic relationship, clinical decisions and interactions with the client.

*Contact: Roia Rafieyan, MT-BC, 1108 Normandy Ct., Flemington, NJ 08822*

Recorded

Level: Entry

8:00 am - 9:30 am

GRAND SALON C

### Family-Based Music Therapy for Children with Autistic Spectrum Disorders

*Presenter(s): Nicole R. Allgood, MEd, MT-BC*

Attendees will review literature related to family-based music therapy interventions for children with autistic spectrum disorders. The presenter will share data from two studies related to family-based music therapy. Strategies for educating parents about the music therapy process and strategies to promote family involvement in active music making will be shared.

*Contact: Nicole R. Allgood, MEd, MT-BC, 211 East Quincy Street, Westmont, IL 60559-1824*

Recorded

Level: Entry

8:00 am - 9:30 am

DEKALB/GWINNETT

### Gratitude: The Basics of Operating a Music Therapy Corporation

*Presenter(s): Hope E. Young, MT-BC*

*Presenter: Kathleen Coleman, MMT, MT-BC*

This presentation will introduce basic business principles, tools and models for operating a successful music therapy facility and corporation. An overview of a company's 12-year history, including landmark cases in receiving insurance

# SESSION SCHEDULE

company reimbursement for music therapy to its current status of a pre-approved provider, will be discussed.

Contact: Hope E. Young, MT-BC, 4016 Manchaca Road, Austin, TX 78759

Recorded

Level: Student, Entry, Professional

8:00 am - 9:30 am

GRAND SALON B

## Introduction to Reimbursement

Presenter(s): Roy Kennedy, MT-BC; Judy Simpson, MHP, MT-BC

In order to be successful in healthcare reimbursement, music therapists must first learn the industry language and mechanisms used to access insurance dollars. Take advantage of this opportunity to increase your knowledge of reimbursement and develop an understanding of where music therapy fits within this complex system.

Contact: Roy Kennedy, MT-BC, 157 Warren Way, Athens, GA 30605-6054

Level: Professional, Entry, Student

8:00 am - 9:30 am

GRAND SALON D

## Music Therapy as an Early Intervention

Presenter(s): Rana Zellner Burr, MT-BC

Many states are redesigning their early intervention programs in order to comply with Part C of the IDEA. This workshop will prepare music therapists with the information and skills they need to enter this area of practice, poised for inclusion along with occupational, speech, and physical therapy counterparts.

Contact: Rana Zellner Burr, MT-BC, 1818 South First Street, Kirksville, MO 63501

Recorded

Level: Entry

8:00 am - 9:30 am

GRAND BALLROOM EAST

## Music Therapy Groups with Inner City Children: From the Literal to the Symbolic

Presenter(s): Vanessa Camilleri, MT-BC

Music therapy groups progress through stages of increasing intimacy, each stage providing unique opportunities to work on specific goals.

Come discover music therapy methods that develop social skills and learn how these can slowly change and lead to exploration of group dynamics. See how music therapy of this type may enable group members to explore their own personal issues within the group context.

Contact: Vanessa Camilleri, MT-BC, 1629 Columbia Road, N.W., Apt. 127, Washington, DC 20009

Recorded

Level: Entry

8:00 am - 9:30 am

FULTON/COBB

## Music Therapy Techniques for Enhancing Speech Practice of Preschoolers with Cochlear Implants

Presenter(s): Mary E. Boyle, EdD, MT-BC; Sr. Mariam Pfeifer, MA, MT-BC; Peter M. Syslo

Presenter: Sr. Donna Marie Beck, PhD, FAMI, MT-BC

This presentation focuses on music therapy techniques to enhance the speech practice of preschoolers with cochlear implants. The presenters will be reporting data from a pilot study which examined speech practice with sign procedures embedded in age appropriate songs. The session integrates presentation of the procedures and data analysis with videotaped segments of the experiment and concludes with a question/answer opportunity.

Contact: Mary E. Boyle, EdD, MT-BC, 27 River Park Drive, New Paltz, NY 12561-2636

Recorded

Level: Professional, Entry

8:00 am - 9:30 am

DOUGLAS/PAULDING

## Techniques for Eliciting Exercise for Clients with Alzheimer's Disease through Music

Presenter(s): Andrea Marie Cevasco, MEd, MT-BC; Roy E. Grant, PhD, RMT

This will be an experiential session for eliciting and facilitating exercise for clients diagnosed with Alzheimer's Disease. Also, the presenters will share how this major research project was the result of observations in the struggle to get these clients to participate in exercise, and how

observations keep perpetuating the need for further research.

Contact: Andrea Marie Cevasco, MEd, MT-BC, 630 Riverhill Dr, Athens, GA 30606

8:00 am - 9:30 am

CARTER

## Verbal Processing in Music Therapy: Functions and Approaches

Presenter(s): Paul Nolan, MCAI, MT-BC

Presenter: Florence Ierardi, MM, MT-BC

Most music therapy experiences include verbal discourse before, during or after clinical music experiences. This experiential presentation will focus mostly upon the uses of verbal processes to further the continuation of client awareness and interpersonal processes resulting from the musical experiences in therapy and to lead back to the music to further the therapy process. Music therapy formats will include clinical improvisation, group singing, and song lyric discussion with adult populations.

Contact: Paul Nolan, MCAI, MT-BC, 5915 Pulaski Avenue, Philadelphia, PA 19144

Recorded

Level: Professional, Entry, Student

8:00 am - 9:30 am

GRAND SALON A

## What Goes On Emotionally During Music Listening: Identifying and Amplifying

Presenter(s): Hyun Ju Chong, PhD, MT-BC

Presenter: Alicia A. Clair, PhD, MT-BC

This presentation will discuss two different qualitative phenomena of responses in the affective domain, where music not only changes one's affect but also deepens one's preoccupied emotion. The session will introduce various perspectives on the relationship between emotional behavior and musical stimuli. Purposeful use of listening materials in the therapeutic setting will be addressed.

Contact: Hyun Ju Chong, PhD, MT-BC, EWHA Womans University, DAE Hyun dong 11-1 Suh Dae Mun Goo, Seoul, KOREA SOUTH 120-750

Recorded

Level: Professional, Entry



# SESSION SCHEDULE



9:45 am - 11:30 am  
ADAMS

## AMTA Executive Board

9:45 am - 11:45 am  
GRAND SALON E

## Conference Coda: Prioritizing and Planning

Presenter(s): *Betsy King Brunk, MMT, MT-BC*  
President: *Kamile O'Donnell, MT-BC*

Have you ever set aside the conference materials you collected, only to rediscover them months later? Come to this unique session and bring the notes, handouts, brochures and business cards you have accumulated. This session will help you sort them out and make specific plans to apply the things you have learned.

Contact: *Betsy King Brunk, MMT, MT-BC, 13716 Flagstone Lane, Dallas, TX 75240-5823*  
Level: Entry, Professional

9:45 am - 11:45 am  
FAYETTE/NEWTON

## Enriching the Therapeutic Process: Personal Perspectives of a Practicum Supervisor and Student

Presenter(s): *Nicki S. Cohen, PhD, FAMI, MT-BC; Kathryn Kalahan*

Learn to improve the therapeutic process by exploring a supervisory relationship with emphasis on the therapeutic and personal process of the supervisor, student and client. Selected video clips will act as catalysts for self-

disclosure. Clips will feature the piano-oriented, improvisation techniques employed with a child who has Dyslexia and Central Auditory Processing Disorder.

Contact: *Nicki S. Cohen, PhD, FAMI, MT-BC, 1505 Laurelwood Drive, Denton, TX 76209*

Recorded  
Level: Professional, Entry, Student

9:45 am - 11:45 am  
WALTON

## Graduate Research in Applications of Neurologic Music Therapy

Presenter(s): *Michael J. Ciecierski, MM, MT-BC; Aimee E. Hyland, MM, MT-BC; Dawn E. Kuhn, MM, MT-BC; Jessica L. Shaller, MM, MT-BC; Cathy Rivera Smith, MM*

This panel presentation will review current neurological music therapy research conducted by various graduate students of Colorado State University. Thesis projects presented will explore the effects of music on neurological processes within the sensorimotor, cognitive and affective domains. Discussion regarding ideas for future music therapy research will follow the presentation.

Contact: *Jessica L. Shaller, MM, MT-BC, 125 Sylvan Court, Fort Collins, CO 80521*

Level: Professional

9:45 am - 11:45 am  
FULTON/COBB

## Let's Work Together: Collaboration and Co-treatment with Other Disciplines

Presenter(s): *Brandi Jo Carson, MT-BC; Lillieth Grand, MS, MT-BC; Deborah Lee*

This session will focus on both collaboration and co-treatment of music therapy with occupational, physical, massage, speech, and aquatic physical therapy as well as psychology and education. The presenters will feature videotaped examples of both models and experiential activities. Some benefits of implementing these models will be highlighted.

Contact: *Brandi Jo Carson, MT-BC, 16922 Rockcreek Cir. #123, Huntington Beach, CA 92647-8310*

Recorded  
Level: Professional, Entry, Student

9:45 am - 11:45 am  
GRAND SALON B

## Music Therapy in Dementia Care: The Vital Role of Clinical Improvisation

Presenter(s): *Alla Braverman, MA, NRMT; Michele Schnur Ritholz, MA, NRMT, MT-BC*

This presentation will address the use of improvised music in individual and group therapy with early- to middle-stage dementia clients. Video excerpts will illustrate a creative process that can often uncover social, communicative, cognitive, and expressive capacities not evoked in other areas of the clients' lives.

Contact: *Michele Schnur Ritholz, MA, NRMT, MT-BC, 41 Euclid Ave, Hastings-On-Hudson, NY 10706*

Level: Professional, Entry, Student

9:45 am - 11:45 am  
ROCKDALE/FORSYTHE

## Proposing a Culturally-Sensitive Model for Music Therapy: A Contribution from Ethnomusicology

Presenter(s): *Ben Koen*

Ethnomusicology makes a unique contribution to music therapy by exploring traditional therapies within diverse cultures and contexts as well as by investigating the role of culture in musical meaning and affect. Drawing on original field research concerning traditional practices of music therapy in Tajikistan, a culturally-sensitive model of music-prayer dynamics is presented. Music, prayer, and a combination of them both are discussed within a framework of current research.

Contact: *Ben Koen, Ohio State University School of Music, 1866 College Road-Hughes Hall Rm 110, Columbus, OH 43210*

9:45 am - 11:45 am  
HENRY

## Refresh, Revamp, Renew: Making the Same Old Music New Again

Presenter(s): *Mary Jane Landaker, MT-BC*  
President: *Gina D. Hacker*

Tired of the same old music therapy activities? This workshop is designed to develop techniques to increase creativity and novelty for therapists

# SESSION SCHEDULE

and clients alike. Be prepared to sing, move, play and experiment with theory and creativity.

Contact: Mary Jane Landaker, MT-BC, PO Box 35, Perry, KS 66073-0035

Recorded

Level: Professional

9:45 am - 11:45 am

CHEROKEE

## Successful Approaches to Working with Mentally Ill/Chemically Addicted Persons through Music Therapy

Presenter(s): Kim Owens-Gamble, CMT

Presenter: Ginger D. Bennett, MT-BC

Working with mentally ill chemically addicted clients can be frustrating. As a clinician/music therapist, one should be knowledgeable of past and current treatment and issues in both the mental health and substance abuse fields. This session will address issues in working with this population. Case examples on video and audio tapes will be presented with a final section composed of an experiential session with comments and discussion to follow.

Contact: Kim Owens-Gamble, CMT, 4251 Camaron Way, Snellville, GA 30039

Recorded

Level: Entry

9:45 am - 11:45 am

GRAND SALON A

## Voice for Music Therapists

Presenter(s): Kathleen A. Moore, MT-BC

Presenter: Roberta Wigle Justice, MM, MT-BC

Because the voice reflects, with deep accuracy, the story and patterns of one's life experiences, it is mandatory for music therapists to give more focus to it. In this workshop, the presenter will attempt to fill some gaps in our training, practice and understanding regarding the voice in music therapy. Wear loose, comfortable clothing and bring a blanket to this didactic, experiential session.

Contact: Kathleen A. Moore, MT-BC, 408 W. Summit, Ann Arbor, MI 48103

Recorded

Level: Professional

12:00 pm - 1:00 pm

GRAND BALLROOM WEST

## Conference Wrap-Up featuring Jana Stanfield

2:00 pm - 7:00 pm

WALTON

## CMTE W. Reimbursement Facts from A to W

Presenter(s): Judy Simpson, MHP, MT-BC

How do you define active treatment? What are waivers? If you are looking for the answers to these reimbursement questions and everything in-between, then this course is for you. Come learn about healthcare financing to enhance your practice and prepare you to answer the nagging question: "Can music therapy be reimbursed?"

Pre-registration and fee required

Contact: Judy Simpson, MHP, MT-BC, 8455 Colesville Rd., Ste. 1000, Silver Spring, MD 20910

2:00 pm - 7:00 pm

CLAYTON

## CMTE X. Songwriting, CDs and Success

Presenter(s): Jana Stanfield

This workshop will explore the do's and don'ts of writing a great song, how to make your own CDs, and finding success in the music business by marketing and selling your music. It is intended for music therapists to use the knowledge gained with their client groups, as well as to nurture their own individual musical talent. Reliable resources for further information will be provided.

Pre-registration and fee required

Contact: Jana Stanfield, c/o Keynote Concerts, 824 N. Woodstone Lane, Nashville, TN 37211

2:00 pm - 7:00 pm

CHEROKEE

## CMTE Y. Action Research: A Clinician's Tool

Presenter(s): Colleen Conway, EdD; David W. Luce, PhD, MT-BC

Music therapists are directly involved with clients and consistently evaluate therapeutic process to inform their clinical practice. Yet, these experiences are too often unreported in the literature. Clinicians will learn how to use and develop action research methods for strategic planning, program advocacy, and to enhance clinical practice.

Pre-registration and fee required

Contact: David W. Luce, PhD, MT-BC, 2111 Hazel Street, Oshkosh, WI 54901

2:00 pm - 7:00 pm

GRAND SALON B

## CMTE Z. The Art of Creative Perception: Applications of the Three Assessment Scales in Nordoff-Robbins Music Therapy

Presenter(s): Kenneth S. Aigen, DA, MT-BC; Clive E. Robbins, DHL, DMM, MT-BC

In the Nordoff-Robbins approach, developing the ability to listen creatively to a client's musical expression is an essential part of being able to create music with the client. The ability to listen can be developed through learning how to apply the three assessment scales that have evolved from the practice of Creative Music Therapy: Client-Therapist Relationship in Music Activity, Musical Communicativeness, and Musical Response. In this CMTE/presentation attendees will be introduced to theory, origins, and applications of these three scales and have the opportunity to use the scales in practice as they listen to and view audio and videotapes of music therapy sessions.

Pre-registration and fee required

Contact: Kenneth S. Aigen, DA, MT-BC, 50 Hudson Street, Hastings-on-Hudson, NY 10706



— Sunday —

# CONFERENCE OFFICIALS

## CONFERENCE MANAGEMENT STAFF

### Executive Manager

Andrea Farbman, EdD

### Conference Manager

Al Bumanis, MT-BC

### Exhibits Coordinator

Jane Creagan, MME, MT-BC

### Graphic Designer/Administrative Services Manager

Angie Elkins, MT-BC

### Administrative Coordinator

Judith Kaplan, MEd

### Public Relations Coordinator

Judy Simpson, MHP, MT-BC

### Registration Manager

Cindy Smith

### Registration/Exhibit Booth Assistant Manager

Rebecca Smith, BA

### AMTA Exhibit Booth Coordinator

Dianne Wawrzusin, MMT, MT-BC

### Special Events Coordinator

Tamara Zavislan, MMT, MT-BC

## PROGRAM REVIEW COMMITTEE:

Michelle Hairston, EdD, MT-BC

Michele Erich, MM, MT-BC

Ed Kahler, PhD, MT-BC

Copy Editor: April Hames

## LOCAL ARRANGEMENTS COMMITTEE

### Local Committee Co-Chairs

Amber S. Weldon-Stephens, EdS, MT-BC

Ginger D. Bennett, MT-BC

### Volunteer Committee

Melissa C. Worden, MM, MT-BC, Chair

Alanna Barber, MM, MT-BC

Rachel Bruschi

Shu M. Che, MT-BC

Angela R. Chitwood

Erin L. Jones, MT-BC

Laura S. Lenz, MT-BC

Emily K. Smith, MT-BC

Melissa Steedley

### Instrument Committee

Elizabeth A. Hampshire, MT-BC, Chair

Rebecca D. Blanchard, MT-BC

Rachael Horn, MT-BC

Angela M. Negri, MT-BC

Dana Lee Smith, MT-BC

Meredith D. Taylor, MT-BC

### Student Committee

Mary Lokey, MMT, MT-BC, Chair

Lalah E. Manly, MM, MT-BC, Chair

### Outreach Committee

Elizabeth Herr, MT-BC, Chair

### Public Relations Committee

Carol Statella, MME, MT-BC, Chair

### Entertainment Committee

Roy Joyner, MM, MT-BC, Chair

Stephanie Davis, RMT

Darren Holbrook, DMA, MT-BC

Danny James, MT-BC

Rebecca James, MT-BC

Roy Kennedy, MT-BC



# EXHIBIT HALL

Companies large and small are coming together to offer the finest products and services to conference attendees in one incredible showplace. The first official conference activity begins on Thursday afternoon when the exhibit hall opens from 2:30 pm-5:00 pm. On Thursday evening following the opening session, the conference kicks off with a fun filled evening featuring the Grand Opening of the Exhibit Hall, Silent Auction and Masquerade Party. The 4th Annual AMTA Conference features over three hours of unopposed time in the exhibit hall, called the *Exhibit Spectaculars*. On Friday from 11:00 am-1:30 pm, and on Saturday from 12:15 pm-1:30 pm there are no sessions competing with the exhibits, so conference attendees will be able to spend time visiting the exhibits.

Shop  
'Til You  
Drop in the  
Exhibit Hall

## Associations/Agencies

- Center Island—American Music Therapy Association (AMTA)
- Booth 20—Association for Music & Imagery
- Booth 17—Big Brazos Children's Center
- Booth 70—Celebration Shop, Inc.
- Booths 58-59—Certification Board for Music Therapists†
- Booth 56—Music Therapy Association of Georgia
- Booth 14—National Library Service for the Blind & Physically Handicapped

## Association Members

- Booths 1-3—Prelude Music Therapy Products\*
- Booths 1-3—SouthernPen Publishing
- Booths 1-3—American Music Therapy Association for Students (AMTAS)

## Early Childhood

- Booths 35-36—Kindermusik International
- Booth 37—Music Together, LLC

## Keyboard/Electronic Instruments

- Booth 69—Lowrey Organ Company†

## Music Companies/Publishers

- Booths 71-73—Brook Mays Music Company†
- Booth 29—General Music Store†
- Booth 15—Jessica Kingsley Publishers†
- Booths 25-28—MMB Music, Inc.†
- Booths 21-24—Music is Elementary\*
- Booths 12-13—Suzuki Musical Instruments\*
- Booths 44-47—West Music Company†

## Music Industry

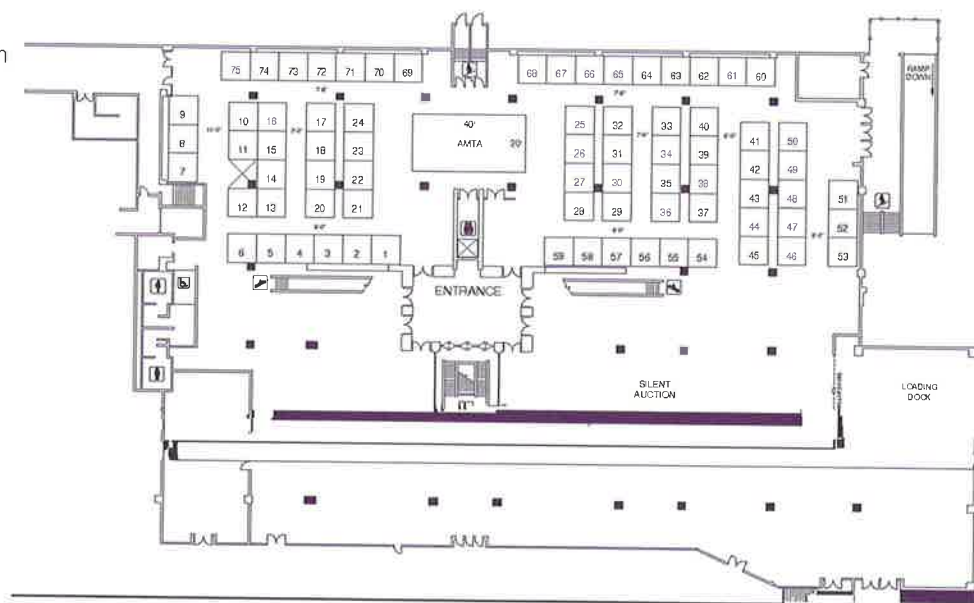
- Booth 57—NAMM International Music Products Association/American Music Conference
- Booth 55—National Academy of Recording Arts and Sciences/MusiCares

## Percussion

- Booth 5—Be'Zed
- Booth 32—Coyote Moon Music
- Booths 41 & 50—REMO, Inc.†/Health Rhythms
- Booth 67-68—Thunder Studio/Boing Klankoerper

## Regions/Schools

- Booth 18—Drexel University/Hahnemann CAT Program
- Booth 16—Lesley University
- Booth 6—Mid-Atlantic Region of AMTA
- Booth 4—Naropa University
- Booth 19—New York University/Nordoff-Robbins Music Therapy Center
- Booth 30—Saint Mary-of-the-Woods College
- Booth 33—Sam Houston State University
- Booth 34—Western Michigan University
- Booth 31—University of Missouri-Kansas City



List complete as of publication

† denotes AMTA Patron Member

\* denotes AMTA Affiliate Member

# CONFERENCE EXHIBITORS



## American Music Therapy Association (AMTA)

CENTER ISLAND

The American Music Therapy Association is committed to the advancement of education, training, professional standards, and research in support of the music therapy profession. Official publications include: the Journal of Music Therapy, a quarterly research oriented journal, Music Therapy Perspectives, a semi-annual practice oriented journal, a quarterly newsletter, and a variety of other monographs, bibliographies, and brochures. AMTA products and materials will be featured at the booth. Special conference books and CDs of special guests as well as new products and instruments will also be available for purchase at spectacular prices.

*Representatives: Dianne Wawrzusin, Jane Creagan, Rebecca Smith*

### \*Association Members (booths shared by multiple members)

BOOTHS 1-3

### \*Prelude Music Therapy Products

Prelude Music Therapy offers low cost, practical materials for music therapists who work with children and adolescents with developmental disabilities. Materials include resource books, and character building materials, eligibility assessment book, song and visual aid books, and accompaniment tapes.

*Representatives: Kathleen Coleman, Betsey Brunk*

### \*SouthernPen Publishing

SouthernPen Publishing provides music therapy resources for students, clinicians, and educators. The new Music Therapy Assessment Handbook provides an extensive overview of the music therapy assessment process. In honor of music therapy

pioneer Bob Unkefer, 5% of the proceeds from the sale of the Music Therapy Assessment Handbook at this conference will be donated to the Robert F. Unkefer Endowed Music Therapy Scholarship at Michigan State University. Also available, Life Imprint: Expressions of Youth, a CD compilation of songs written by children with cancer and other medical issues in their music therapy sessions at Hershey Medical Center. Proceeds will benefit the National Cancer Society Children's Miracle Network.

*Representatives, Kristen Cole, Nicolas Cole*

## Association for Music & Imagery (AMI)

BOOTH 20

The Association for Music & Imagery was created to maintain and uphold the integrity of the Bonny Method of Guided Imagery and Music, a music-centered, transformational therapy which uses selected classical music to stimulate and support a dynamic unfolding of inner experiences and to promote physical, psychological, and spiritual wholeness. Products available at the booth will include AMI Journals (1-7), Helen Bonny video, and information on Bonny GIM Training Programs.

*Representatives: Jennie Band, Jim Borling, Linda Powell*

## Be'Zed

BOOTH 5

Be'Zed is music therapist Alain Lauzon, who has developed a passion for making high quality musical instruments since his debut with precision tuned flutes and durable flutes. Alain now has handcrafted

hardwood shakers, guiros, wood blocks, claves, loon calls, bull roars, celtic whistles, and cajon drums.

*Representatives: Alain Lauzon, Lyne Beshler-Lauzon, Delia Chariker, Diane Koehler*

## Big Brazos Children's Center

BOOTH 17

Big Brazos Children's Center, a non-profit organization, is dedicated to creating opportunities for children and young people to enrich their education and talents through music, arts, science, and nature, as well as providing assistance in other subject matters. Our goal is to provide educators with supportive and structural curriculum to encourage the enrichment and learning of each student. World instruments, books, CDs/tapes, and more (crafts from third world countries related to the music industry).

*Representatives: Rachel Day, David Benford*

## Brook Mays Music

BOOTHS 71-73

Brook Mays Music is the largest full line music retailer in the country. Brook Mays employs full and part time music therapists. We offer the best selection of instruments and software, at the guaranteed lowest prices, with help from a most knowledgeable staff. A selection of midi-keyboards, computer music software for therapists, and their clients, plus drums, guitars, Omnichords, and other instruments will be available.

*Representatives: Julie Romeo, Daniel Tague, Amy Zang*



# CONFERENCE EXHIBITORS

## **Celebration Shop, Inc.**

BOOTH 70

Celebration Shop Inc., is a non-profit organization, which provides healing experiences for the special needs of children of all ages through performing arts and media. Jim Newton & Paul G. Hill tour children's hospitals throughout North America providing songs of healing and hope. Noel Paul Stookey (of "Peter, Paul, & Mary") is the Producer of Celebration Shop's award-winning resources. Products at the exhibit booth will feature audio resources for children including "Best I Can Be," "We Can Do," and "World Around Song." These recordings are entertaining and comforting, and have received 5 national and 1 international children's music awards. They are available in both English and Spanish and in songbook form.

*Representatives: Jim Newton, Paul G. Hill, Lisa Jones*

## **Certification Board for Music Therapists (CBMT)**

BOOTHS 58-59

The Certification Board for Music Therapists is the national certifying body for the profession of music therapy. Accredited by the National Commission for Certifying Agencies, CBMT's mission is to define the body of knowledge that represents competent practice in the profession of music therapy; create and administer a program to evaluate initial and continuing competence of this knowledge; and to issue the credential of MT-BC to individuals who demonstrate the required level of competence. Representatives will be available to answer questions and provide materials related to CBMT programs.

*Representatives: Joy Schneck, Lee Anna Rasar, Celeste Behnke, Michele Ritholz, Diana Ice*

## **Coyote Moon Music**

BOOTH 32

Coyote Moon Music features hand made musical instruments and wind chimes, using natural, renewable, and recycled materials. Adaptive instrument building is available, as well as our new line of jewelry. Products at the booth will include tongue drums, Native American Style flutes, thumb pianos, rattles, shakers, hand percussion instruments, wind chimes, and hand made jewelry.

*Representatives: Cynthia White, Bianca Bova, Brenda Norris*

## **General Music Store**

BOOTH 29

The General Music Store, a division of the Woodwind & Brasswind music company in South Bend, IN, is able to provide a variety of therapy instruments, publications, and accessories for the student and the classroom. Please visit us on the web at [www.wbw.com](http://www.wbw.com) or call us at 1-800-346-4448 for more information.

*Representatives: Phyllis Kohlenberg, Scott Kautzer*

## **Hahnemann Creative Arts in Therapy Program**

BOOTH 18

The Hahnemann Music Therapy Program offers the Master of Arts Degree. The program fulfills the educational requirements for Licensed Professional Counselors in Pennsylvania. The two-year program



offers advanced clinical education from a faculty of music therapists, other creative arts therapists, physicians, psychologists, and scientists. Application materials will be available in the exhibit booth.

*Representatives: David Oldham, Joclyn Fish, Rebecca Browning*

## **Jessica Kingsley Publishers**

BOOTH 15

Jessica Kingsley Publishers is a leading publisher of high-quality books on Music Therapy. Please stop by our booth and browse our selection of new and recent titles.

*Representative: Sarah Werner*

## **Kindermusik International**

BOOTHS 35-36

Kindermusik is the leading program in children's music and movement (ages 0-7 years). The programs are based/ founded/focused on the development of the whole child (emotionally, socially, cognitively, physically, and linguistically) through music. We are dedicated to creating musical children as opposed to childhood musicians. Products available include training materials, and research based guides explaining how Kindermusik curricula is beneficial to the development of the whole child through music.

*Representative: Robin Gentile, Debra Ponder*

## **Lesley University**

BOOTH 16

Lesley University, in Cambridge, MA offers an AMTA-approved MA in Expressive Therapies with specialization in Music, Dance, and Art Therapies, plus a PhD in Expressive Therapies.

Training is in both expressive therapies and music therapy. MA graduates are eligible for certification from CBMT and licensure as mental health counselors in Massachusetts.

*Representative: Carylbeth Thomas*

## **Lowrey Organ Company**

BOOTH 69

The Lowrey Organ Company offers a complete line of organs-models designed and built for the hobby player. Lowrey offers home organs for the first time player, the most sophisticated hobby player, and all points in between. Easy-play technology, lush organ sounds, authentic instrumental sounds, elegantly crafted furniture-style cabinets combine to make Lowrey the #1 name in home organs. The Lowrey "Wellness Enhanced" organ course, designed for adults, helps people discover the joy and satisfaction of making their own music. Lowrey Magic seamlessly incorporates components of the Six-Minute Module to provide class members with the opportunity to benefit from wellness activities while comfortably building musical ability and confidence.

*Representatives: Mel Wisniewski, Ellen Gonzales, Amy Zang*

## **Mid-Atlantic Region of AMTA**

BOOTH 6

The purpose of the Mid Atlantic Region of AMTA is to advance the use of music for restoring, maintaining, and improving mental and physical health; to train and



# CONFERENCE EXHIBITORS

educate music therapists; to advance and support research about music therapy; and to provide a forum for the exchange and publication of information about music therapy. Brochures will be available as well as information related to the mission of the MAR including history and photographs.

*Representative: Michael Rohrbacher*

## **MMB Music, Inc.**

BOOTHS 25-28

MMB is a major publisher and distributor of books, videos, and recordings for the creative arts in wellness, music education, including pre-and elementary school, and parenting. MMB is the sole USA agent for Studio 49 Orff instruments and offers the MidiCreator sound system for physical and creative therapy. MMB Music-the complete, one stop resource for creative arts therapists. Books, videos, and recordings for the creative arts to enhance the quality of life in wellness, education, and parenting will be available at the booth.

*Representatives: Marcia Lee Goldberg, Norman Goldberg, Ragini Ray, Sarah Rosegrant*

## **Music Is Elementary**

BOOTHS 21- 24

Music is Elementary is a provider of musical instruments and curricula for use in music therapy and music education. Music is Elementary is a provider of Orff musical instruments, Music Therapy materials, World Music and Cultural Drumming.

*Representatives: William Johnson, Sam Marchuk, Ron Guzzo, Shawn Potochar*

## **Music Therapy Association of Georgia, Inc.**

BOOTH 56

The Music Therapy Association of Georgia is a group of professionals and students whose mission is to educate parents, caretakers, other health care professionals, doctors, educators, and the general



public about music therapy and to promote the professionalism of music therapists. Products available at the booth include CD's of local music therapists and entertainment CD/books from the Georgia College & State University music therapy program, t-shirts from the University of Georgia music therapy program, as well as literature from both universities.

*Representatives: Ginger Bennett, Meggan Cooper, Chris Nokfi, Allison Jarrell*

## **Music Together, LLC**

BOOTH 37

Music Together, the national, original research-based music and movement program for newborns through age five, was designed in 1987 to provide developmentally appropriate experiences for children with their care-givers. Music therapists have used the program for decades with all ages because the music is fun and sophisticated. Workshops, music, and extensive teacher support available. Please visit our web site at [www.musictogether.com](http://www.musictogether.com).

*Representatives: Jennifer Paulino, Ashley Herron Scott*

## **National Academy Recording Arts and Sciences (NARAS)- Atlanta Chapter**

BOOTH 55

The "parent organization" of the charitable MusicCares Foundation and Grammy Foundation, the Academy works to protect and support music people in crisis. MusicCares' primary goal is to focus the attention and resources of the music industry on human services issues that directly impact the health and welfare of music people.

*Representatives: Michele Caplinger, Erin McAllister, Brad Litton*

## **NAMM- International Music Products Association/ American Music Conference**

BOOTH 57

NAMM, International Music Products Association represents 7,700 member companies worldwide, consisting of music products manufacturers and retailers. Our mission is to unify, lead and strengthen the global music products industry and to increase active participation in music making. AMC-The American Music Conference is dedicated to promoting the importance of music, music-making, and music education to the general public. Music



making and wellness kits and music advocacy materials will be available at the exhibit booth.

*Representatives: Kim Sammons, Laura Johnson, Sharon McLaughlin*

## **Naropa University**

BOOTH 4

Naropa University offers a master's degree in Transpersonal Counseling Psychology with a concentration in Music Therapy. This degree prepares graduates for LPC licensure in Colorado and for Music Therapy Board Certification. Naropa is located in Boulder Colorado at the foot of the Rocky Mountains. It is based on a philosophy and tradition of contemplative education. Brochures and other printed materials about the Naropa University music therapy program will be available at the exhibit booth.

*Representatives: Laurie Rugenstein, Mary Erickson, Susan Hess*

## **National Library Service for the Blind and Physically Handicapped**

BOOTH 14

The National Library Service for the Blind and Physically Handicapped, Library of Congress, provides free braille and recorded books and magazines, catalogs and bibliographies, music scores, and music instruction material free for blind and physically handicapped persons. Talking book players and accessories necessary to use the cassettes and records are also provided without cost.

*Representative: John Hanson*

# CONFERENCE EXHIBITORS



## **New York University/Nordoff-Robbins Center for Music Therapy**

BOOTH 19

This booth will include materials on NYU's Masters and Doctoral programs in music therapy and will afford the opportunity to speak with members of the faculty. It will also include materials on the Nordoff-Robbins Center for Music Therapy with information on its certificate training program, summer courses, and research program. Books, videos, and other instruction materials will be available.

*Representatives: Kenneth Aigen, Jacqueline Birnbaum, Alan Turry, David Marcus*

## **Remo, Inc/Health Rhythms**

BOOTHS 41 & 50

We believe in the therapeutic value of music. Remo is dedicated to providing facilitators, therapists, and all participants with the best quality percussion instruments available. We offer an ever-expanding line of life enhancement tools we call drums featuring world percussion, kids percussion, and drum accessories. Come by and talk with the facilitators and music therapists at our booth. World percussion featuring our newest product invention to help music therapists: Sound Shapes will be available as well as a video featuring information on the Use of Product in Therapy. A focus of this years' booth will be on sharing information about percussion, therapy, and wellness.

*Representatives: Christine Stevens, Remo Belli, Ami Belli, Sue George, Deb Bradway, John Scalia*

## **Saint Mary of the Woods College**

BOOTH 30

Saint-Mary-of-the-Woods College in Indiana offers an MA Degree in Music Therapy in a distance format.

Students spend limited time on campus, and train with experts in Improvisation, GIM, Music Psychotherapy, and Counseling. Faculty and students will be available to answer questions about the MA, equivalency, and undergraduate programs at the Woods. Brochures and admission packets will be available at the booth.  
*Representatives: Tracy Richardson, Annette Pleau, Leslie Meadows*

## **Suzuki Musical Instruments**

BOOTHS 12-13

Suzuki Corporation offers a complete set of unique and innovative products to make the music learning process fun and rewarding! Instruments include Precorders, Recorders and books, Orff Instruments, Rhythm Instruments, Drums and Percussion, Tone Bell Sets, Melodians, Slit Log Drums, Chimettes, Tone Chimes, BigFoot Keyboard and the amazing Qchord.  
*Representatives: Gregory Matthews, Frank Leto, Pilar Leto, Gabriela Matthews*

## **Thunder Studio & Boing Klangkoerper**

BOOTHS 67-68

For 16 years Thunder Studio has built Plains Indian hand drums (13"-22") and pow wow table drums (26" or 36") out of the finest hand-picked red oak and quality rawhide. All of our hoops are made with a single band of red oak which creates an incredible and superior resonance. Each drum has a life long guarantee on the hoops. A couple of years ago we collaborated with Ingo Boehme (Boing Klangkoerper) from Germany. Mr. Boehme founded his company in 1982, starting with a small workshop and now produces over 60 different instruments of 14 different types. Mr. Boehme is also an enthusiastic musician who enjoys playing his own instruments, so every instrument is built with the experience of the musician and the instrument maker. Hand crafted Native American drums, kalimbas, marimbas, tuned cymbals, gongs, singing bowls, foot bells and more will be available at the booth.

*Representatives: Gabriele Schwibach, Bow LaLand*

## **University of Missouri-Kansas City**

BOOTH 31

The University of Missouri-Kansas City Conservatory of Music is part of a comprehensive urban university providing undergraduate and graduate Music Therapy degrees. These programs are an intricate part of UMKC's commitment to a liberal and

professional education with an emphasis in the area of health sciences as well as the performing, interpretive and visual arts. Music Therapy degree program information, conservatory, and UMKC information and applications will be available.

*Representatives: Robert Groene, Sheri Robb, Jaime Young*

## **West Music Company**

BOOTHS 44-47

West Music provides an eclectic blend of materials for music therapists-books, recordings, props, and instruments. On staff music therapists develop and promote adaptive materials as well as provide consultation on purchases. Remo drums of all shapes and sizes, Sonor Orff instruments, classic and modern hand percussion, adaptive instruments, activity sourcebooks, texts, songbooks, recordings, Q chords, tone chimes, and much more will be available at the booth.

*Representative: Judy Pine*

## **Western Michigan University Student Music Therapists' Association**

BOOTH 34

The Student Music Therapists' Association at Western Michigan University is a student run organization which exists as a support group for students entering the music therapy profession. As an organization, we meet to share ideas for music therapy sessions, we strive to inform the surrounding community about music therapy as a profession, and we continue to expand our educational foundation through national and regional conferences. Window decals, music therapy activity books compiled by WMU students, tote bags, and printed materials about SMTA will be available at the booth.

*Representative: Christy Irwin*



# ACKNOWLEDGEMENTS

**Thank you  
a hundred times over!!!**

*...from the Conference Chair*

**P**lanning a conference program is a job that involves the efforts of many, many people. I have had outstanding people to work with and am forever indebted to them. The Local Chairs have had the brunt of the work, and without them no Vice President could successfully plan a conference! I would like to extend my sincerest thanks to **Amber Weldon-Stephens** and **Ginger Bennett** for heading up the local committee and working tirelessly to complete their tasks. The individual committees, headed up by **Melissa Worden, Elizabeth Hampshire, Roy Joyner, Carol Statella, Mary Lokey, Lalah Manly,** and **Elizabeth Herr**, did a fabulous job. Their hard work and dedication to music therapy has been incredible. Please give them a big thank you as you see them working around the conference.

As always, the national office continues to be a vital link to a successful conference. **Al Bumanis** was wonderful to work with and has many good ideas to share that make the Vice President's job very easy. Other office staff members, **Angie Elkins, Andi Farbman, Judy Kaplan, Tami Zavislan, Jane Creagan, Judy Simpson, Cindy Smith, Dianne Wawrzusin,** and **Becky Smith** are wonderful to work with and take care of the myriad of details that make the conference run smoothly.

A special thanks goes to **April Hames** who edited the abstracts for the final conference program. She spent an enormous amount of time making sure they were ready and accurately reflected what the sessions would cover. Also, thanks to **Barbara Wheeler**, Vice-President elect, for her willingness to help in any way that she could.

A big thank you goes to all of you who submitted proposals. Without you, there would be no conference. Thank you for sharing your expertise with other professionals and working with all of us to make the conference great!



# CONFERENCE SPONSORS

Bronze  
Sponsor:

**REMO, Inc.**

Fender  
Musical  
Instruments

**MMB  
Music,  
Inc.**

**Thank You!!!**

Yamaha  
Corporation  
of  
America

Mason  
Williams

Deering  
Banjo  
Company

West  
Music  
Company

Roland  
Corporation  
U.S.

# ADVERTISEMENTS

---

# Music Therapists:

Want to raise the bar on your clinical practice?

Exploring a variety of job options to insure your future?

Want to earn pre-approved, inexpensive CMTE credits?

**Check out our popular self-study courses :**

**Music Therapy Toolbox: Autism** – *Moving from Isolation to Interaction*

**Music Therapy Toolbox: Medical Settings** – *Strategies, Applications, and Sample Forms*

**Music Therapy Toolbox: Developmental Disabilities** – *Mapping a Clear Route*

**You're the Boss** – *Self-Employment Strategies for Music Therapists*

**In Harmony** – *REVISED Strategies for Group Music Therapy*

**Job Impact** – *REVISED Professional Self-Study Course*

**Let's Talk** – *Music Therapy Strategies to Facilitate Communication*

**Music Works** – *A Professional Notebook for Music Therapists 3<sup>rd</sup> Edition*

**Music Therapy Mentor Network** – *FREE unlimited mentoring services*

**music therapy e-toolbox:** *check out our inexpensive on-line courses*

## **Music Works Publications**

1250 Ollie Street

Stephenville, TX 76401

254-968-2882

WEB: [www.MusicWorksPublications.com](http://www.MusicWorksPublications.com)

e-mail: [CathyKnoll@MusicWorksPublications.com](mailto:CathyKnoll@MusicWorksPublications.com)

*Music Works Publications offers quality professional materials and services developed by experienced clinicians to expand the expertise and to meet the needs of professionals in music therapy and related fields.*

**Cathy Knoll, MT-BC**

**Dellinda Henry, MM, MT-BC**

**Barbara Reuer, PhD, MT-BC**

**Tom Dolan**



# Marywood

UNIVERSITY

## *education* *of note for over 85 years*

Marywood is an independent, comprehensive university with a long-standing reputation for excellence in music, art, education, psychology/counseling, and multi-disciplinary programs that harmonize beautifully with your plans for a career in music therapy. Marywood's outstanding offerings can lead to...

### ***Bachelor of Music Degrees***

in Music Therapy, Music Education,  
Performance, and Church Music

### ***Master of Arts Degrees***

in Music Education, Church Music, and Musicology

### ***Graduate Degrees***

in Psychology/Counseling, Education,  
Gerontology, and Special Education

### ***Doctoral Degrees***

(Ph.D.) in Human Development with specializations  
in Counseling/Psychology, Education, and Social Work

***For more information about programs, audition dates,  
music scholarships or financial aid, contact:***

Marywood University, Department of Music  
2300 Adams Avenue • Scranton, PA 18509 • (570)348-6211

[www.marywood.edu](http://www.marywood.edu)

**WHERE LEARNING BECOMES LEADING.**

# DUQUESNE UNIVERSITY MARY PAPPERT SCHOOL OF MUSIC

*Education for the Mind, the Heart and the Soul*

Distinguished Faculty

**Sr. Donna Marie Beck, Ph.D., FAMI, MT-BC**

**Linda Sanders, MRE, MT-BC**

**Sr. Charleen Pavlik, Ph.D., LSW, MT-BC**



For more information, please contact:

**Sr. Donna Marie Beck, Ph.D., FAMI, MT-BC**

**Mary Pappert School of Music**

**Music Therapy Department**

**Duquesne University**

**600 Forbes Avenue**

**Pittsburgh, PA 15282**



**DUQUESNE  
UNIVERSITY**



*The Center for  
Music  
Therapy, Inc.*

# Announcing the Opening of Allant International Institute

it's purpose is to  
**Advance clinical practice**

by

**Creating a professional forum  
for the  
Merger of research, clinical practice  
and on going training**

4016 Manchaca Rd Ph: (512) 447-8185  
Austin, TX 78704 Fax: (512) 447-4198  
website: centerformusictherapy.com

## Allant International Institute Offerings for 2003

### I. Simple Abundance: Principles & Practice of Owning and Operating a Music Therapy Company

Dates: June 12-15, 2003  
Cost: \$800.<sup>00</sup> Due 4/4/03  
Early Bird Reg Fee: \$600.<sup>00</sup> by 01/31/03

led by:  
Hope Young, MT-BC President, The Center for Music Therapy, Inc.  
Jamie Johnson, Financial Advisor/Consultant  
President, Lifestyle and Money Management

### II. Applied Neurologic Music Therapy Clinical Training: Adults/Children

Dates: July 24-27, 2003  
Cost: \$650.<sup>00</sup> Due 5/2/03  
Early Bird Reg Fee: \$450.<sup>00</sup> by 01/31/03

led by:  
Hope Young, MT-BC, Amy Thompson, M.M., MT-B  
Stefanie Anderson, MT-BC, J. Douglas Hudson, M.D.

\* Free limited housing at The Center is available to workshop participants\*

**For more information or to register, please visit our website @: [centerformusictherapy.com](http://centerformusictherapy.com)**

#### Registration Form

Name: _____		Amount Enclosed
Address: _____	Workshop I ____	\$ _____
Phone#: _____	Workshop II ____	\$ _____
E-Mail: _____	(please check which workshop you are registering for)	Total \$ _____



SAINT MARY-OF-THE-WOODS COLLEGE  
MASTER *of* ARTS  
*in* MUSIC THERAPY

Get Your Master's ...

*Keep Your Life*



SAINT MARY-OF-THE-WOODS COLLEGE  
MASTER OF ARTS IN MUSIC THERAPY PROGRAM

- Distance Education Format
- Spend Limited Time On Campus
- Study With Experts In The Field
- Develop Skills In Improvisation, GIM, and Counseling
- Finish In 2.5 Years

---

"I love the Music Therapy Program at Saint Mary-of-the-Woods College because it allows me to continue my music therapy practice, apply my music therapy experience to my classwork, and seek answers to my clinical questions through the reading, classwork, and interactions with the professors."

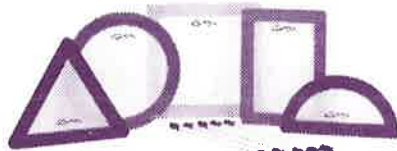
*-Annette Pleau, MT-BC, Dorchester, Mass.*

SAINT MARY-OF-THE-WOODS COLLEGE  
mamt@smwc.edu • 812-535-5154 • www.smwc.edu

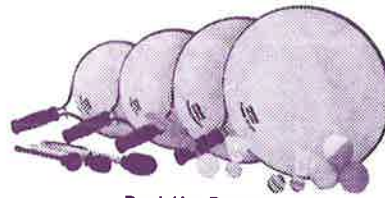
Acousticon™ Ambassador™ Black Dot™ Black Max™ Clear Dot™ Controlled Sound™ Diplomat™ Djembé

# health rhythms

the average human heart  
beats 86,300 times a day.  
**not enough.**



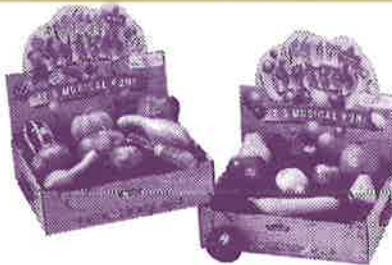
Sound Shapes™



Paddle Drums



Rainbow Tubano



Fruit & Veggie Shakes®



Festival Djembe

If you have a pulse, you have rhythm.  
And we have over 4,000 ways to help you find it.



The world's drum company can be found at [remo.com](http://remo.com)  
Click on HealthRHYTHMS for Drumming for Wellness, Research and Training Programs

RotoTom™ Ring Control Renaissance™ RemO RattleStix ProPack Powerstroke™ Pinstripe™ Ocean Drum™

White Max™  
White Dot™  
Weatherking™  
Veggie Shake®  
Tuff-E-Nuff™  
Thunder Tube  
Suede™  
Spring Drum  
SportMallet  
Sound Control  
RotoTrac

Dynamax™  
Dynamo  
Ebony™  
Emperor™  
Encore™  
Falams™  
Fibersyn®  
Fruit Shake®  
Jingledrum  
MasterEdge™  
Muffin™  
NuSkyn™



**DREXEL UNIVERSITY'S  
HAHNEMANN CREATIVE ARTS  
IN THERAPY PROGRAM  
Music Therapy**

---

The Graduate Music Therapy Program, part of the rich tradition of the Hahnemann Creative Arts in Therapy program, offers the M.A. degree within a university health center.

Advanced music therapy clinical training emphasizes, improvisation methods, music developmental models, theories of music therapy, developmental music therapy, and group and community music therapy.

Research opportunities include music therapy in psychotherapy, general hospital settings, educational settings, physiological and neurological responses to music, and many other applications developed by the student's creativity.

**BECOME A PART OF OUR  
TRADITION OF EXCELLENCE**

**CALL (215) 762-6924**

Drexel University  
Hahnemann Creative Arts in Therapy Program  
Mail Stop 905  
245 North Broad Street  
Philadelphia, PA 19102-1192





**MusiCares**

## For Music People

Financial Assistance and  
Addiction Recovery Services  
for Music People in  
Medical, Financial or Personal Crisis.

FOR TOTAL CONFIDENTIALITY, CALL TOLL FREE,  
24 HOURS A DAY, 7 DAYS A WEEK:

NORTHEAST  
1(877)303-6962

CENTRAL  
1(877)626-2748

WEST COAST  
1(800)687-4227

Please visit us at [GRAMMY.com](http://GRAMMY.com)

# New Dimensions in Sound Healing™

“Steven Halpern is a musical magician, a healer with sound. His music has helped millions experience transformative moments that lead to greater wholeness and happiness.

“Music is one of the most powerful forces available to humans, and Halpern wields this medium with immense skill.”

— LARRY DOSSEY, MD, author of *Reinventing Medicine and Healing Words*

## MUSIC for SOUND HEALING



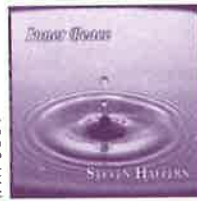
IPM 7878  
The definitive collection, specially sequenced to enhance the healing effect. Keyboards, flute, harp, angelic choir.

## CHAKRA SUITE



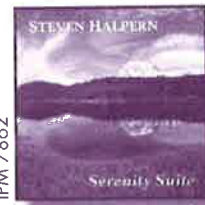
IPM 8000  
Sonically resonates and tunes the chakras. Expands upon the classic SPECTRUM SUITE. Solo electric piano and beyond.

## INNER PEACE



IPM 8001  
Sustained, resonant low tones and sparkling higher harmonics transport listeners into deep relaxation.

## SERENITY SUITE



IPM 7862  
The sounds of nature (songbirds, lake and mountain stream) amplify the nurturing effects of the music.

## STEVEN HALPERN'S Sound Health™ series belongs in your library:

- ◆ Proven to evoke the “relaxation response” and reduce stress for over 95% of listeners
- ◆ Provides “stress relief. . . at the speed of sound”™
- ◆ Supports feelings of peace, joy and well-being
- ◆ Recommended by Dr. Barbara Crowe, Dr. Charles Eagle, Dr. Helen Bonny; many more



STEVEN HALPERN is an internationally-acclaimed recording artist, author, and sound healer. As an educator, he has taught theory and practice of sound healing and improvisation since 1970. He has sold over 4 million albums and produced 60 recordings which are used in homes, hospitals, hospices, schools, and business offices around the world.

Halpern was a featured speaker at the Sixth International Conference on Stress in Switzerland, the American Massage Therapy Association (2000) and the International Science and Consciousness conferences (1999, 2000 and 2001). He is currently conducting landmark biofeedback research, comparing classical and contemporary compositions for their healing potential.

If you're a music therapist, STEVEN HALPERN'S INNER PEACE MUSIC® belongs in your healing sound library. We look forward to working with you.

## Professional Courtesy Discount: Buy 3–Get 1 FREE!

We also offer wholesale terms for resale to hospitals, clinics, schools and therapists

Order today ◆ 1-800-909-0707 (Dep't. MUS) ◆ CDs = \$15.98 each + S&H

Hear audio samples: [www.innerpeacemusic.com](http://www.innerpeacemusic.com)



AMTA Music Therapy 8 / 27 / 02 V. 3 / PM 7 / B&W / Neg RRED / 133 line / Goudy, Futura



UNIVERSITY OF MISSOURI-  
KANSAS CITY

## UMKC Conservatory of Music

### MUSIC THERAPY PROGRAMS



**Dr. Robert Groene,**  
Ph.D., MT-BC  
Associate Professor  
of Music Therapy  
groener@umkc.edu

The UMKC Interdisciplinary Ph.D. Program (IPHD) allows music therapy doctoral candidates to transcend traditional disciplinary boundaries in student-centered study and research in two or more areas to help address the needs of an ever-changing global community.

The Master of Arts in Music Therapy degree allows returning music therapists' specialization areas tailored to their needs. The Graduate Equivalency Program allows undergraduate students music therapy training while earning an advanced degree.



**Dr. Sheri Robb,**  
Ph.D., MT-BC  
Assistant Professor  
of Music Therapy  
robbsh@umkc.edu

Our undergraduate program includes working with a wide diversity of clients and therapists in the greater metropolitan area.

### AUDITION DATES AT THE CONSERVATORY:

Saturday, February 8, 2003  
Monday, February 17, 2003  
Saturday, March 1, 2003

Conservatory auditions are scheduled  
30 days in advance of each date.

For admission and audition information  
contact: Conservatory Admissions

### PERFORMING ARTS IN THE CITY

University of Missouri-Kansas City  
Conservatory of Music  
4949 Cherry St.  
Kansas City, MO 64110-2229

(816) 235-2900  
cadmissions@umkc.edu  
www.umkc.edu/conservatory

Relay Missouri: 1-800-735-2966 (TT) or  
1-800-735-2466 (voice)



UMKC is an equal opportunity institution.



# VOICES

A World Forum for Music Therapy

Published by Sogn og Fjordane College in affiliation with Nordic Journal of Music Therapy and in collaboration with World Federation of Music Therapy

INFO FORTNIGHTLY COLUMNS COUNTRY OF THE MONTH MAIN ISSUES DISCUSSIONS SPONSORS

*Voices* is an online community and publication forum with free access. Our vision is to support the development of music therapy around the world, and *Voices* will encourage participation from every continent. Because culture has an important role in music and music therapy, we will also encourage contributions that clarify their relationships to pertinent traditions and cultural contexts.

Feel free to explore our four main sections:

- Fortnightly Columns** – musings and reflections interweaving personal and public narratives
- Country of the Month** – a series of presentations with links, pictures, audio- and video-clips
- Main Issues** – a first class online international journal stressing dialogic styles of writing
- Discussions** – debates and dialogues contributing to the interactive quality of *Voices*.

### The Editorial Board:

Editors in chief: Carolyn Kenny (Canada/USA) & Brynjulf Stige (Norway)

African Editor: Mercédès Pavlicevic (South-Africa)

Asian Editor: Rika Ikuno (Japan)

European Editor: Dorit Amir (Israel)

North-American Editor: Michele Forinash (USA)

Australasian Editor: Denise Grocke (Australia)

South-American Editor: Lia Rejane Barcellos (Brazil)

Discussion Editors: Barbara Wheeler (USA) & Thomas Wosch (Germany)

Country of the Month Editors: Jane Edwards (Australia/Ireland) & Diego Schapira (Argentina).

[www.voices.no](http://www.voices.no)

## LESLEY UNIVERSITY

### Expressive Therapies Programs

Transform your talents for art and working with people into professional skills. The Expressive Therapies Program will prepare you to become a therapist who integrates art, dance, music, psychodrama, storytelling, and poetry with the practice of psychotherapy.

These programs emphasize the connection between the arts, teaching, and clinical training. They have been designed to meet the educational guidelines of the American Art Therapy Association, the American Music Therapy Association, the American Dance Therapy Association and the International Expressive Arts Therapies Association.

#### Master of Arts in Expressive Therapies Specializations in

Art Therapy

Dance Therapy

Expressive Therapy

Music Therapy

Mental Health Counseling

(Eligible for Licensed Mental Health Counselor)

Certificate of Advanced Graduate Study

Ph.D. in Expressive Therapies

For more information:  
(800) 999-1959 ext. 8300  
[info@lesley.edu](mailto:info@lesley.edu)  
[www.lesley.edu](http://www.lesley.edu)



LESLEY  
UNIVERSITY

# MUSIC THERAPY

School of the Arts  
Department of Music

## ONE OF THE FOREMOST TRAINING PROGRAMS IN THE COUNTRY

Celebrating 35 years of excellence in training music therapists

- ◆ Undergraduate, certification and graduate programs
- ◆ Closely supervised clinical work each semester
- ◆ Music Therapy Training Groups
- ◆ Frequent presentations and workshops by guest clinicians (from the U.S. and other countries)
- ◆ The only competitively priced undergraduate and graduate program in the tri-state Metropolitan NYC area.
- ◆ For further information, visit our web site, call 973-655-5268 or contact Prof. Karen Goodman at [goodmank@mail.montclair.edu](mailto:goodmank@mail.montclair.edu) or Joke Bradt at [bradtj@mail.montclair.edu](mailto:bradtj@mail.montclair.edu)

[www.montclair.edu/music](http://www.montclair.edu/music)



MONTCLAIR  
STATE  
UNIVERSITY



Join over 3700 music therapists who proudly possess  
the highly regarded credential available to professional music therapists

MT-BC

Music Therapist-Board Certified

*The MT-BC credential is currently used and/or required within facilities in 38 states,  
representing over 75% of the United States.*

The Certification Board for Music Therapists, Inc. is a member of the National Organization for Competency Assurance. CBMT is one of only 45 organizations accredited by The National Commission for Certifying Agencies. CBMT was granted initial accreditation in 1986, and has been reaccredited every five years since then, most recently in 2001.

Contact CBMT to receive a complimentary *Candidate Handbook* that outlines all examination application and registration policies.

*The Self-Assessment Examination (SAE)*, a tool to identify strengths and weaknesses of the certification candidate in exam readiness, is available for purchase from CBMT.

Visit Booth #58 and #59 in the Exhibit Hall to have questions answered regarding CBMT's certification and recertification programs.

CBMT, 506 East Lancaster Avenue, Suite 102, Downingtown, PA 19335  
1-800-765-CBMT (2268) [www.cbmt.org](http://www.cbmt.org) [info@cbmt.org](mailto:info@cbmt.org)

## ***What do you say when the music stops?***

- *Would you like more training in verbal processing skills?*
- *Would you like more training in group dynamics and group therapy facilitation?*
- *Are you interested in improving your skills in listening to clients?*
- *Would you like to integrate imagery techniques into your music making or improv groups with children and adults?*

### **A NEW ONE YEAR TRAINING IN MUSIC AND IMAGERY LEADING TO THE INTERNSHIP IN THE BONNY METHOD OF GUIDED IMAGERY AND MUSIC WITH FRAN GOLDBERG AND LISA SUMMER**

*This training is for therapists and other professionals who wish to use basic music and imagery methods with individuals and groups in clinical, educational, and other professional settings. In addition it serves as a prerequisite for the GIM Internship.*

Seminars focus on the use of music and imagery along with active music making, art work and writing. Seminars include:

- *Personal Journey through Music and Imagery (GIM Level I- 5 Days)  
California, February 18 - 23, 2003  
Chicago, Winter/Spring, 2003*
- *Connecting with the Inner World (8 Days) ~ August, 2003*
- *Reflections and Connections (6 Days) ~ Winter/Spring, 2004*

**CONTACT US FOR MORE INFORMATION!**

#### ***Therapeutic Arts Institute***

155 Beucon Street, San Francisco, CA 94131 ~ (415) 337-6130 ~ fgoldb1071@aolcom



**UNIVERSITY OF THE  
INCARNATE WORD**

**THE UNIVERSE IS YOURS**

## **Bachelor of Music in Music Therapy Master of Arts in Multidisciplinary Studies of Music Therapy**

*The only Music Therapy Program  
in South Texas*

For More Information, contact  
Janice Dvorkin, Psy.D. ACMT®  
(210) 829-3856  
dvorkin@universe.uiwtx.edu

University of the Incarnate Word



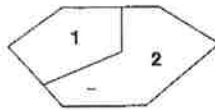
# NOTES

---

# HOTEL MAPS

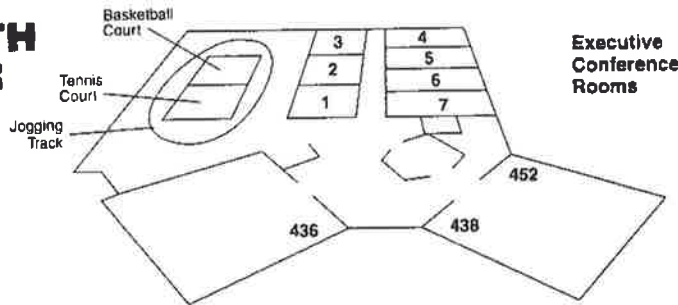
## ROOFTOP

(Take express scenic elevators from Main Lobby)



- 1 Nikolai's Roof
- 2 Point of View

## FOURTH FLOOR

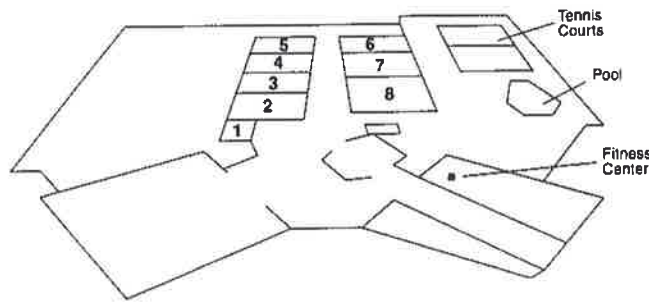


**Executive Conference Rooms**

- 1 Board Room
- 2 Directors Room
- 3 Embassy Room
- 4 Cabinet Room
- 5 Council Room
- 6 Club Room
- 7 State Room

## THIRD FLOOR

Presidential Court

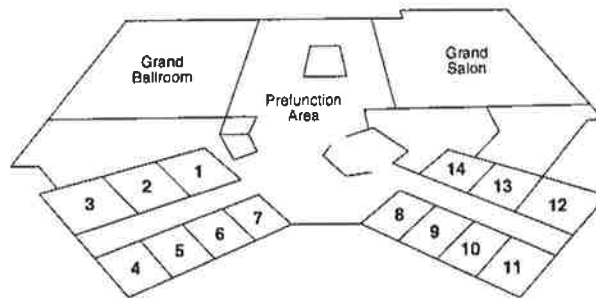


- 1 Carter
- 2 Jackson
- 3 Madison
- 4 Monroe
- 5 Roosevelt

- 6 Jefferson
- 7 Washington
- 8 Adams

## SECOND FLOOR

Northern Court Meeting Rooms



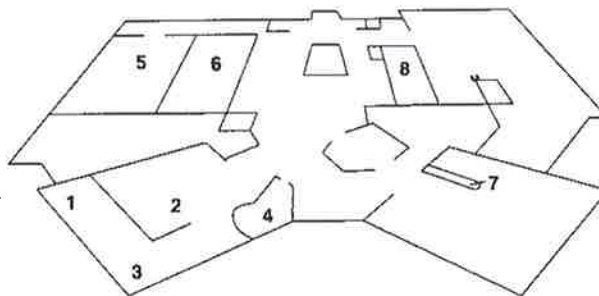
- 1 Fulton
- 2 Cobb
- 3 Clayton
- 4 Gwinnett
- 5 DeKalb
- 6 Paulding
- 7 Douglas

Southern Court Meeting Rooms

- 8 Fayette
- 9 Newton
- 10 Rockdale
- 11 Forsyth
- 12 Henry
- 13 Cherokee
- 14 Walton

## LOBBY

- 1 Le Cafe
- 2 Cafe Express
- 3 Garden Terrace
- 4 Garden Terrace Bar



- 5 Crystal Ballrooms
- 6 Casablanca
- 7 Convention Registration
- 8 Hotel Check-in

## LOWER LEVEL

Hilton Exhibit Center  
Trader Vic's Restaurant and Lounge

# 2003 AMTA Conference

## Music Therapy: The Key to Health and Wellness

---

November 19 - 23, 2003

Minneapolis, Minnesota

---

**Call for Papers Deadline: Friday March 14, 2003**

Check upcoming newsletters  
and the AMTA website  
for details as they become available.